



PRODUCED BY
CITY OF FORT WAYNE
G.I.S. DEPARTMENT

LEGEND

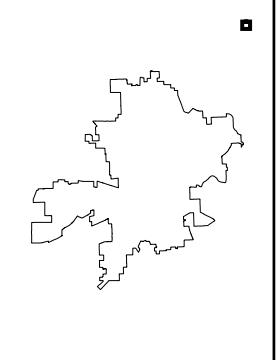
- FIRE HYDRANT
- MAIN LINE VALVE
- BUTTERFLY VALVE
- BLOWOFF VALVE
- CHECK VALVE
- VALVE PIT
- WATER JUNCTION
- REDUCER
- CUT PLUG
- WATER TANK
- WATER MAIN
- PRIVATE MAIN
- ABANDONED MAIN
- EASEMENTS

- R22 1765 HYDRANT ID
- R22 0026 VALVE ID
- R22 0026 JUNCTION ID
- R22 0026 REDUCER ID

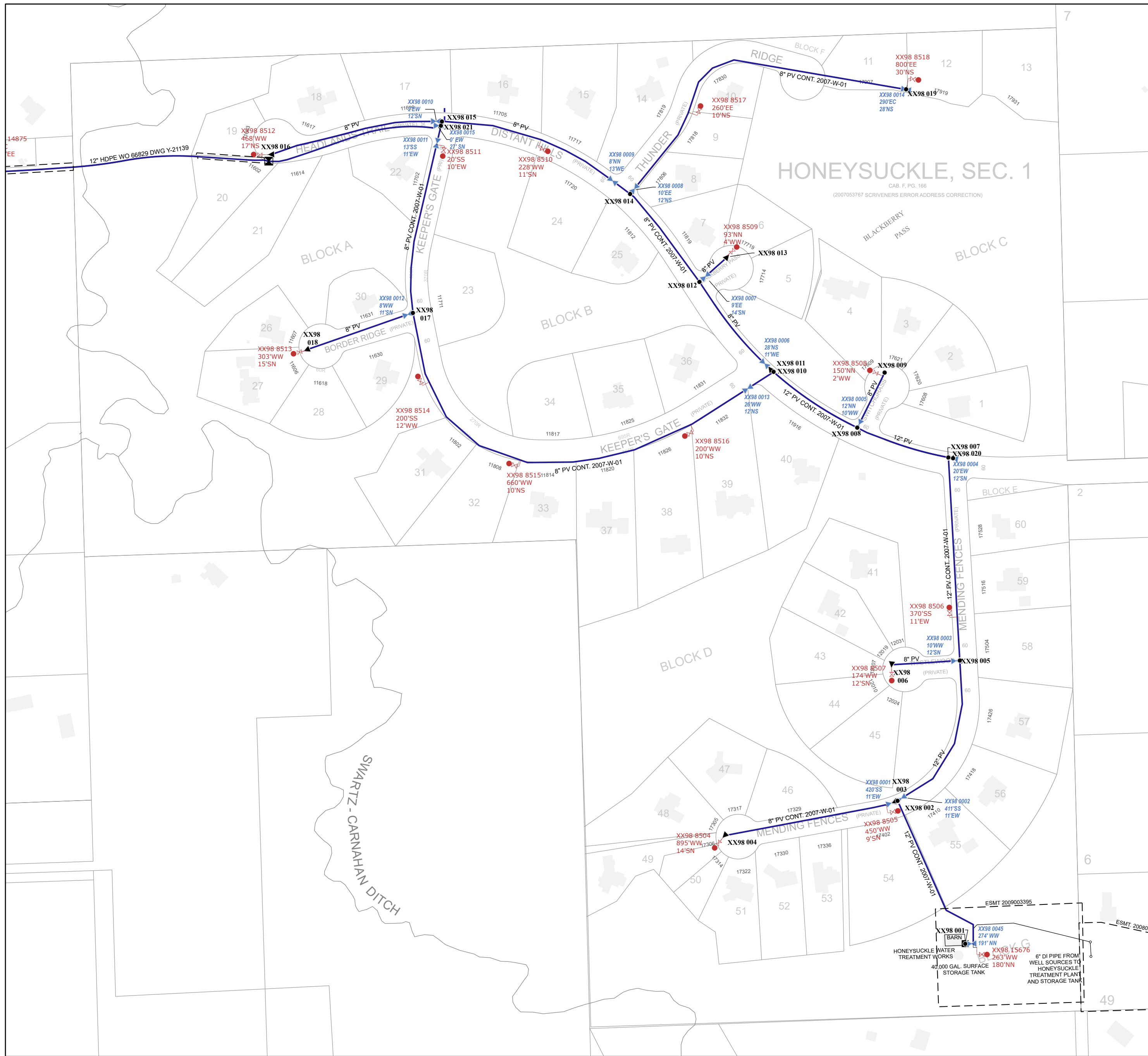
NOTICE: THE INFORMATION DEPICTED ON THIS MAP CONCERNING LOCATION, TYPE, SIZE AND MATERIAL OF UNDERGROUND UTILITIES IS NOT GUARANTEED TO BE ACCURATE OR ALL INCLUSIVE. INFORMATION SHOWN WAS OBTAINED FROM AVAILABLE RECORDS. FIELD INVESTIGATION SHOULD BE CONDUCTED TO DETERMINE ACCURACY.

CITY OF FORT WAYNE
CITY UTILITIES
 CITIZENS SQUARE
 200 E. BERRY STREET
 FORT WAYNE, IN 46802

NW 1/4 SEC. 11
 TOWNSHIP 32 N, RANGE 13 E
 CEDAR CR. TWP, ALLEN CO.
 MAP SCALE : 1" = 200'



MAP NO.
XX98
 6/29/2023



HONEYSUCKLE, SEC. 1
 CAB. F. PG. 166
 (2007053767 SCRIVENERS ERROR ADDRESS CORRECTION)

HONEYSUCKLE WATER TREATMENT WORKS
 40,000 GAL. SURFACE STORAGE TANK
 6" DI PIPE FROM WELL SOURCES TO HONEYSUCKLE TREATMENT PLANT AND STORAGE TANK

SWARTZ - CARNAHAN DITCH