



PRODUCED BY  
CITY OF FORT WAYNE  
G.I.S. DEPARTMENT

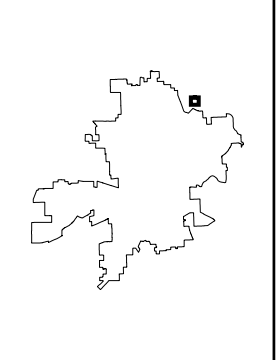
**LEGEND**

- FIRE HYDRANT
  - MAIN LINE VALVE
  - BUTTERFLY VALVE
  - BLOWOFF VALVE
  - CHECK VALVE
  - VALVE PIT
  - WATER JUNCTION
  - REDUCER
  - CUT PLUG
  - WATER TANK
  - WATER MAIN
  - PRIVATE MAIN
  - ABANDONED MAIN
  - EASEMENTS
- R22 1765 HYDRANT ID  
R22 0026 VALVE ID  
R22 0026 JUNCTION ID  
R22 0026 REDUCER ID

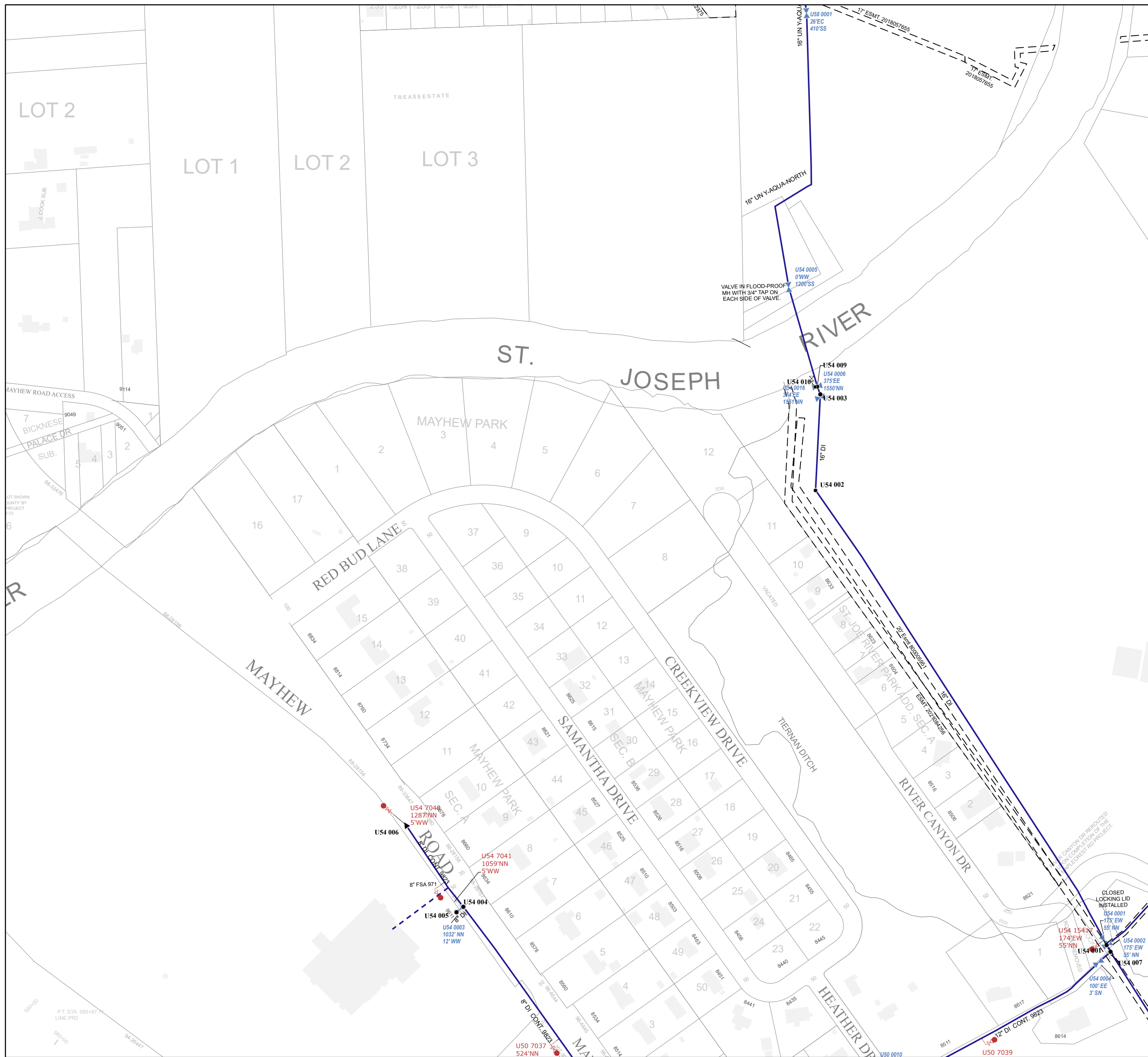
NOTICE: THE INFORMATION DEPICTED ON THIS MAP CONCERNING LOCATION, TYPE, SIZE AND MATERIAL OF UNDERGROUND UTILITIES IS NOT GUARANTEED TO BE ACCURATE OR ALL INCLUSIVE. INFORMATION SHOWN WAS OBTAINED FROM AVAILABLE RECORDS. FIELD INVESTIGATION SHOULD BE CONDUCTED TO DETERMINE ACCURACY.

**CITY OF FORT WAYNE**  
**CITY UTILITIES**  
CITIZENS SQUARE  
200 E. BERRY STREET  
FORT WAYNE, IN 46802

SE 1/4 SEC. 4  
TOWNSHIP 31 N, RANGE 13 E  
ST JOSEPH TWP, ALLEN CO.  
MAP SCALE : 1" = 200'



MAP NO.  
**U54**  
6/29/2023



P.T. STA. 589+87.1  
LINE PR2  
94-26447

U50 7037  
524' NN

U50 7039