



PRODUCED BY  
CITY OF FORT WAYNE  
G.I.S. DEPARTMENT

**LEGEND**

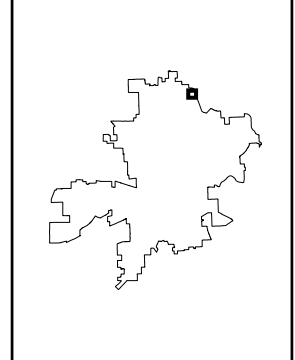
- FIRE HYDRANT
- MAIN LINE VALVE
- BUTTERFLY VALVE
- BLOWOFF VALVE
- CHECK VALVE
- VALVE PIT
- WATER JUNCTION
- REDUCER
- CUT PLUG
- WATER TANK
- WATER MAIN
- PRIVATE MAIN
- ABANDONED MAIN
- EASEMENTS

- R22 1765 HYDRANT ID
- R22 0026 VALVE ID
- R22 0026 JUNCTION ID
- R22 0026 REDUCER ID

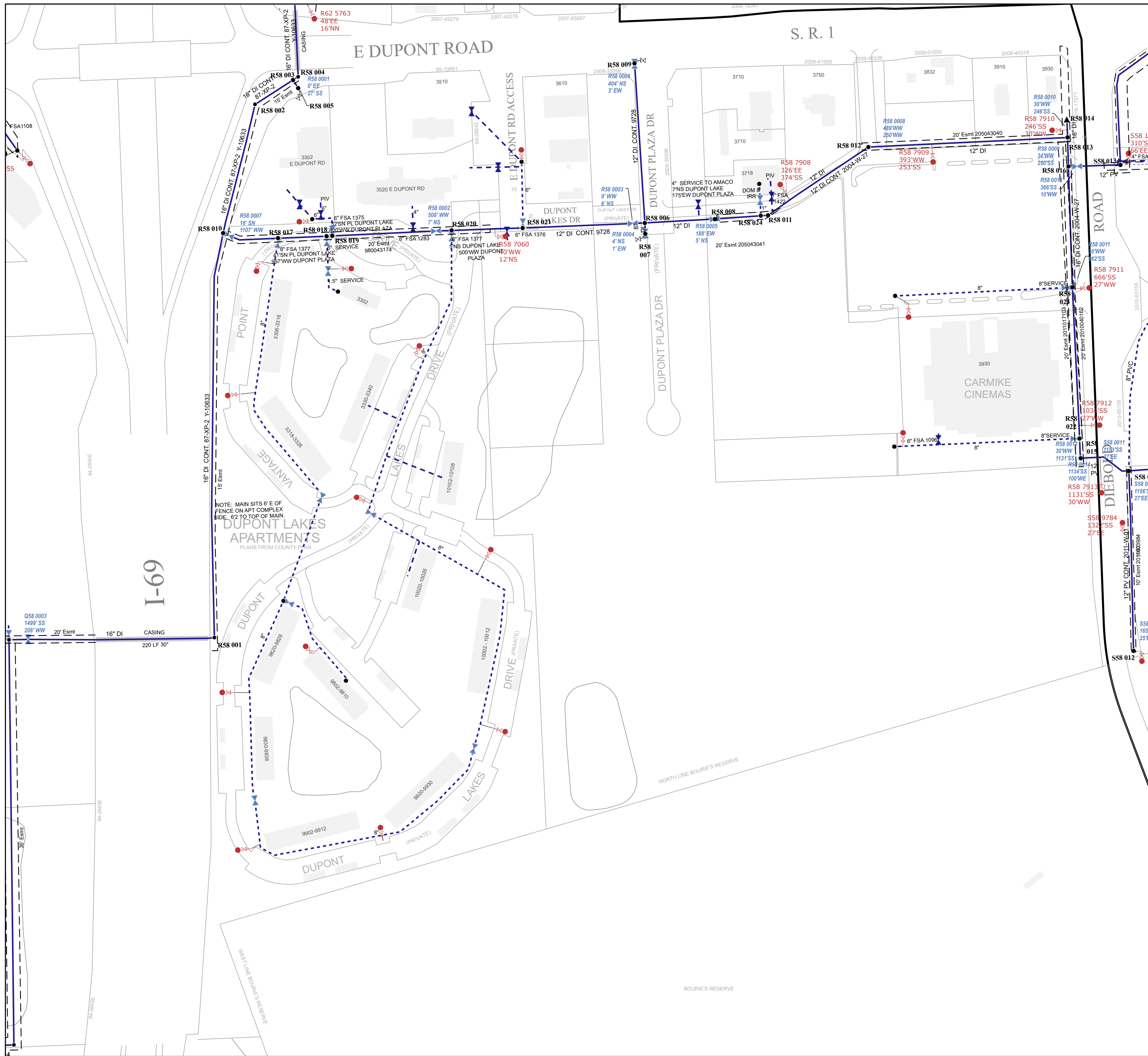
NOTICE: THE INFORMATION DEPICTED ON THIS MAP CONCERNING LOCATION, TYPE, SIZE AND MATERIAL OF UNDERGROUND UTILITIES IS NOT GUARANTEED TO BE ACCURATE OR ALL INCLUSIVE. INFORMATION SHOWN WAS OBTAINED FROM AVAILABLE RECORDS. FIELD INVESTIGATION SHOULD BE CONDUCTED TO DETERMINE ACCURACY.

**CITY OF FORT WAYNE**  
**CITY UTILITIES**  
 CITIZENS SQUARE  
 200 E. BERRY STREET  
 FORT WAYNE, IN 46802

NW 1/4 SEC. 5  
 TOWNSHIP 31 N, RANGE 13 E  
 ST JOSEPH TWP, ALLEN CO.  
 MAP SCALE : 1" = 200'



MAP NO.  
**R58**  
 6/29/2023



NOTE: MAIN SITS 6' E OF  
 FENCE ON APT COMPLEX  
 SIDE. 6'2" TO TOP OF MAIN.

DUPONT LAKES  
 APARTMENTS  
 PLANS FROM COUNTY PLAN

I-69

S. R. 1

CARMIKE  
CINEMAS

NORTH LINE BOURIE'S RESERVE

BOURIE'S RESERVE