



PRODUCED BY
CITY OF FORT WAYNE
G.I.S. DEPARTMENT

LEGEND

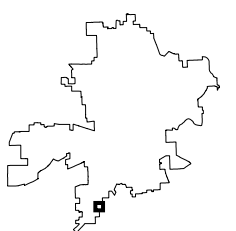
- FIRE HYDRANT
- MAIN LINE VALVE
- BUTTERFLY VALVE
- BLOWOFF VALVE
- CHECK VALVE
- VALVE PIT
- WATER JUNCTION
- REDUCER
- CUT PLUG
- WATER TANK
- WATER MAIN
- PRIVATE MAIN
- ABANDONED MAIN
- EASEMENTS

- R22 1765 HYDRANT ID
- R22 0026 VALVE ID
- R22 0026 JUNCTION ID
- R22 0026 REDUCER ID

NOTICE: THE INFORMATION DEPICTED ON THIS MAP CONCERNING LOCATION, TYPE, SIZE AND MATERIAL OF UNDERGROUND UTILITIES IS NOT GUARANTEED TO BE ACCURATE OR ALL INCLUSIVE. INFORMATION SHOWN WAS OBTAINED FROM AVAILABLE RECORDS. FIELD INVESTIGATION SHOULD BE CONDUCTED TO DETERMINE ACCURACY.

CITY OF FORT WAYNE
CITY UTILITIES
 CITIZENS SQUARE
 200 E. BERRY STREET
 FORT WAYNE, IN 46802

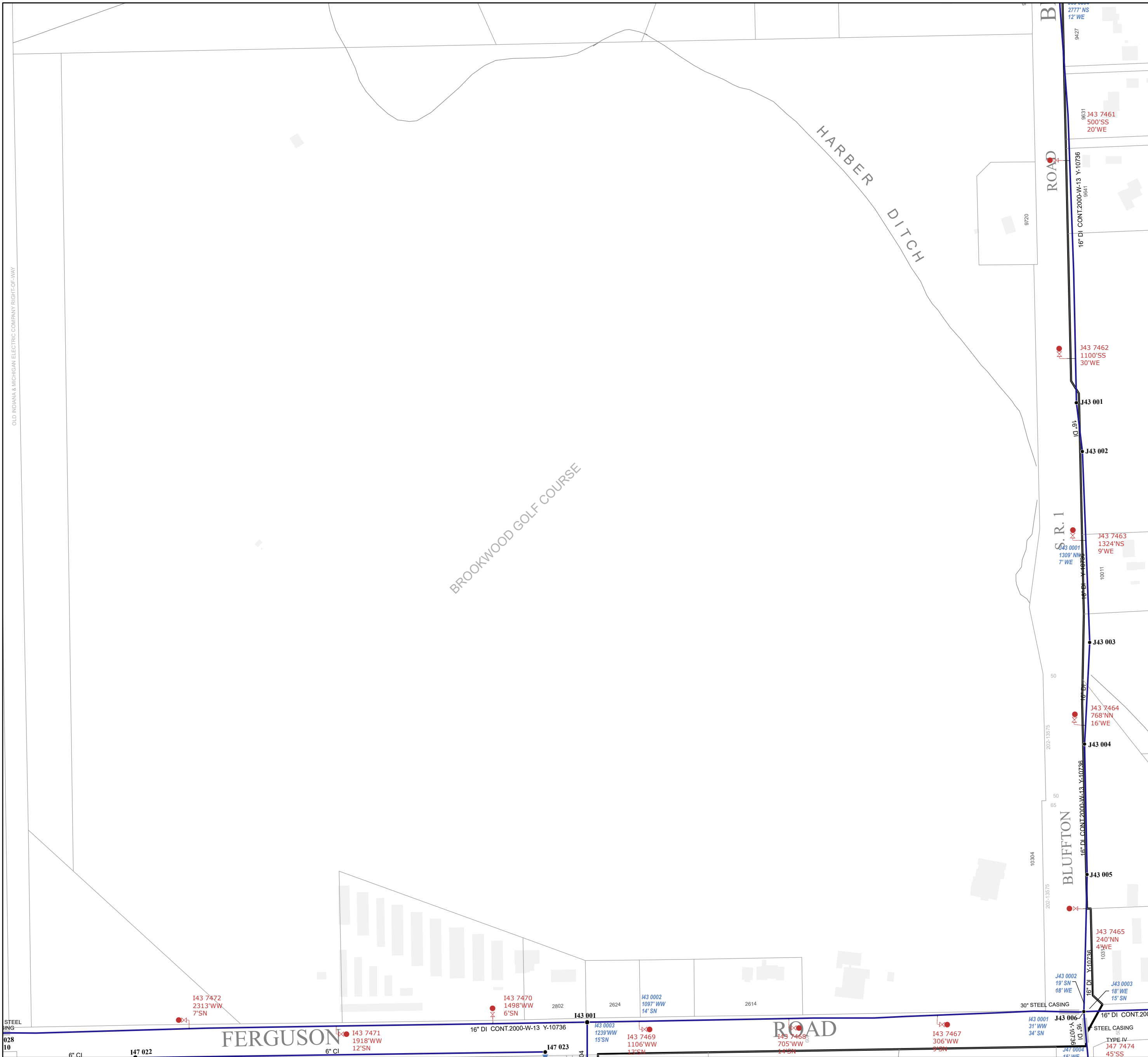
SE 1/4 SEC. 4
 TOWNSHIP 29 N, RANGE 12 E
 PLEASANT TWP, ALLEN CO.
 MAP SCALE : 1" = 200'



MAP NO.

I43

6/29/2023



OLD INDIANA & MICHIGAN ELECTRIC COMPANY RIGHT-OF-WAY

STEEL
ING
028
10

FERGUSON ROAD

BLUFFTON ROAD

HARBOR DITCH

BROOKWOOD GOLF COURSE

B
277' NS
12' WE
9427
9631
J43 7461
500'SS
20'WE
9720
16" DI CONT.2000-W-13 Y-10736
3641

S. R. 1
J43 0001
1309' NS
7' WE

BLUFFTON
10304
202-13575
65 55
16" DI CONT.2000-W-13 Y-10736
16' DI Y-10736

J43 0002
19'SN
18' WE
J43 0003
18' WE
15' SN
J43 0001
31' WW
34' SN
TYPE IV
J47 7474
45'SS

J43 7472
2313' WW
7'SN

J43 7470
1498' WW
6'SN

J43 0002
1097' WW
14' SN

J43 7467
306' WW
2'SN

J43 7465
240' NN
4' WE

J43 7464
768' NN
16' WE

J43 7463
1324' NS
9' WE

J43 7462
1100' SS
30' WE

J43 001

J43 002

J43 003

J43 004

J43 005

J47 0004
45' SN

147 022

147 023

6" CI

6" CI

6" CI

30" STEEL CASING

STEEL CASING

16" DI CONT.200

16" DI Y-10736

16" DI Y-10736

16" DI Y-10736