



PRODUCED BY  
CITY OF FORT WAYNE  
G.I.S. DEPARTMENT

**LEGEND**

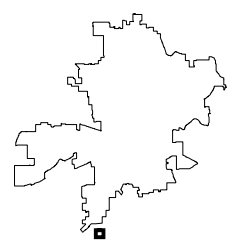
- FIRE HYDRANT
- MAIN LINE VALVE
- BUTTERFLY VALVE
- BLOWOFF VALVE
- CHECK VALVE
- VALVE PIT
- WATER JUNCTION
- REDUCER
- CUT PLUG
- WATER TANK
- WATER MAIN
- PRIVATE MAIN
- ABANDONED MAIN
- EASEMENTS

- R22 1765 HYDRANT ID
- R22 0026 VALVE ID
- R22 0026 JUNCTION ID
- R22 0026 REDUCER ID

NOTICE: THE INFORMATION DEPICTED ON THIS MAP CONCERNING LOCATION, TYPE, SIZE AND MATERIAL OF UNDERGROUND UTILITIES IS NOT GUARANTEED TO BE ACCURATE OR ALL INCLUSIVE. INFORMATION SHOWN WAS OBTAINED FROM AVAILABLE RECORDS. FIELD INVESTIGATION SHOULD BE CONDUCTED TO DETERMINE ACCURACY.

**CITY OF FORT WAYNE**  
**CITY UTILITIES**  
CITIZENS SQUARE  
200 E. BERRY STREET  
FORT WAYNE, IN 46802

SW 1/4 SEC. 16  
TOWNSHIP 29 N, RANGE 12 E  
PLEASANT TWP, ALLEN CO.  
MAP SCALE : 1" = 200'

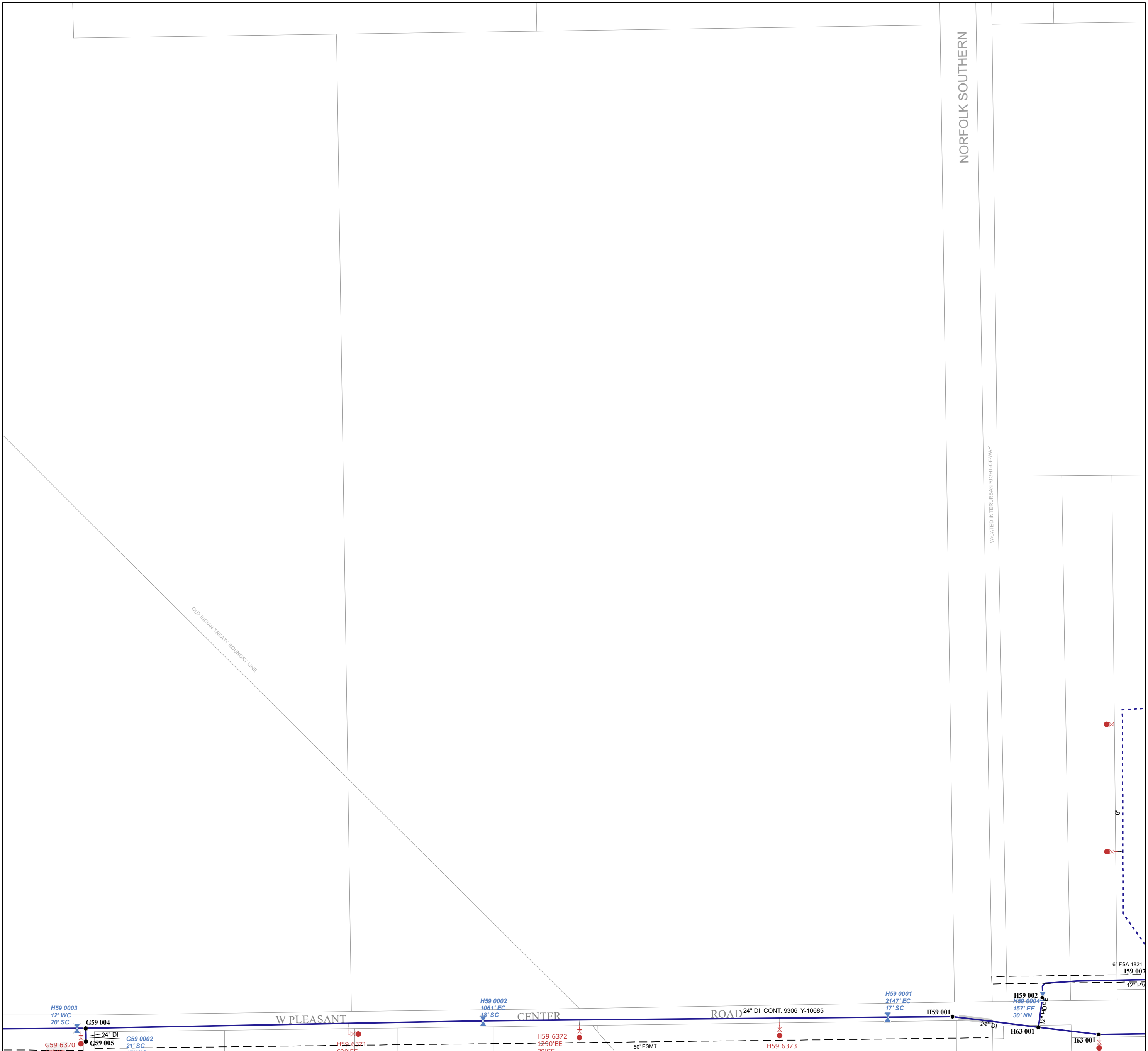


MAP NO.  
**H59**  
10/2/2023

NORFOLK SOUTHERN

VACATED INTERURBAN RIGHT-OF-WAY

OLD INDIAN TREATY BOUNDARY LINE



H59 0003  
12" WC  
20' SC

G59 004

G59 005

G59 002

W PLEASANT

CENTER

ROAD 24" DI CONT. 9306 Y-10685

H59 001

H59 002  
H59 0004  
157' EE  
30' NN

H63 001

6" FSA 1821

I59 007

12" PV

H59 0002  
1061' EC  
18' SC

H59 0001  
2147' EC  
17' SC

H59 6372

H59 6371

50' ESMT

H59 6373

6'

6'

6'

6'

6'

6'

6'

6'