



PRODUCED BY  
CITY OF FORT WAYNE  
G.I.S. DEPARTMENT

**LEGEND**

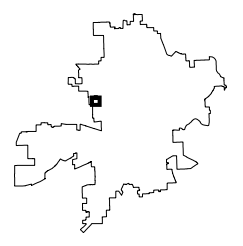
- FIRE HYDRANT
- MAIN LINE VALVE
- BUTTERFLY VALVE
- BLOWOFF VALVE
- CHECK VALVE
- VALVE PIT
- WATER JUNCTION
- REDUCER
- CUT PLUG
- WATER TANK
- WATER MAIN
- PRIVATE MAIN
- ABANDONED MAIN
- EASEMENTS

- R22 1765 HYDRANT ID
- R22 0026 VALVE ID
- R22 0026 JUNCTION ID
- R22 0026 REDUCER ID

NOTICE: THE INFORMATION DEPICTED ON THIS MAP CONCERNING LOCATION, TYPE, SIZE AND MATERIAL OF UNDERGROUND UTILITIES IS NOT GUARANTEED TO BE ACCURATE OR ALL INCLUSIVE. INFORMATION SHOWN WAS OBTAINED FROM AVAILABLE RECORDS. FIELD INVESTIGATION SHOULD BE CONDUCTED TO DETERMINE ACCURACY.

**CITY OF FORT WAYNE**  
**CITY UTILITIES**  
 CITIZENS SQUARE  
 200 E. BERRY STREET  
 FORT WAYNE, IN 46802

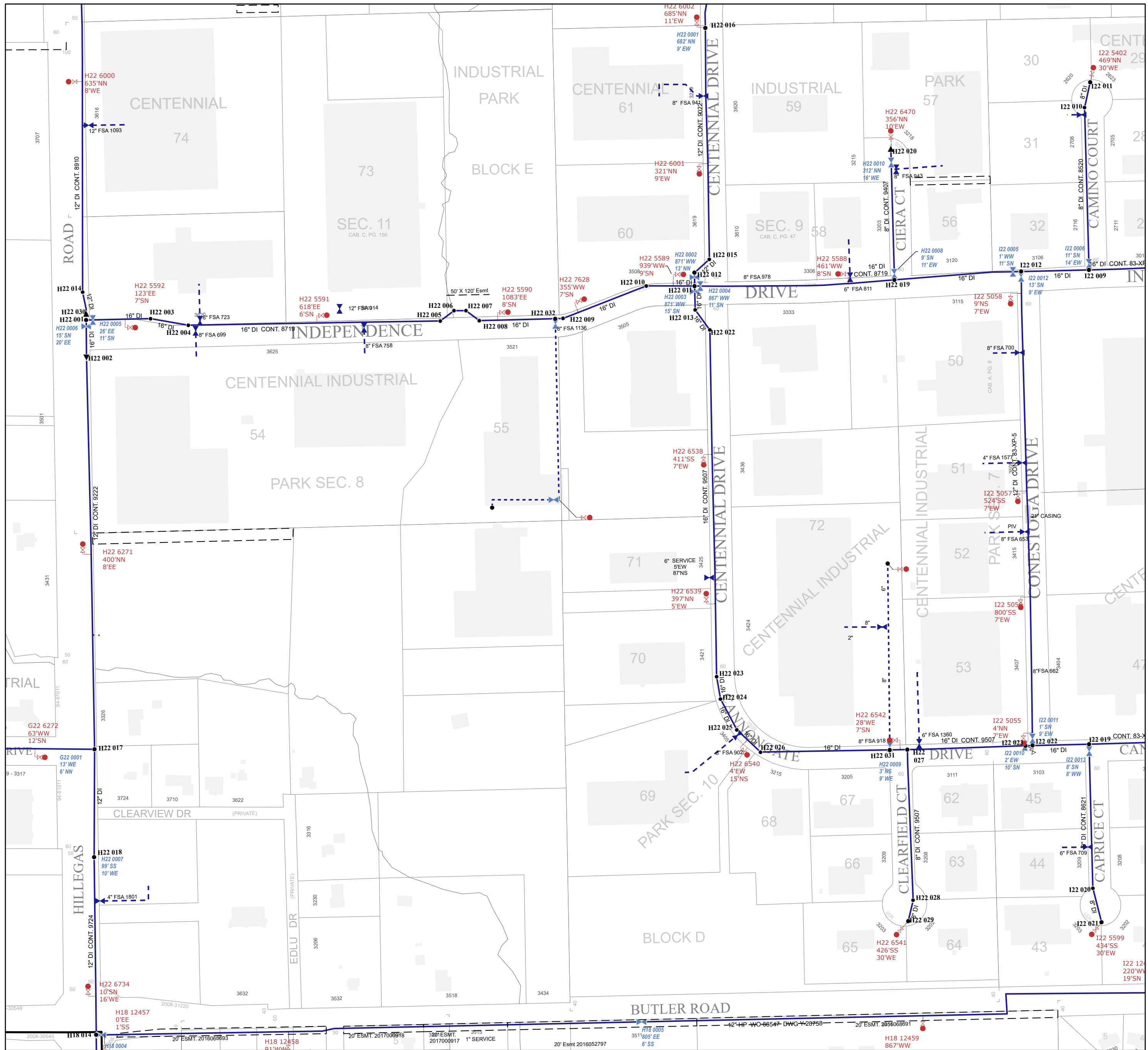
SW 1/4 SEC. 28  
 TOWNSHIP 31 N, RANGE 12 E  
 WASHINGTON TWP, ALLEN CO.  
 MAP SCALE : 1" = 200'



MAP NO.

**H22**

6/29/2023



2008-30545 H18 014 20 ESMT. 201606893 H18 12457 0'EE 1'SS 20 ESMT. 201606893 H18 12458 91'WW 20 ESMT. 2017009916 380' ESMT. 2017009916 1" SERVICE 20 ESMT. 2016052797 351' 805' EE 6' SS 42" HP - WO-66547- DWG-4-20758 20 ESMT. 201606891 H18 12459 867' WW