



PRODUCED BY  
CITY OF FORT WAYNE  
G.I.S. DEPARTMENT

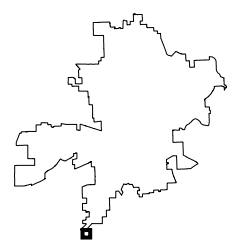
**LEGEND**

- FIRE HYDRANT
  - MAIN LINE VALVE
  - BUTTERFLY VALVE
  - BLOWOFF VALVE
  - CHECK VALVE
  - VALVE PIT
  - WATER JUNCTION
  - REDUCER
  - CUT PLUG
  - WATER TANK
  - WATER MAIN
  - PRIVATE MAIN
  - ABANDONED MAIN
  - EASEMENTS
- R22 1765 HYDRANT ID  
R22 0026 VALVE ID  
**R22 0026** JUNCTION ID  
R22 0026 REDUCER ID

NOTICE: THE INFORMATION DEPICTED ON THIS MAP CONCERNING LOCATION, TYPE, SIZE AND MATERIAL OF UNDERGROUND UTILITIES IS NOT GUARANTEED TO BE ACCURATE OR ALL INCLUSIVE. INFORMATION SHOWN WAS OBTAINED FROM AVAILABLE RECORDS. FIELD INVESTIGATION SHOULD BE CONDUCTED TO DETERMINE ACCURACY.

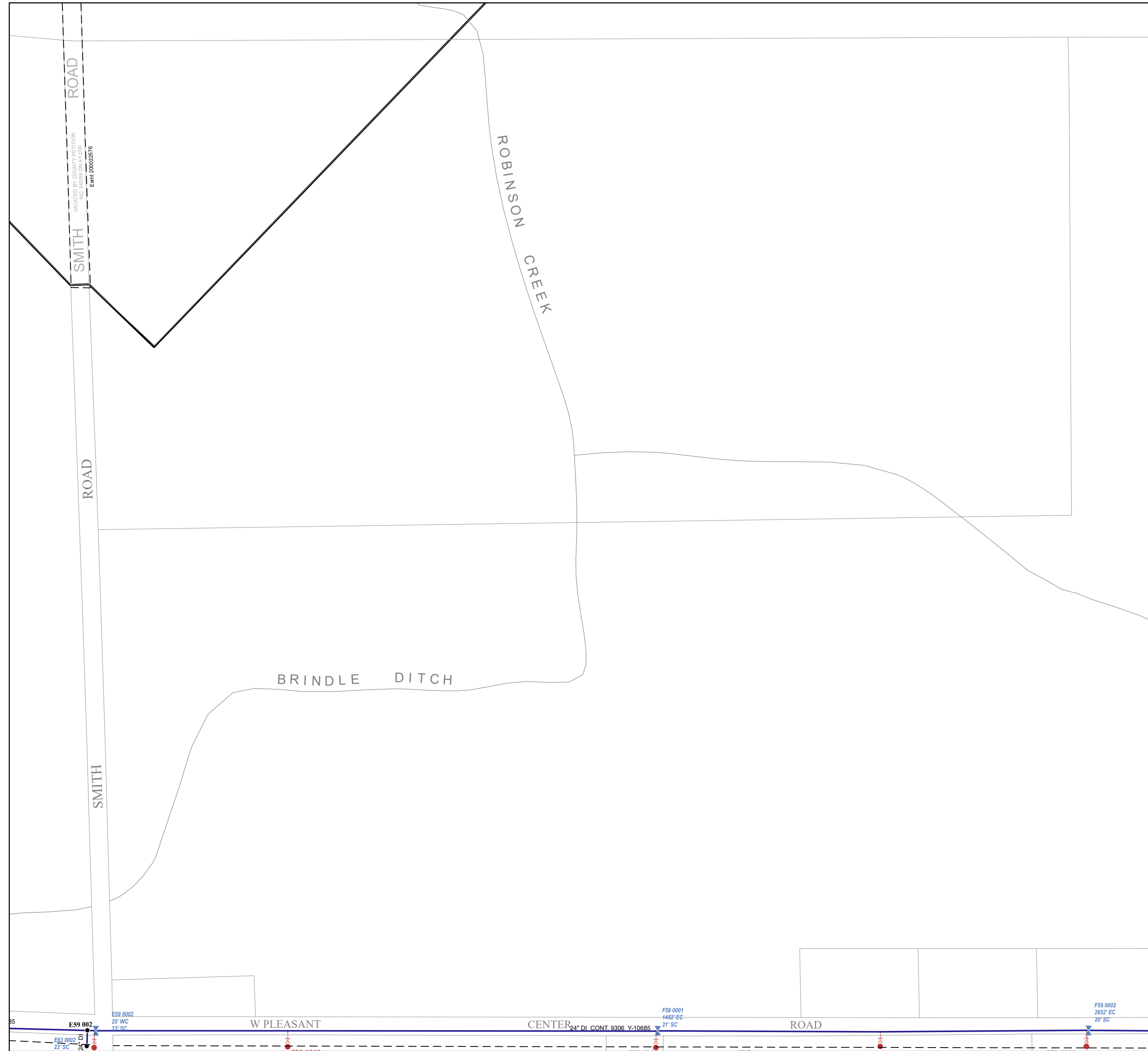
**CITY OF FORT WAYNE**  
**CITY UTILITIES**  
CITIZENS SQUARE  
200 E. BERRY STREET  
FORT WAYNE, IN 46802

SW 1/4 SEC. 17  
TOWNSHIP 29 N, RANGE 12 E  
PLEASANT TWP, ALLEN CO.  
MAP SCALE : 1" = 200'



MAP NO.  
**F59**

6/29/2023



ROAD

SMITH

ROAD

SMITH

ROBINSON  
CREEK

BRINDLE  
DITCH

W PLEASANT

CENTER

ROAD

VACATED BY COUNTY PETITION  
NO. 349289 ON 4/2/2001  
Exam 200022576

E59 0002  
25' WC  
23' SC

E59 0001  
1482' EC  
21' SC

F59 0002  
2652' EC  
20' SC

E63 0002  
22' SC

24" DI. CONT. 9306 Y-10685