



PRODUCED BY
CITY OF FORT WAYNE
G.I.S. DEPARTMENT

LEGEND

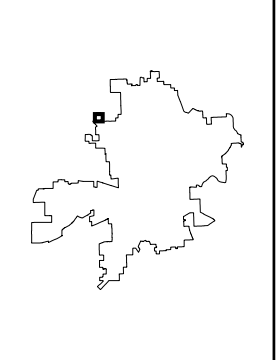
- FIRE HYDRANT
- MAIN LINE VALVE
- BUTTERFLY VALVE
- BLOWOFF VALVE
- CHECK VALVE
- VALVE PIT
- WATER JUNCTION
- REDUCER
- CUT PLUG
- WATER TANK
- WATER MAIN
- PRIVATE MAIN
- ABANDONED MAIN
- EASEMENTS

- R22 1765 HYDRANT ID
- R22 0026 VALVE ID
- R22 0026 JUNCTION ID
- R22 0026 REDUCER ID

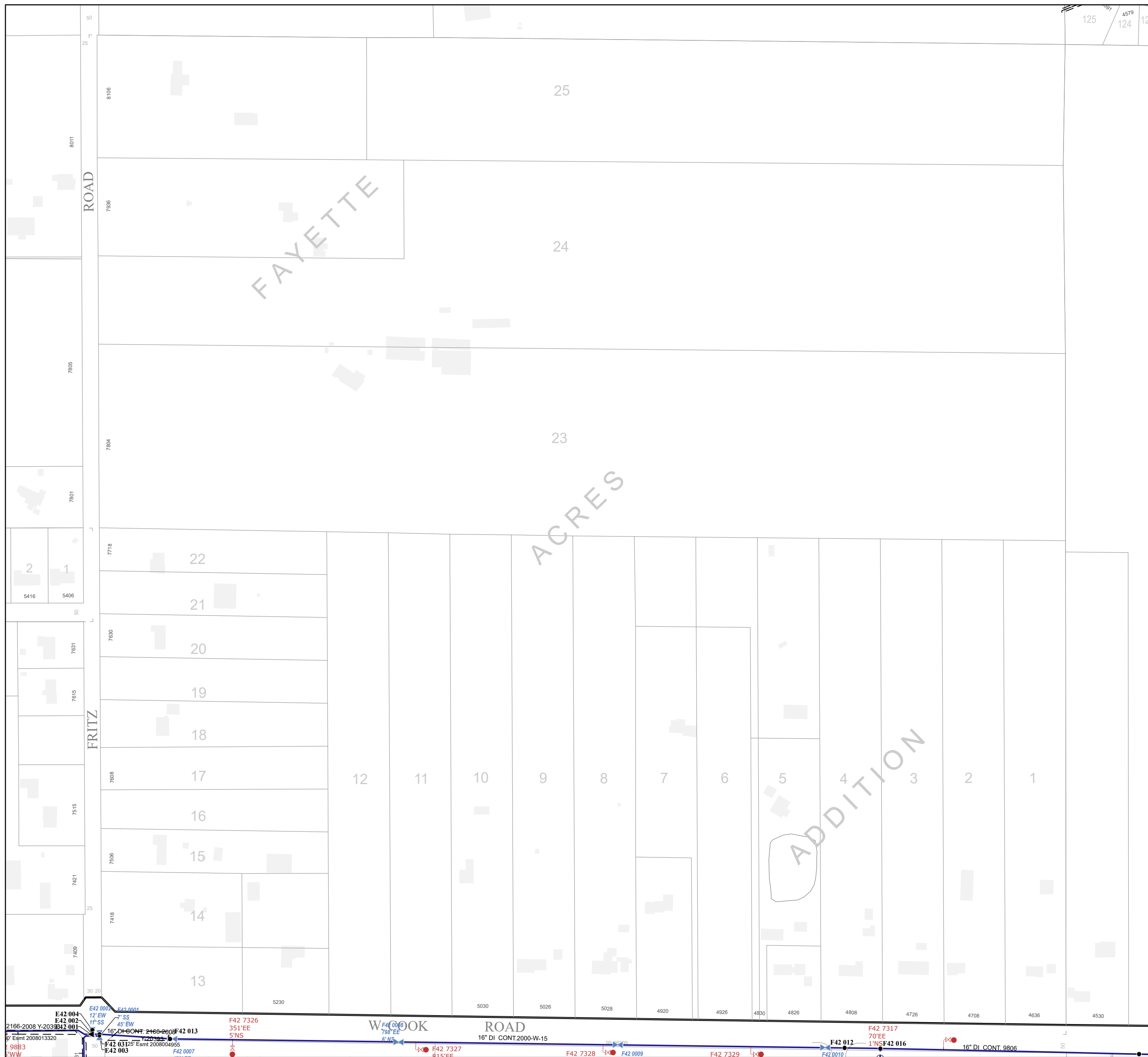
NOTICE: THE INFORMATION DEPICTED ON THIS MAP CONCERNING LOCATION, TYPE, SIZE AND MATERIAL OF UNDERGROUND UTILITIES IS NOT GUARANTEED TO BE ACCURATE OR ALL INCLUSIVE. INFORMATION SHOWN WAS OBTAINED FROM AVAILABLE RECORDS. FIELD INVESTIGATION SHOULD BE CONDUCTED TO DETERMINE ACCURACY.

CITY OF FORT WAYNE
CITY UTILITIES
 CITIZENS SQUARE
 200 E. BERRY STREET
 FORT WAYNE, IN 46802

SW 1/4 SEC. 8
 TOWNSHIP 31 N, RANGE 12 E
 WASHINGTON TWP, ALLEN CO.
 MAP SCALE : 1" = 200'



MAP NO.
F46
 6/29/2023



125 4579 124 12

ROAD

FAYETTE

ACRES

ADDITION

FRITZ

WOOD ROAD

E42 004 12' EW 7' SS
 E42 003 11' SS 45' EW
 16" DI CONT. 2466-2608 F42 013
 2166-2008 Y-2039 F42 001
 9' Esmt 2008013320
 9.98B3
 WW

F42 006 788' EE
 6' NS

F42 7326 351' EE
 5' NS

F42 7327 815' EE

F42 7328

F42 009

F42 7329

F42 012 70' EE
 1' NS F42 016

F42 010

16" DI CONT. 9806