



PRODUCED BY
CITY OF FORT WAYNE
G.I.S. DEPARTMENT

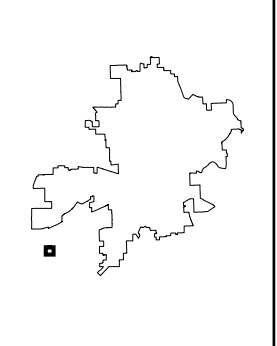
LEGEND

- FIRE HYDRANT
- MAIN LINE VALVE
- BUTTERFLY VALVE
- BLOWOFF VALVE
- CHECK VALVE
- VALVE PIT
- WATER JUNCTION
- REDUCER
- CUT PLUG
- WATER TANK
- WATER MAIN
- PRIVATE MAIN
- ABANDONED MAIN
- EASEMENTS
- R22 1765 HYDRANT ID
- R22 0026 VALVE ID
- R22 0026 JUNCTION ID
- R22 0026 REDUCER ID

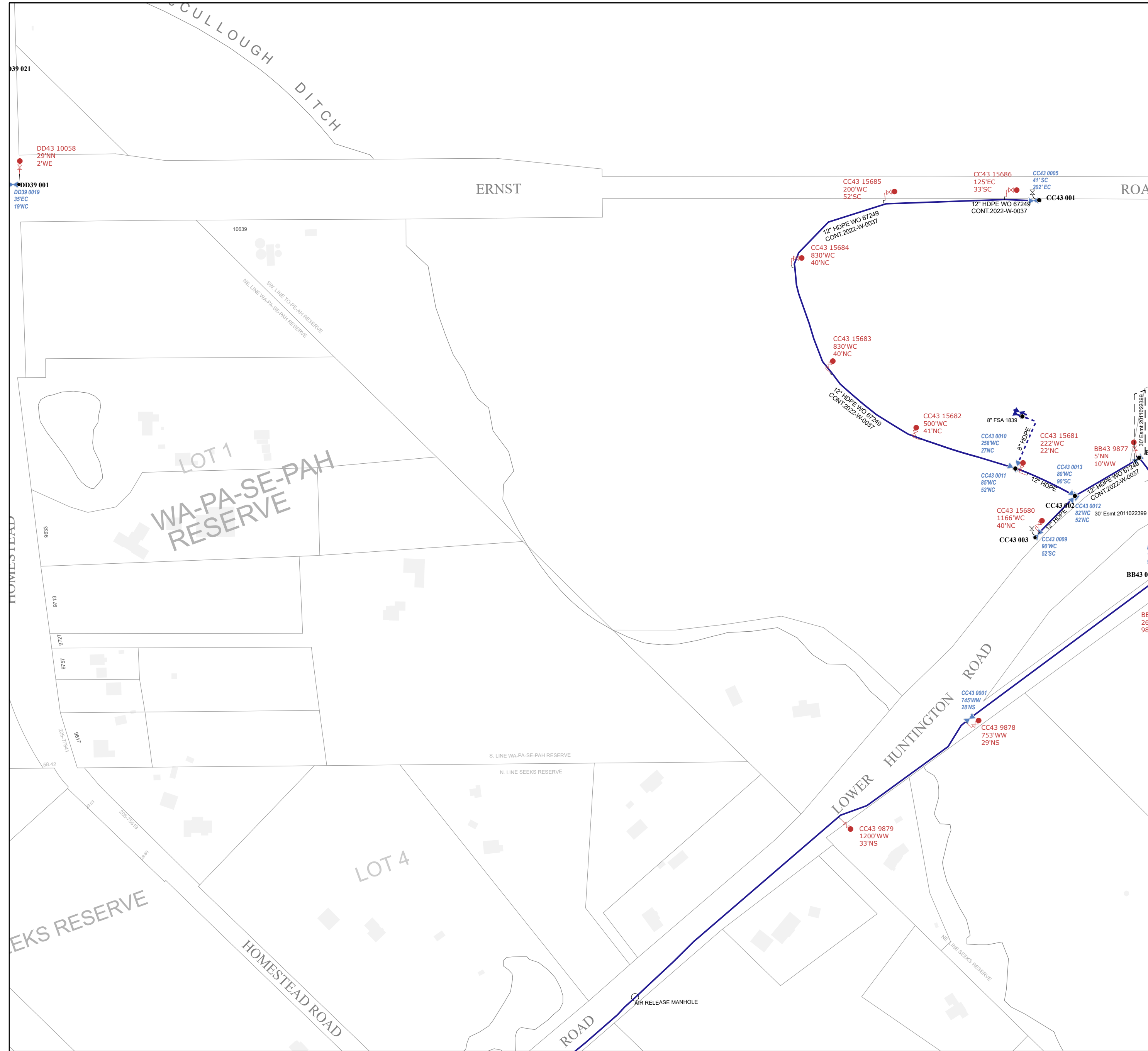
NOTICE: THE INFORMATION DEPICTED ON THIS MAP CONCERNING LOCATION, TYPE, SIZE AND MATERIAL OF UNDERGROUND UTILITIES IS NOT GUARANTEED TO BE ACCURATE OR ALL INCLUSIVE. INFORMATION SHOWN WAS OBTAINED FROM AVAILABLE RECORDS. FIELD INVESTIGATION SHOULD BE CONDUCTED TO DETERMINE ACCURACY.

CITY OF FORT WAYNE
CITY UTILITIES
CITIZENS SQUARE
200 E. BERRY STREET
FORT WAYNE, IN 46802

SW 1/4 SEC. 3
TOWNSHIP 29 N, RANGE 11 E
LAFAYETTE TWP, ALLEN CO.
MAP SCALE : 1" = 200'



MAP NO.
CC43
6/29/2023



39 021
DD39 001
DD39 0019
35'EC
19'NC
DD43 10058
29'NN
2'WE
10639
9853
9713
9727
9757
9817
58.42
205'-178'41"
205'-78'19"
200'-78'19"
200'

ERNST ROAD

HUNTINGTON ROAD

LOT 1
WA-PA-SE-PAH
RESERVE

LOT 4

RESERVE

HOMESTEAD ROAD

AIR RELEASE MANHOLE

CC43 15685
200'WC
52'SC

CC43 15684
830'WC
40'NC

CC43 15683
830'WC
40'NC

CC43 15682
500'WC
41'NC

CC43 0010
258'WC
27'NC

CC43 0011
85'WC
52'NC

CC43 15680
1166'WC
40'NC

CC43 0003

CC43 0009
90'WC
52'SC

CC43 0001
745'WW
28'NS

CC43 9878
753'WW
29'NS

CC43 9879
1200'WW
33'NS

CC43 15686
125'EC
33'SC

CC43 0005
41'SC
202'EC

CC43 0001

12" HDPE WO 67249
CONT.2022-W-0037

12" HDPE WO 67249
CONT.2022-W-0037

12" HDPE WO 67249
CONT.2022-W-0037

8" FSA 1839

CC43 15681
222'WC
22'NC

CC43 0013
80'WC
90'SC

CC43 0012
82'WC
52'NC

CC43 0012
82'WC
52'NC

30' Esmt 2011022399

BB43 9877
5'NN
10'WW

BB43 0001

BB43 0001

BB43 0001

BB43 0001

BB43 0001

BB43 0001

BB43 0001

BB43 0001

BB43 0001

BB43 0001

BB43 0001

BB43 0001

BB43 0001