

N COUNTY LINE ROAD E

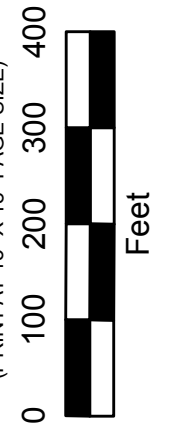


PRODUCED BY
CITY OF FORT WAYNE
G.I.S. DEPARTMENT

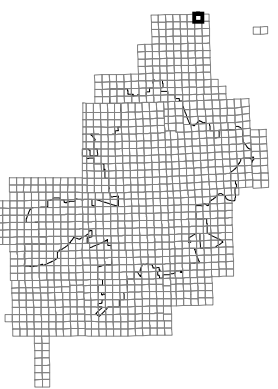
NOTICE: THE INFORMATION
DEPICTED ON THIS MAP
CONCERNING LOCATION,
TYPE, AND SIZE OF STREET
INFRASTRUCTURE IS NOT
GUARANTEED TO BE
ACCURATE OR ALL
INCLUSIVE. INFORMATION
SHOWN WAS OBTAINED
FROM AVAILABLE RECORDS.
FIELD INVESTIGATION
SHOULD BE CONDUCTED TO
DETERMINE ACCURACY.

CITY OF FORT WAYNE
STREET ENGINEERING
CITIZENS SQUARE
200 EAST BERRY STREET
FORT WAYNE, IN 46802

MAP SCALE : 1" = 200'
(PRINT AT 15" X 18" PAGE SIZE)



NW 1/4 SEC. 6
TOWNSHIP 32 N, RANGE 13 E
CEDAR CR. TWP, ALLEN CO.



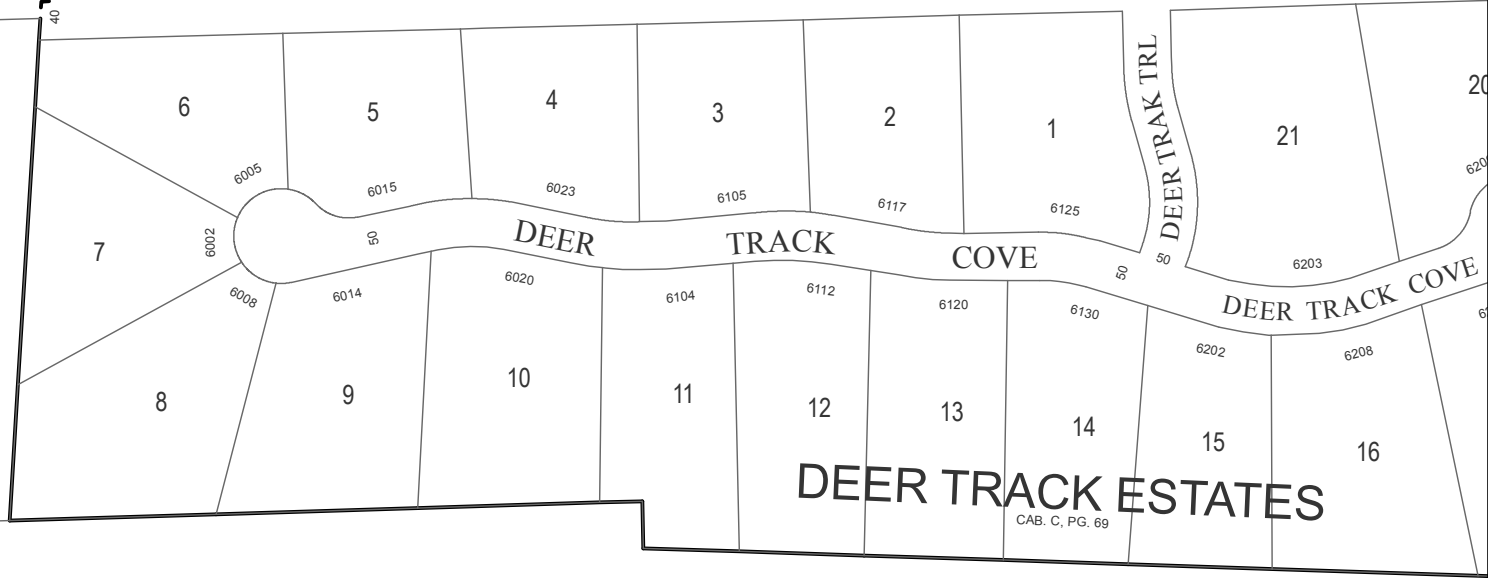
MAP NO.
U106

12/8/2015

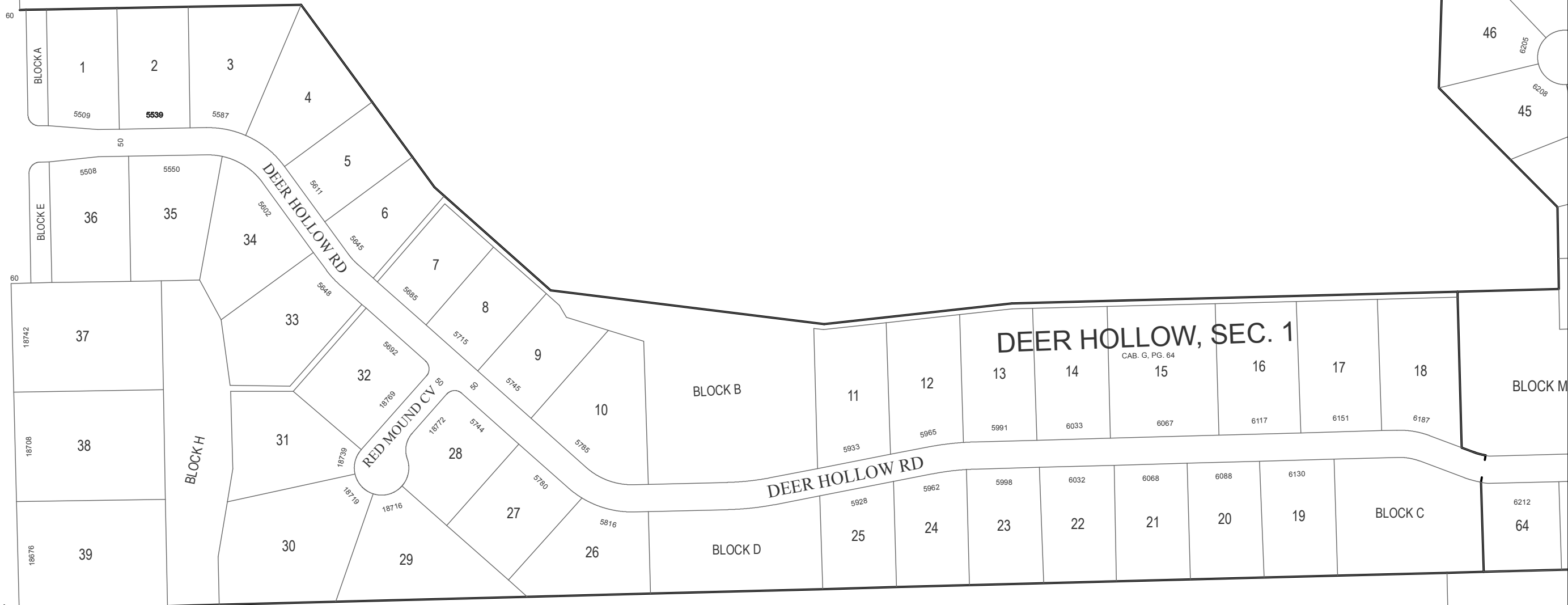
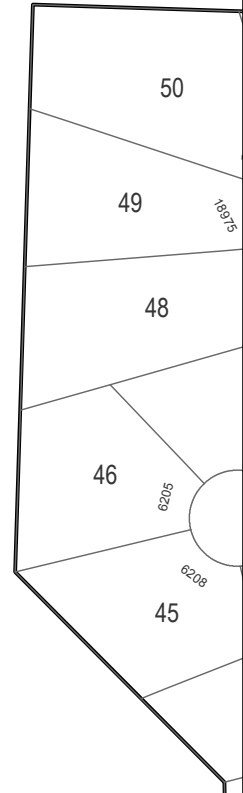
ROAD

S.R. 427

5524 5606 5628 5714



DEER TRACK ESTATES
CAB. C. PG. 69



DEER HOLLOW, SEC. 1
CAB. G. PG. 64

DEER HOLLOW RD

RED MOUND CV

DEER HOLLOW RD

BLOCK H

BLOCK B

BLOCK D

BLOCK C

BLOCK M

BLOCK A

BLOCK E