



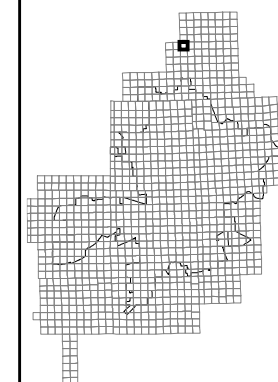
PRODUCED BY
CITY OF FORT WAYNE
G.I.S. DEPARTMENT

NOTICE: THE INFORMATION
DEPICTED ON THIS MAP
CONCERNING LOCATION,
TYPE, AND SIZE OF STREET
INFRASTRUCTURE IS NOT
GUARANTEED TO BE
ACCURATE OR ALL
INCLUSIVE. INFORMATION
SHOWN WAS OBTAINED
FROM AVAILABLE RECORDS.
FIELD INVESTIGATION
SHOULD BE CONDUCTED TO
DETERMINE ACCURACY.

CITY OF FORT WAYNE
STREET ENGINEERING
CITIZENS SQUARE
200 EAST BERRY STREET
FORT WAYNE, IN 46802

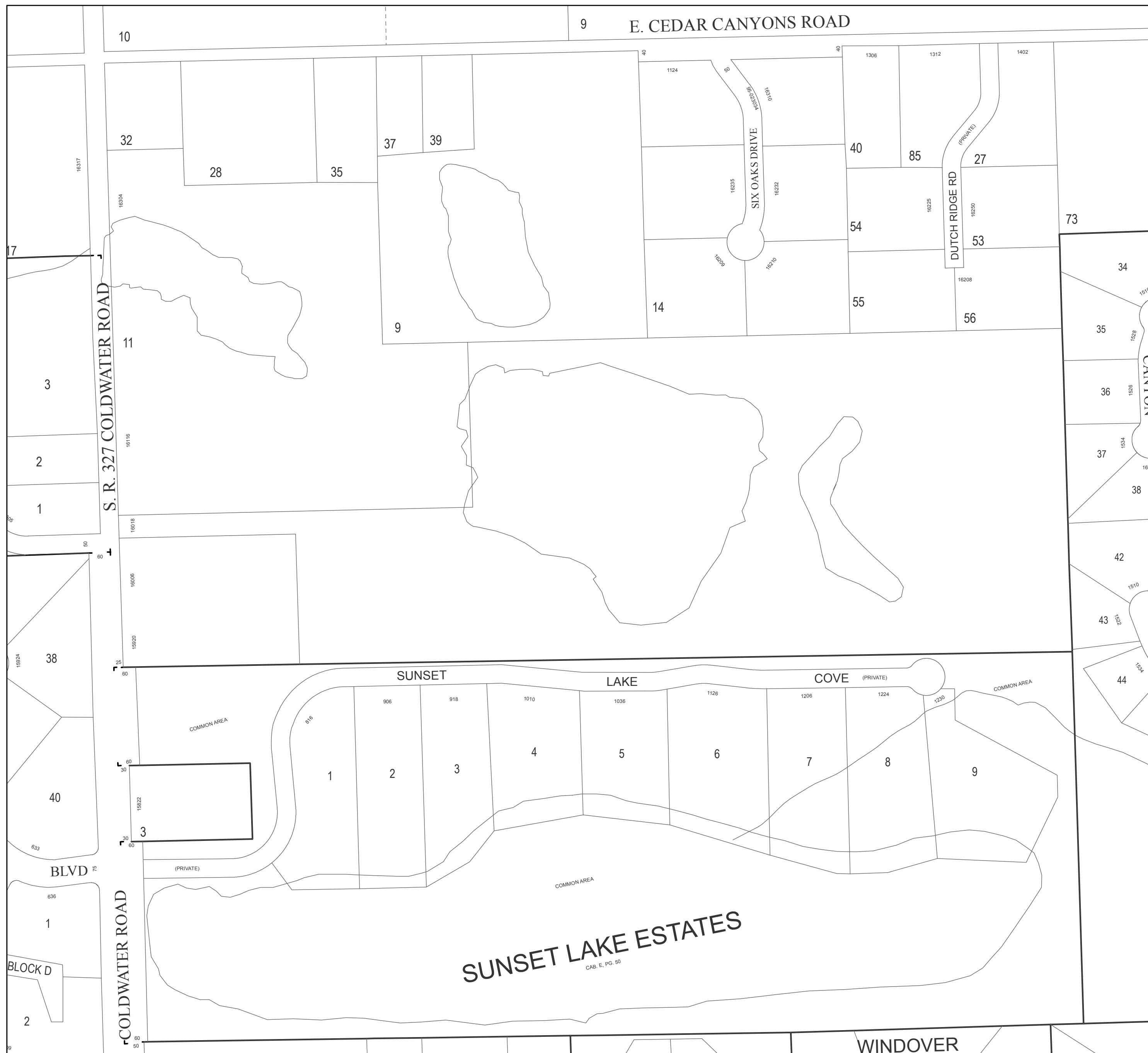
MAP SCALE : 1" = 200'
(PRINT AT 15" X 18" PAGE SIZE)
0 100 200 300 400
Feet

NW 1/4 SEC. 15
TOWNSHIP 32 N, RANGE 12 E
PERRY TWP, ALLEN CO.



MAP NO.
090

12/8/2015



E. CEDAR CANYONS ROAD

S. R. 327 COLDWATER ROAD

SIX OAKS DRIVE

DUTCH RIDGE RD

CANYON

SUNSET

LAKE

COVE (PRIVATE)

COMMON AREA

SUNSET LAKE ESTATES
CAB. E, PG. 50

WINDOVER

BLVD

COLDWATER ROAD

BLOCK D