

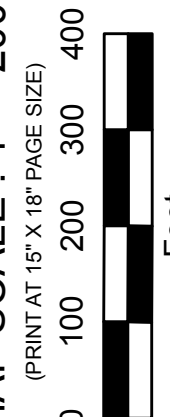


PRODUCED BY
CITY OF FORT WAYNE
G.I.S. DEPARTMENT

NOTICE: THE INFORMATION
DEPICTED ON THIS MAP
CONCERNING LOCATION,
TYPE, AND SIZE OF STREET
INFRASTRUCTURE IS NOT
GUARANTEED TO BE
ACCURATE OR ALL
INCLUSIVE. INFORMATION
SHOWN WAS OBTAINED
FROM AVAILABLE RECORDS.
FIELD INVESTIGATION
SHOULD BE CONDUCTED TO
DETERMINE ACCURACY.

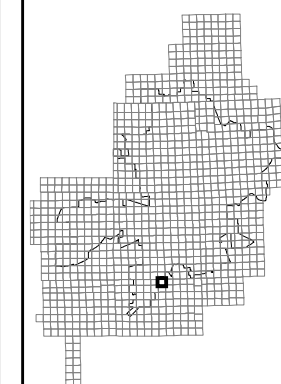
CITY OF FORT WAYNE
STREET ENGINEERING
CITIZENS SQUARE
200 EAST BERRY STREET
FORT WAYNE, IN 46802

MAP SCALE : 1" = 200'
(PRINT AT 15" X 18" PAGE SIZE)



NW 1/4 SEC. 3

TOWNSHIP 29 N, RANGE 12 E
PLEASANT TWP, ALLEN CO.



MAP NO.

J39

12/8/2015



ROAD S. R. 1

BLUFFTON

DUNKLEBERG

KREIGHS
SUBURBAN
ADDITION

VILLA

VILLA

DRIVE

PARK

RD

40' INST. 72-22272

40' INST. 72-10259

40' INST. 72-22272

8138

9512

9427

9631

9333

9307

9127

9115

9105

80

9023

9007

8903

40

G-4174

G-2795

G-2796

F-2301

G-8469

F-3415

2009

2017

G-5241

F-2300

F-2299

F-1312

F-1729

G-3271

G-9127

G-3134

F-807

G-3270

G-2545

1823

1725

1909

1921

2009

2017

2027

2111

2121

2209

2215

2223

2231

2307

2311

2317

2323

2333

1719

12

13

14

15

16

17

18

11

10

9

8

7

6

5

4

3

2

1