



PRODUCED BY CITY OF FORT WAYNE G.I.S. DEPARTMENT

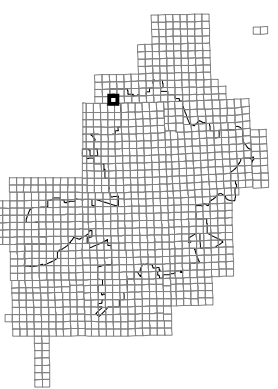
NOTICE: THE INFORMATION DEPICTED ON THIS MAP CONCERNING LOCATION, TYPE, AND SIZE OF STREET INFRASTRUCTURE IS NOT GUARANTEED TO BE ACCURATE OR ALL INCLUSIVE. INFORMATION SHOWN WAS OBTAINED FROM AVAILABLE RECORDS. FIELD INVESTIGATION SHOULD BE CONDUCTED TO DETERMINE ACCURACY.

CITY OF FORT WAYNE STREET ENGINEERING

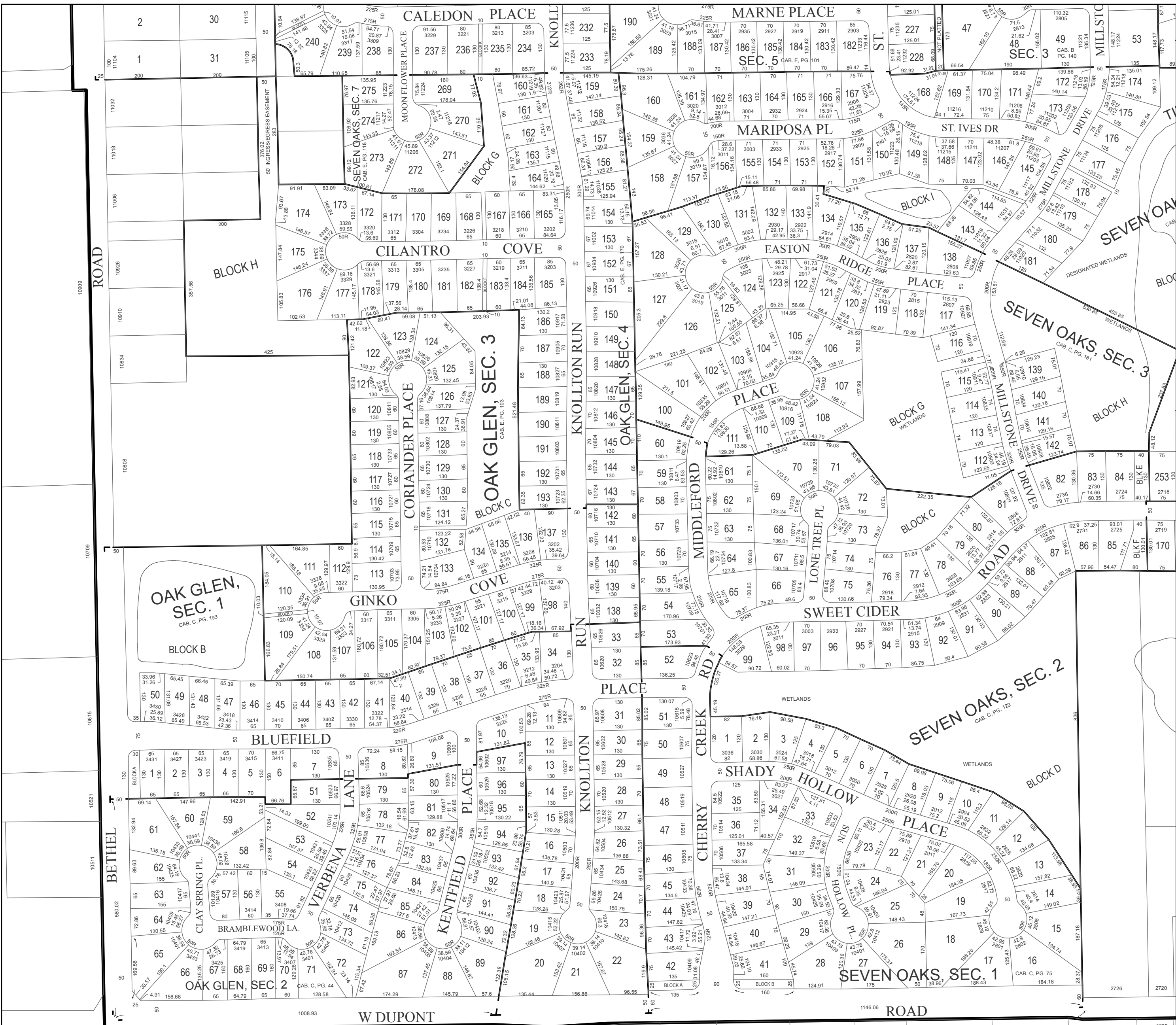
CITIZENS SQUARE 200 EAST BERRY STREET FORT WAYNE, IN 46802

MAP SCALE: 1" = 200' (PRINT AT 15" X 18" PAGE SIZE) 0 100 200 300 400 Feet

SW 1/4 SEC. 31 TOWNSHIP 32 N, RANGE 12 E PERRY TWP, ALLEN CO.



MAP NO. I62 12/8/2015



Grid of coordinates at the bottom of the map page.