

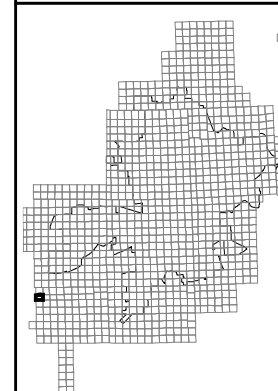
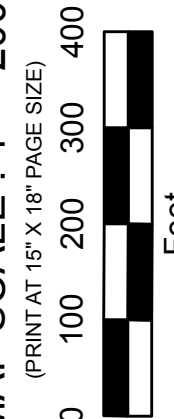


PRODUCED BY  
CITY OF FORT WAYNE  
G.I.S. DEPARTMENT

NOTICE: THE INFORMATION  
DEPICTED ON THIS MAP  
CONCERNING LOCATION,  
TYPE, AND SIZE OF STREET  
INFRASTRUCTURE IS NOT  
GUARANTEED TO BE  
ACCURATE OR ALL  
INCLUSIVE. INFORMATION  
SHOWN WAS OBTAINED  
FROM AVAILABLE RECORDS.  
FIELD INVESTIGATION  
SHOULD BE CONDUCTED TO  
DETERMINE ACCURACY.

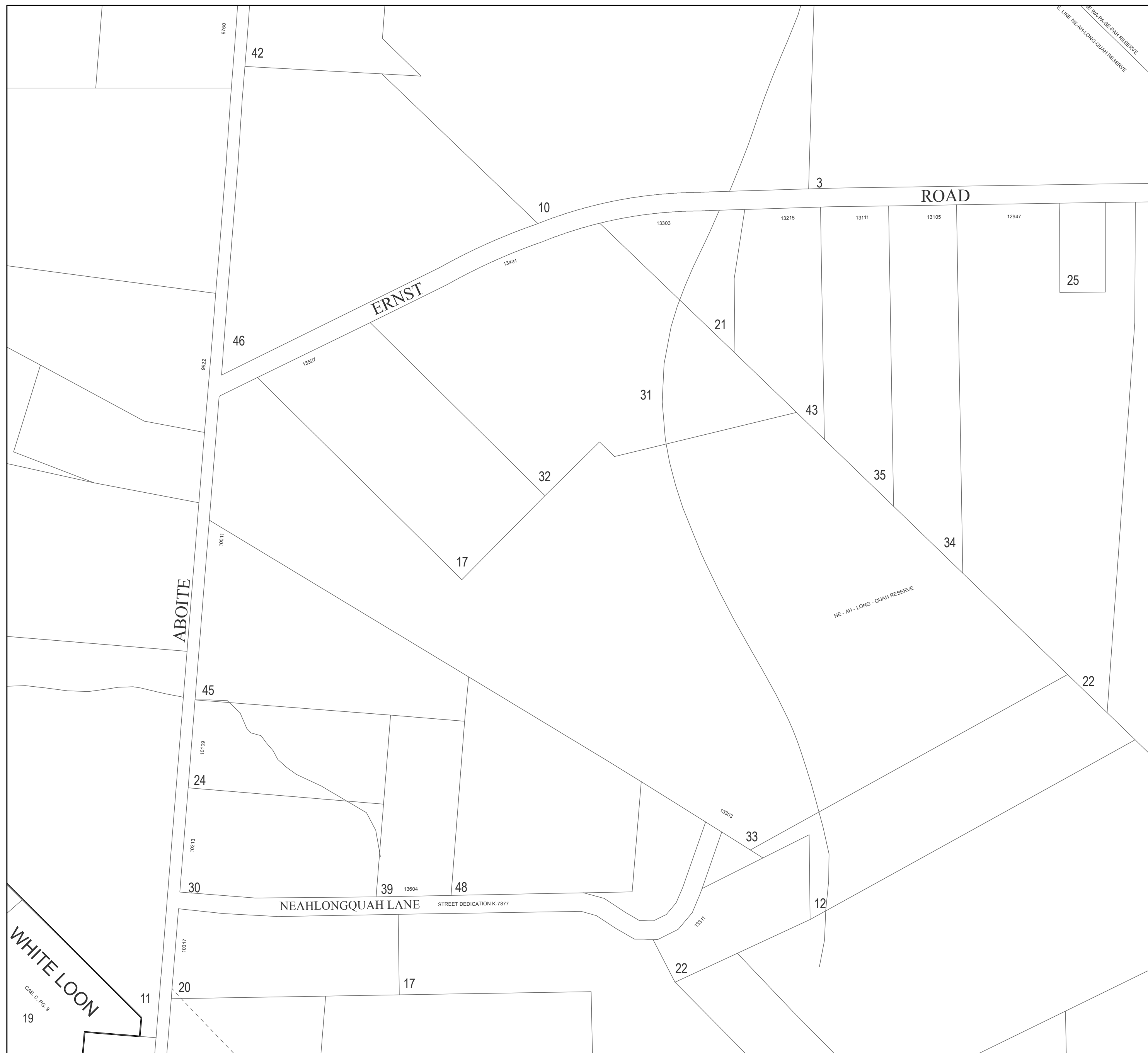
**CITY OF FORT WAYNE**  
**STREET ENGINEERING**  
CITIZENS SQUARE  
200 EAST BERRY STREET  
FORT WAYNE, IN 46802

**MAP SCALE : 1" = 200'**  
(PRINT AT 15" X 18" PAGE SIZE)



MAP NO.  
**GG43**

12/8/2015



**WHITE LOON**  
CAB. C-PG. 8  
19

**ABOITE**

**ERNST**

**ROAD**

**NEAHLONGQUAH LANE** STREET DEDICATION K-7877

9750

42

10

3

46

25

21

31

43

32

35

34

17

22

45

24

33

30

39

48

12

STREET DEDICATION K-7877

20

17

22

11