

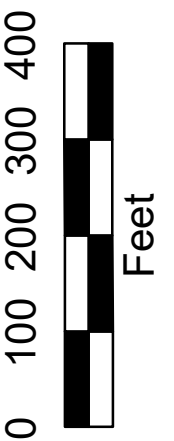


PRODUCED BY
CITY OF FORT WAYNE
G.I.S. DEPARTMENT

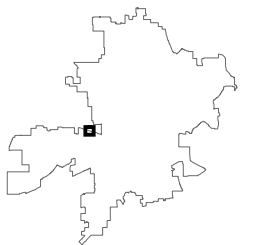
NOTICE: THE INFORMATION
DEPICTED ON THIS MAP
CONCERNING LOCATION,
TYPE, AND SIZE OF STREET
INFRASTRUCTURE IS NOT
GUARANTEED TO BE
ACCURATE OR ALL
INCLUSIVE. INFORMATION
SHOWN WAS OBTAINED
FROM AVAILABLE RECORDS.
FIELD INVESTIGATION
SHOULD BE CONDUCTED TO
DETERMINE ACCURACY.

CITY OF FORT WAYNE
STREET ENGINEERING
CITIZENS SQUARE
200 EAST BERRY STREET
FORT WAYNE, IN 46802

MAP SCALE : 1" = 200'
(PRINT AT 15" X 18" PAGE SIZE)



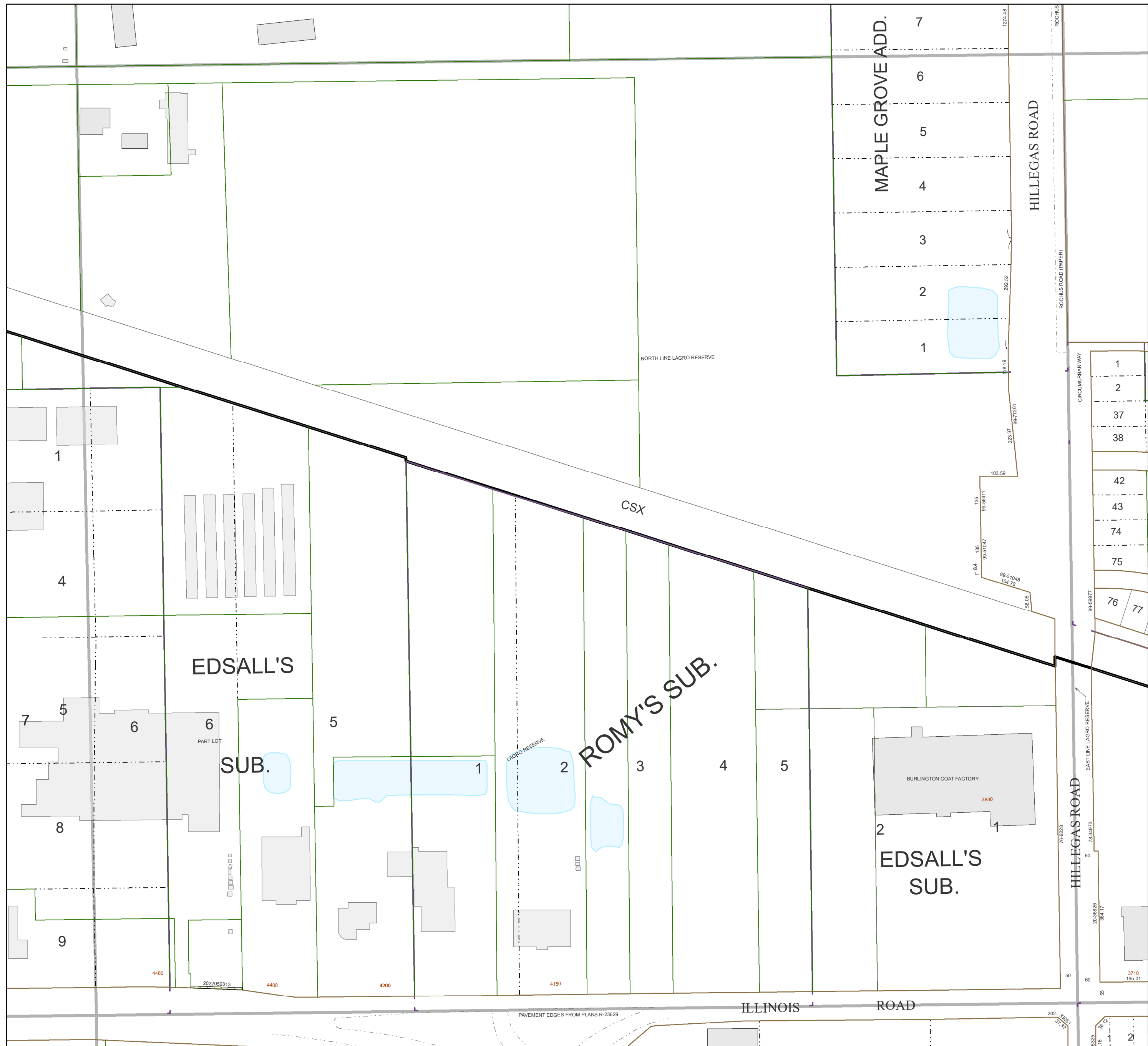
SE 1/4 SEC. 5
TOWNSHIP 30 N, RANGE 12 E
WAYNE TWP, ALLEN CO.



MAP NO.

G06

9/14/2022



MAPLE GROVE ADD.

7
6
5
4
3
2
1

HILLEGAS ROAD

CSX

EDSALL'S

SUB.

ROMY'S SUB.

EDSALL'S
SUB.

BURLINGTON COAT FACTORY

ILLINOIS ROAD

HILLEGAS ROAD

PAVEMENT EDGES FROM PLANS R-23629