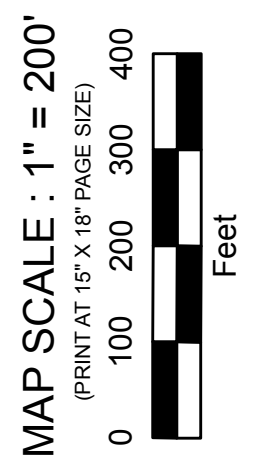




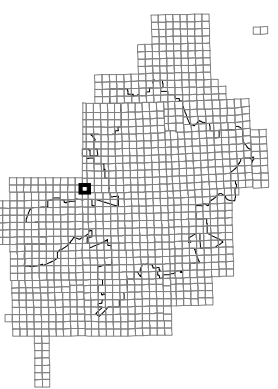
PRODUCED BY  
CITY OF FORT WAYNE  
G.I.S. DEPARTMENT

NOTICE: THE INFORMATION  
DEPICTED ON THIS MAP  
CONCERNING LOCATION,  
TYPE, AND SIZE OF STREET  
INFRASTRUCTURE IS NOT  
GUARANTEED TO BE  
ACCURATE OR ALL  
INCLUSIVE. INFORMATION  
SHOWN WAS OBTAINED  
FROM AVAILABLE RECORDS.  
FIELD INVESTIGATION  
SHOULD BE CONDUCTED TO  
DETERMINE ACCURACY.

**CITY OF FORT WAYNE**  
**STREET ENGINEERING**  
CITIZENS SQUARE  
200 EAST BERRY STREET  
FORT WAYNE, IN 46802

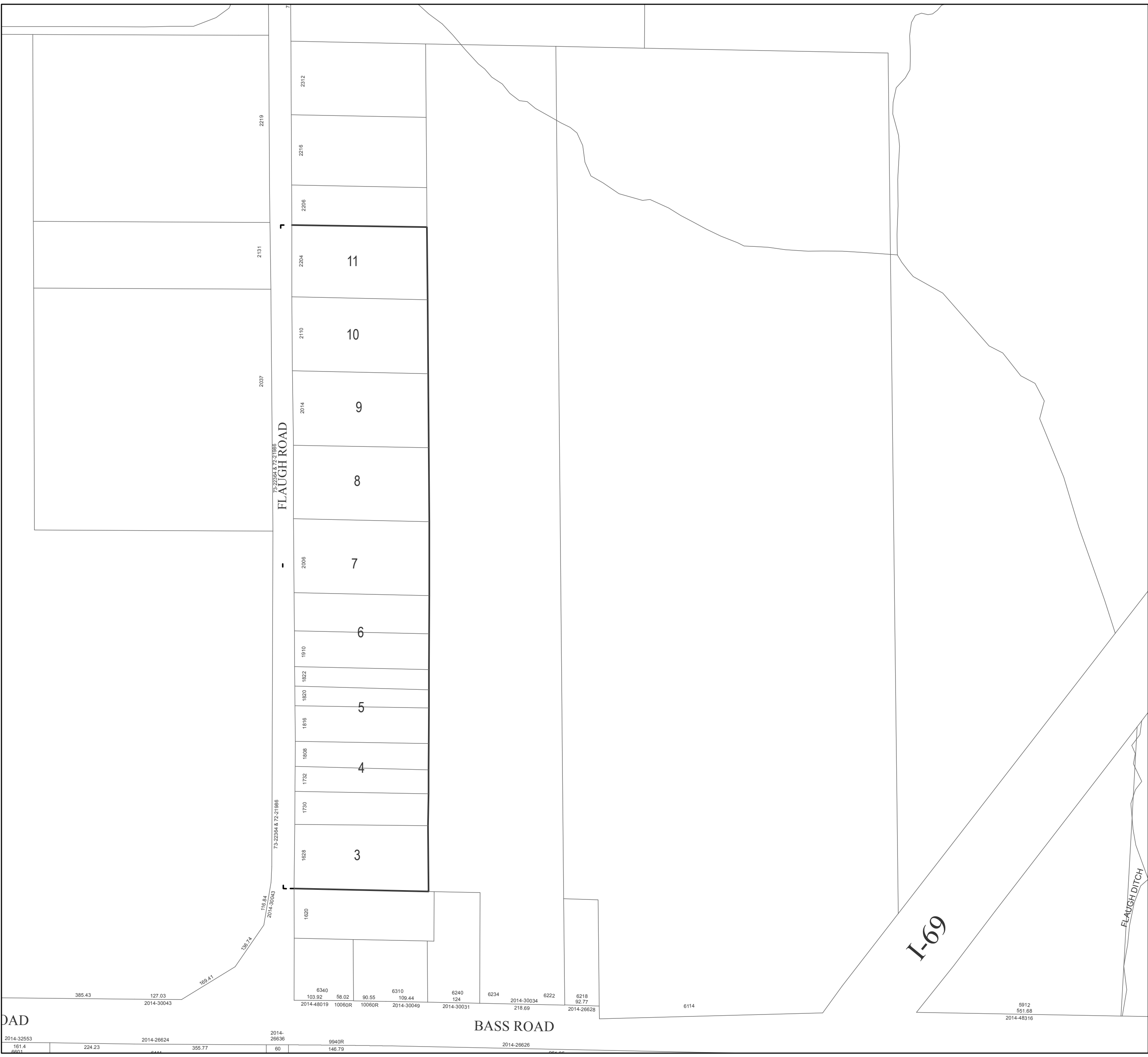


SW 1/4 SEC. 31  
TOWNSHIP 31 N, RANGE 12 E  
WASHINGTON TWP, ALLEN CO.



MAP NO.  
**D14**

12/8/2015



DAD

2014-32553 151.4 660.1 224.23 2014-26624 127.03 2014-30043 169.41 112.84 2014-30043 73-22384 & 72-21886 136.74 2037 2131 2219 73-22384 & 72-21886 2512 2216 2206 2204 11 2110 10 2014 9 2006 7 1910 1822 1820 1816 5 1808 1732 4 1730 1628 3 1620 6340 103.92 58.02 6310 90.55 109.44 6240 124 2014-30031 6234 2014-30034 6222 6218 92.77 6114 218.69 2014-26628 5912 551.68 2014-48316 9940R 146.79 2014-26626 2014-26624 355.77 60 2014-26624 2014-26624 9940R 146.79 2014-26626 2014-26626