



PRODUCED BY  
CITY OF FORT WAYNE  
G.I.S. DEPARTMENT

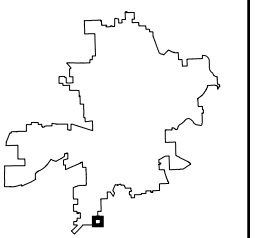
**LEGEND**

- SEWER / COMBO MANHOLE
- STORM MANHOLE
- ⊗ RETIRED MANHOLE
- △ CATCH BASIN
- INLET
- CLEANOUT
- ⊕ DISCHARGE
- ⊠ GATE VALVE
- ⌒ HEADWALL
- ⌒ HEADWALL w/FLAPGATE
- ⌒ BULKHEAD / PLUG
- PS PUMP STATION
- R REGULATOR
- ⊖ VALVE PIT
- ⊖ AIR RELEASE VALVE
- ▼ DUCKBILL FLAPGATE
- SANITARY PIPE
- STORM PIPE
- COMBINED PIPE
- PRESSURIZED MAIN
- PRIVATE MAIN
- RETIRED MAIN
- R22 176 STRUCTURE ID
- 12345 PROJECT ID

NOTICE: THE INFORMATION DEPICTED ON THIS MAP CONCERNING LOCATION, TYPE, SIZE AND MATERIAL OF UNDERGROUND UTILITIES IS NOT GUARANTEED TO BE ACCURATE OR ALL INCLUSIVE. INFORMATION SHOWN WAS OBTAINED FROM AVAILABLE RECORDS. FIELD INVESTIGATION SHOULD BE CONDUCTED TO DETERMINE ACCURACY.

**CITY OF FORT WAYNE**  
**CITY UTILITIES**  
CITIZENS SQUARE  
200 E. BERRY STREET  
FORT WAYNE, IN 46802

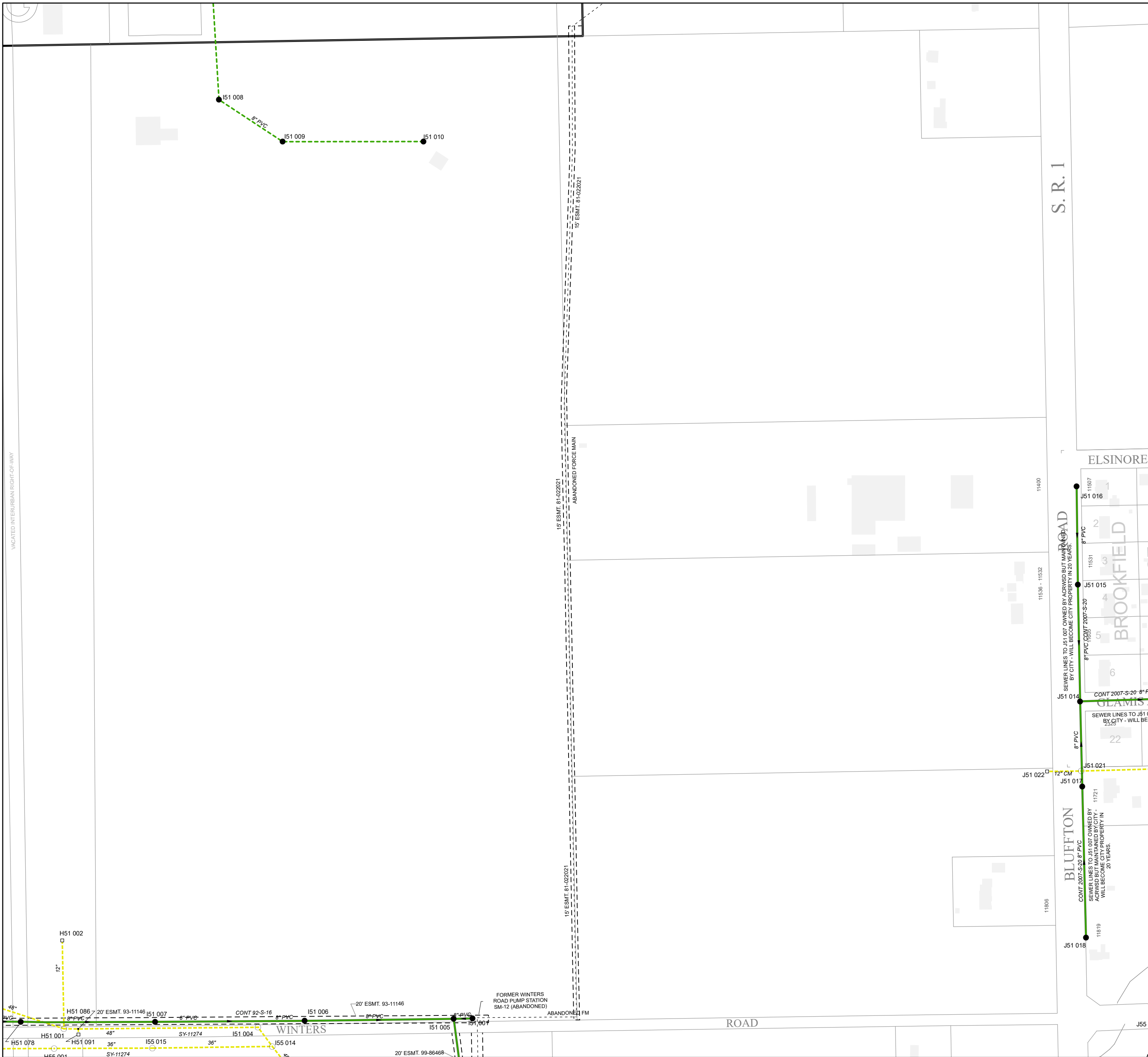
SE 1/4 SEC. 9  
TOWNSHIP 29 N, RANGE 12 E  
PLEASANT TWP, ALLEN CO.  
MAP SCALE : 1" = 200'



MAP NO.

**I51**

6/29/2023



VACATED INTERURBAN RIGHT-OF-WAY

15' ESMT. 81-022021  
ABANDONED FORCE MAIN

15' ESMT. 81-022021  
ABANDONED FORCE MAIN

15' ESMT. 81-022021  
ABANDONED FM

FORMER WINTERS ROAD PUMP STATION SM-12 (ABANDONED)

SEWER LINES TO J51 007 OWNED BY ACRESWD BUT MAINTAINED BY CITY - WILL BECOME CITY PROPERTY IN 20 YEARS.

SEWER LINES TO J51 007 OWNED BY ACRESWD BUT MAINTAINED BY CITY - WILL BECOME CITY PROPERTY IN 20 YEARS.

SEWER LINES TO J51 007 OWNED BY ACRESWD BUT MAINTAINED BY CITY - WILL BECOME CITY PROPERTY IN 20 YEARS.

SEWER LINES TO J51 007 OWNED BY ACRESWD BUT MAINTAINED BY CITY - WILL BECOME CITY PROPERTY IN 20 YEARS.