

(OLD U. S. 30)

ROAD



PRODUCED BY  
CITY OF FORT WAYNE  
G.I.S. DEPARTMENT

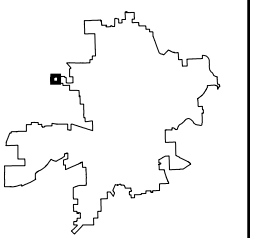
**LEGEND**

- SEWER / COMBO MANHOLE
- STORM MANHOLE
- ⊗ RETIRED MANHOLE
- △ CATCH BASIN
- INLET
- CLEANOUT
- ⊕ DISCHARGE
- ⊠ GATE VALVE
- ⌒ HEADWALL
- ⌒ HEADWALL w/FLAPGATE
- BULKHEAD / PLUG
- PS PUMP STATION
- R REGULATOR
- ⊖ VALVE PIT
- ⊕ AIR RELEASE VALVE
- ▼ DUCKBILL FLAPGATE
- SANITARY PIPE
- STORM PIPE
- COMBINED PIPE
- PRESSURIZED MAIN
- - - PRIVATE MAIN
- - - RETIRED MAIN
- R22 176 STRUCTURE ID
- 12345 PROJECT ID

NOTICE: THE INFORMATION DEPICTED ON THIS MAP CONCERNING LOCATION, TYPE, SIZE AND MATERIAL OF UNDERGROUND UTILITIES IS NOT GUARANTEED TO BE ACCURATE OR ALL INCLUSIVE. INFORMATION SHOWN WAS OBTAINED FROM AVAILABLE RECORDS. FIELD INVESTIGATION SHOULD BE CONDUCTED TO DETERMINE ACCURACY.

CITY OF FORT WAYNE  
CITY UTILITIES  
CITIZENS SQUARE  
200 E. BERRY STREET  
FORT WAYNE, IN 46802

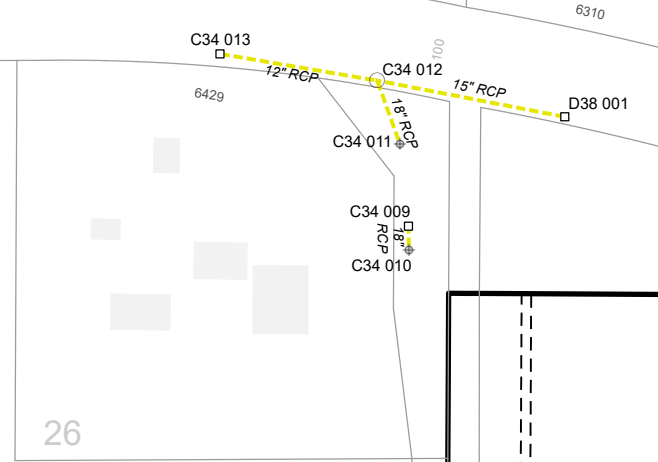
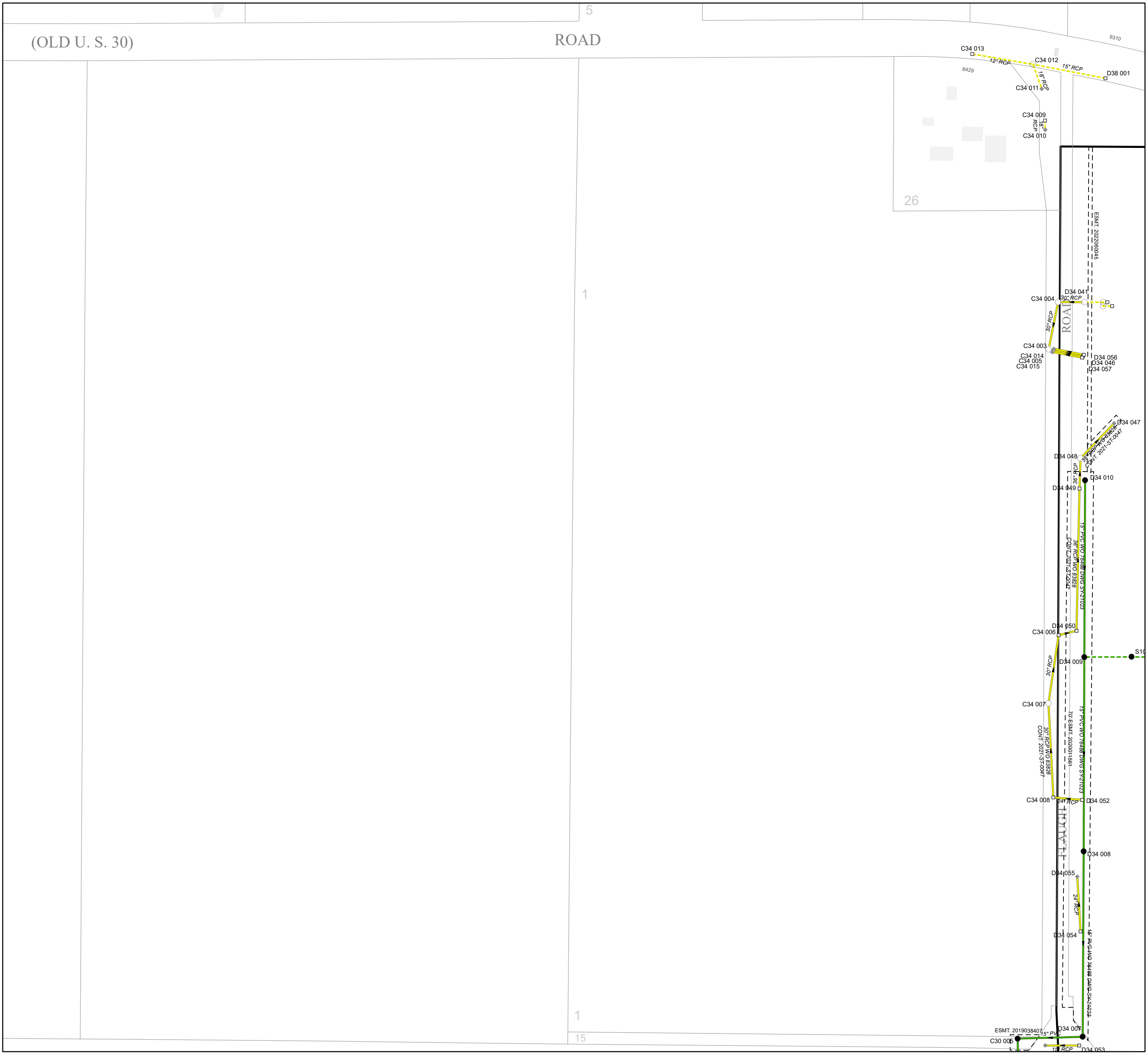
NE 1/4 SEC. 24  
TOWNSHIP 31 N, RANGE 11 E  
LAKE TWP, ALLEN CO.  
MAP SCALE : 1" = 200'



MAP NO.

**C34**

6/29/2023



1

1

15