



PRODUCED BY
CITY OF FORT WAYNE
G.I.S. DEPARTMENT

LEGEND

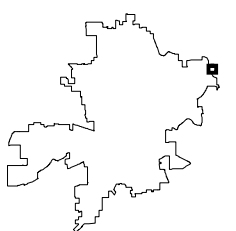
- FIRE HYDRANT
- MAIN LINE VALVE
- BUTTERFLY VALVE
- BLOWOFF VALVE
- CHECK VALVE
- VALVE PIT
- WATER JUNCTION
- REDUCER
- CUT PLUG
- WATER TANK
- WATER MAIN
- PRIVATE MAIN
- ABANDONED MAIN
- EASEMENTS

- R22 1765 HYDRANT ID
- R22 0026 VALVE ID
- R22 0026 JUNCTION ID
- R22 0026 REDUCER ID

NOTICE: THE INFORMATION DEPICTED ON THIS MAP CONCERNING LOCATION, TYPE, SIZE AND MATERIAL OF UNDERGROUND UTILITIES IS NOT GUARANTEED TO BE ACCURATE OR ALL INCLUSIVE. INFORMATION SHOWN WAS OBTAINED FROM AVAILABLE RECORDS. FIELD INVESTIGATION SHOULD BE CONDUCTED TO DETERMINE ACCURACY.

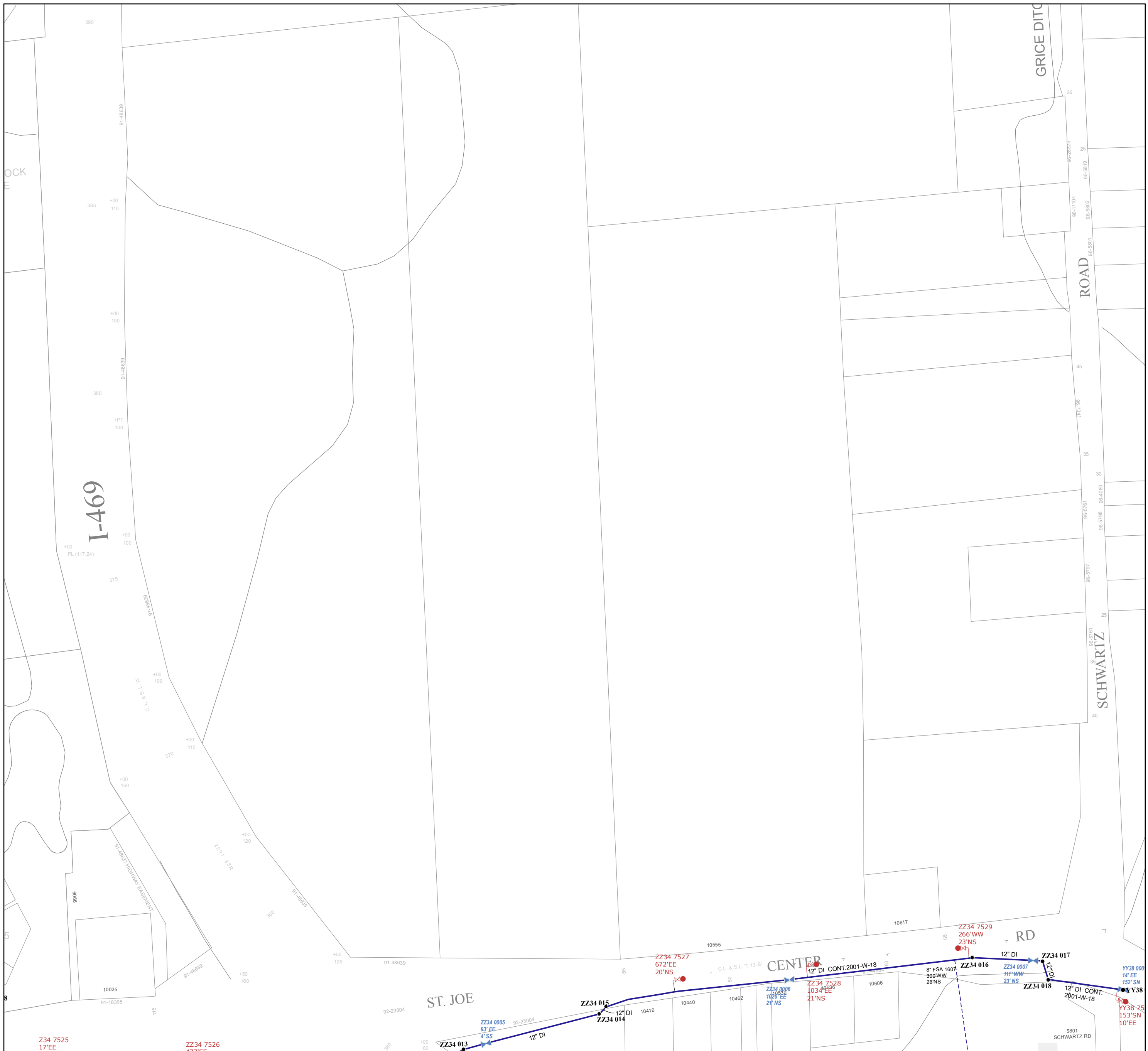
CITY OF FORT WAYNE
CITY UTILITIES
CITIZENS SQUARE
200 E. BERRY STREET
FORT WAYNE, IN 46802

SE 1/4 SEC. 13
TOWNSHIP 31 N, RANGE 13 E
ST JOSEPH TWP, ALLEN CO.
MAP SCALE : 1" = 200'



MAP NO.
ZZ38

4/12/2019



Z34 7525
17' EE

ZZ34 7526
17' EE

ZZ34 013
12" DI

ZZ34 015
ZZ34 014

ZZ34 7527
672' EE
20' NS

ZZ34 0006
1028' EE
21' NS

ZZ34 7528
1034' EE
21' NS

ZZ34 7529
266' WW
23' NS

ZZ34 016
12" DI

ZZ34 0007
114' WW
23' NS

ZZ34 018

ZZ34 017

12" DI CONT.
2001-W-18

YY38 000
14' EE
152' SN

YY38-75
153' SN
10' EE

5801
SCHWARTZ RD