



PRODUCED BY
CITY OF FORT WAYNE
G.I.S. DEPARTMENT

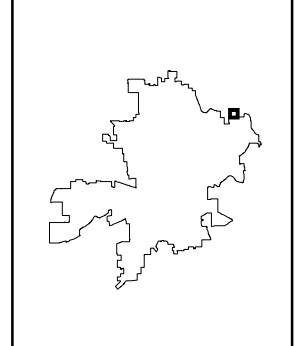
LEGEND

- FIRE HYDRANT
- MAIN LINE VALVE
- BUTTERFLY VALVE
- BLOWOFF VALVE
- CHECK VALVE
- VALVE PIT
- WATER JUNCTION
- REDUCER
- CUT PLUG
- WATER TANK
- WATER MAIN
- PRIVATE MAIN
- ABANDONED MAIN
- EASEMENTS
- R22 1765 HYDRANT ID
- R22 0026 VALVE ID
- R22 0026 JUNCTION ID
- R22 0026 REDUCER ID

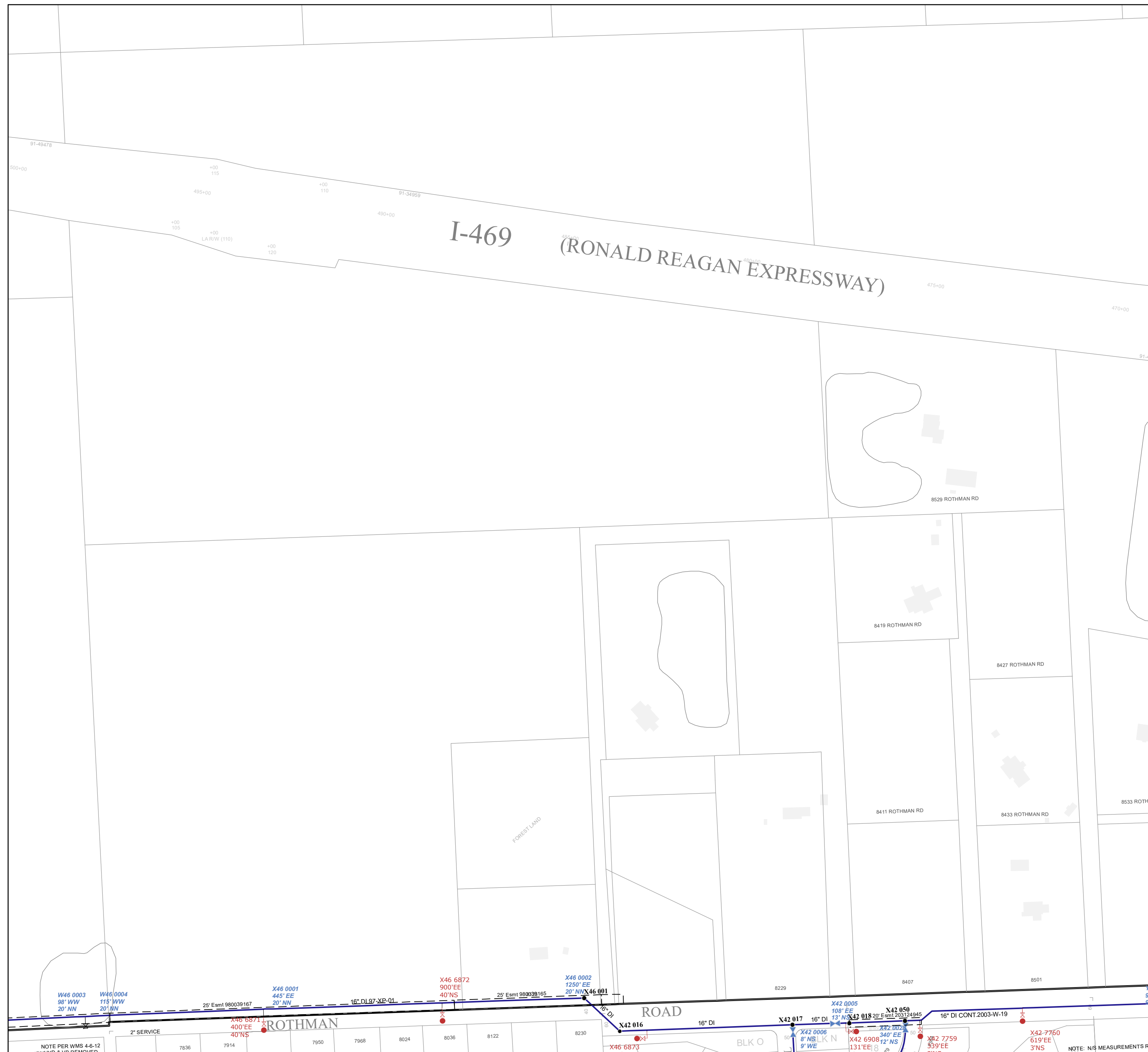
NOTICE: THE INFORMATION DEPICTED ON THIS MAP CONCERNING LOCATION, TYPE, SIZE AND MATERIAL OF UNDERGROUND UTILITIES IS NOT GUARANTEED TO BE ACCURATE OR ALL INCLUSIVE. INFORMATION SHOWN WAS OBTAINED FROM AVAILABLE RECORDS. FIELD INVESTIGATION SHOULD BE CONDUCTED TO DETERMINE ACCURACY.

CITY OF FORT WAYNE
CITY UTILITIES
CITIZENS SQUARE
200 E. BERRY STREET
FORT WAYNE, IN 46802

SW 1/4 SEC. 11
TOWNSHIP 31 N, RANGE 13 E
ST JOSEPH TWP, ALLEN CO.
MAP SCALE : 1" = 200'



MAP NO.
X46
10/2/2023



W46 0003
98' WW
20' NN

W46 0004
115' WW
20' NN

X46 0001
445' EE
20' NN

X46 6872
900' EE
40' NS

X46 0002
1250' EE
20' NN

X46 001

X42 0005
108' EE

X42 050
340' EE
12' NS

X42 017
8' NS
9' WE

X42 018
131' EE
12' NS

X42 019
539' EE
3' NS

X42 020
619' EE
3' NS

NOTE PER WMS 4-6-12
X46 0003 & X46 0004 REMOVED

NOTE: N/S MEASUREMENTS R