



PRODUCED BY
CITY OF FORT WAYNE
G.I.S. DEPARTMENT

LEGEND

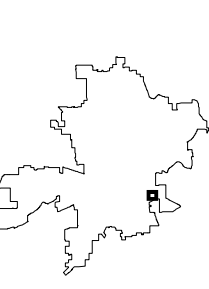
- FIRE HYDRANT
- MAIN LINE VALVE
- BUTTERFLY VALVE
- BLOWOFF VALVE
- CHECK VALVE
- VALVE PIT
- WATER JUNCTION
- REDUCER
- CUT PLUG
- WATER TANK
- WATER MAIN
- PRIVATE MAIN
- ABANDONED MAIN
- EASEMENTS

- R22 1765 HYDRANT ID
- R22 0026 VALVE ID
- R22 0026 JUNCTION ID
- R22 0026 REDUCER ID

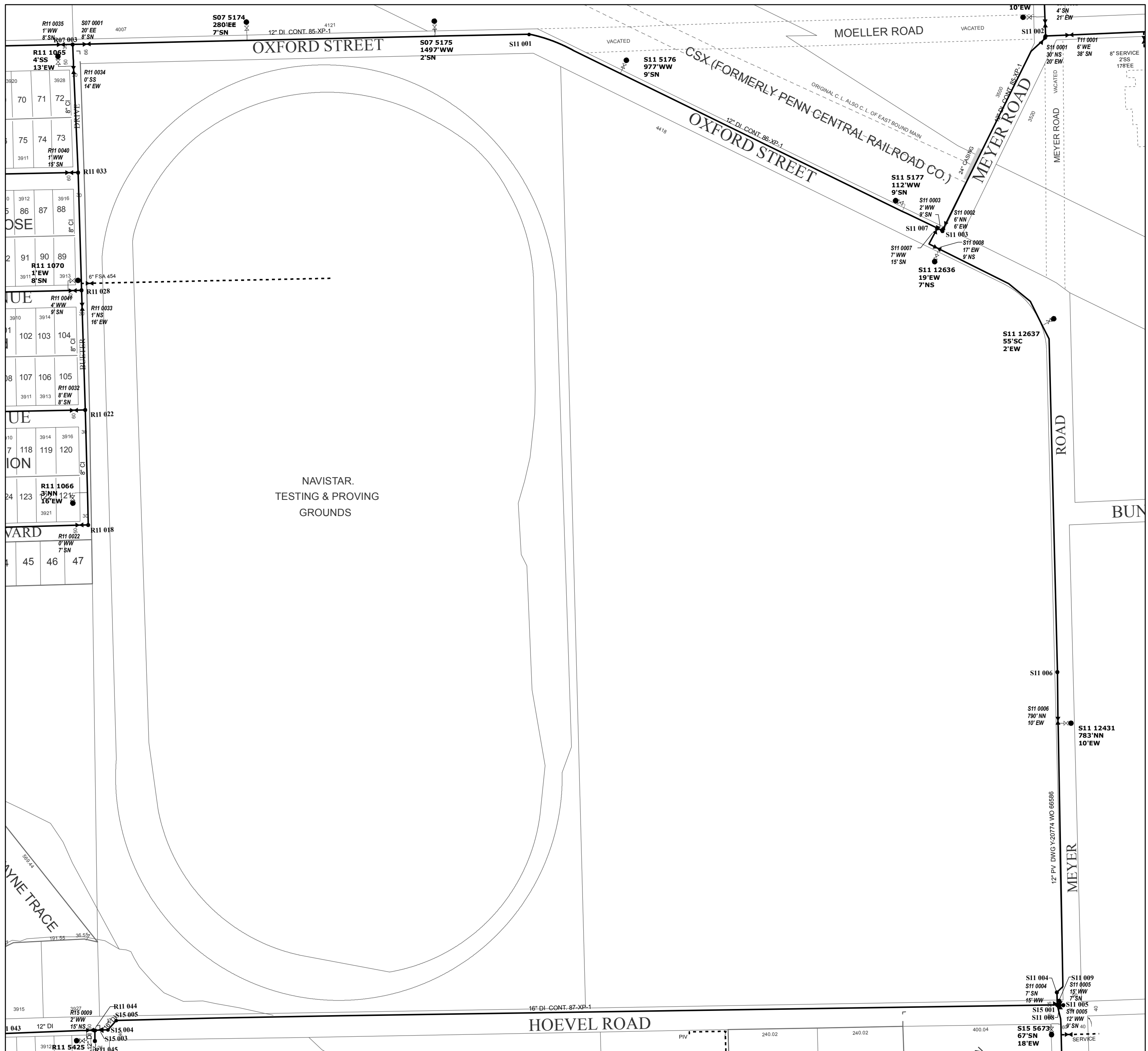
NOTICE: THE INFORMATION DEPICTED ON THIS MAP CONCERNING LOCATION, TYPE, SIZE AND MATERIAL OF UNDERGROUND UTILITIES IS NOT GUARANTEED TO BE ACCURATE OR ALL INCLUSIVE. INFORMATION SHOWN WAS OBTAINED FROM AVAILABLE RECORDS. FIELD INVESTIGATION SHOULD BE CONDUCTED TO DETERMINE ACCURACY.

CITY OF FORT WAYNE
CITY UTILITIES
CITIZENS SQUARE
200 E. BERRY STREET
FORT WAYNE, IN 46802

SE 1/4 SEC. 17
TOWNSHIP 30 N, RANGE 13 E
ADAMS TWP, ALLEN CO.
MAP SCALE : 1" = 200'



MAP NO.
S11
1/3/2019



HOEVEL ROAD

MEYER ROAD

MOELLER ROAD

OXFORD STREET

CSX (FORMERLY PENN-CENTRAL RAILROAD CO.)

NAVISTAR TESTING & PROVING GROUNDS

BUN

WYNE TRACE