



PRODUCED BY  
CITY OF FORT WAYNE  
G.I.S. DEPARTMENT

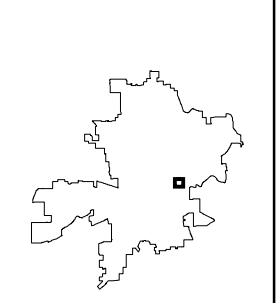
**LEGEND**

- FIRE HYDRANT
  - MAIN LINE VALVE
  - BUTTERFLY VALVE
  - BLOWOFF VALVE
  - CHECK VALVE
  - VALVE PIT
  - WATER JUNCTION
  - REDUCER
  - CUT PLUG
  - WATER TANK
  - WATER MAIN
  - PRIVATE MAIN
  - ABANDONED MAIN
  - EASEMENTS
- R22 1765 HYDRANT ID  
R22 0026 VALVE ID  
R22 0026 JUNCTION ID  
R22 0026 REDUCER ID

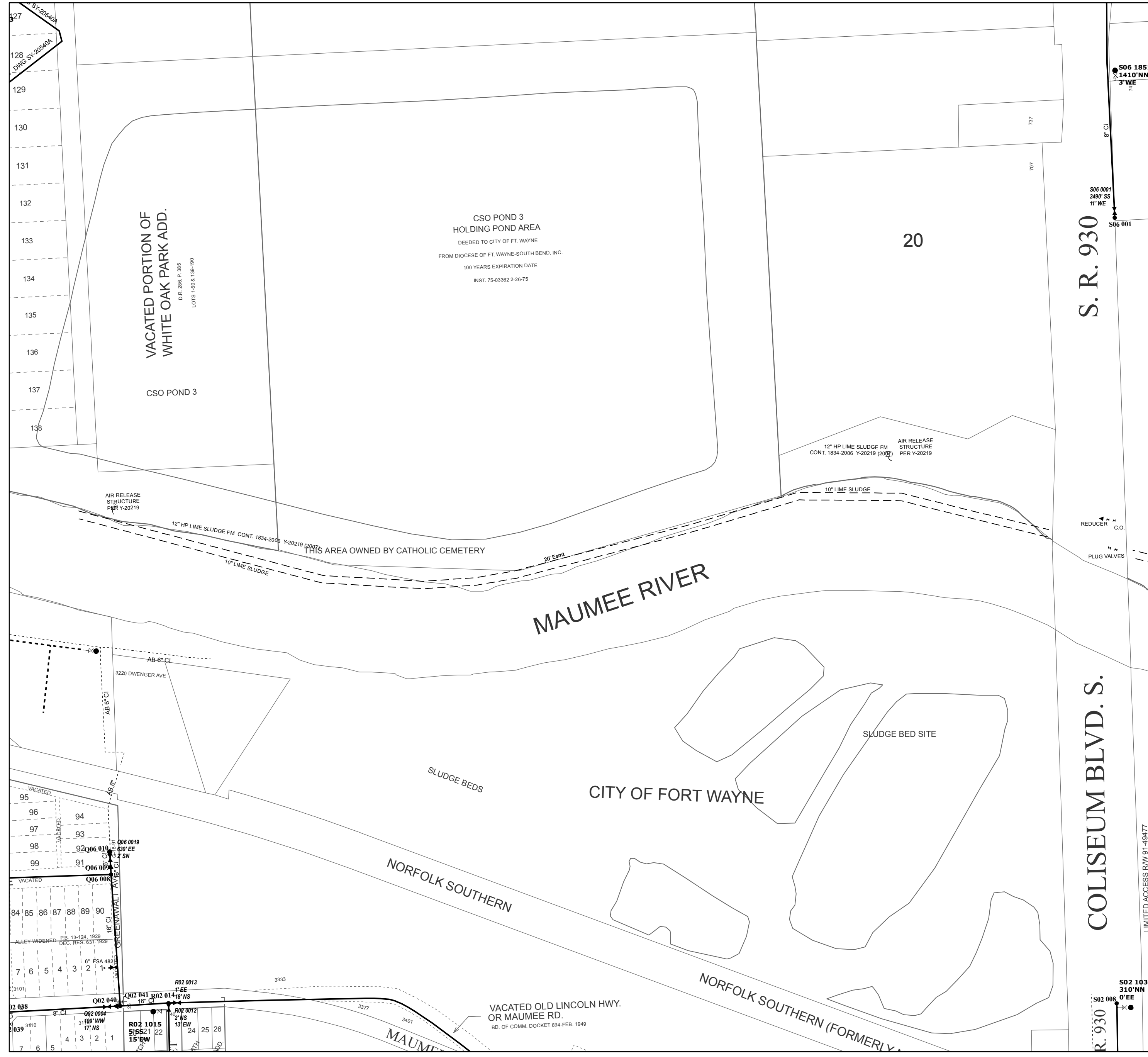
NOTICE: THE INFORMATION DEPICTED ON THIS MAP CONCERNING LOCATION, TYPE, SIZE AND MATERIAL OF UNDERGROUND UTILITIES IS NOT GUARANTEED TO BE ACCURATE OR ALL INCLUSIVE. INFORMATION SHOWN WAS OBTAINED FROM AVAILABLE RECORDS. FIELD INVESTIGATION SHOULD BE CONDUCTED TO DETERMINE ACCURACY.

**CITY OF FORT WAYNE**  
**CITY UTILITIES**  
CITIZENS SQUARE  
200 E. BERRY STREET  
FORT WAYNE, IN 46802

SW 1/4 SEC. 5  
TOWNSHIP 30 N, RANGE 13 E  
ADAMS TWP, ALLEN CO.  
MAP SCALE : 1" = 200'



MAP NO.  
**R06**  
11/6/2018



S. R. 930

COLISEUM BLVD. S.

LIMITED ACCESS R/W 91.49477

S02 1030  
310' NN  
0' EE  
S02 008

S06 1851  
1410' NN  
3' WE

S06 001  
2490' SS  
11' WE

128  
D.W.G. SY-20540A  
129  
130  
131  
132  
133  
134  
135  
136  
137  
138

95  
96  
97  
98  
99  
84  
85  
86  
87  
88  
89  
90  
7  
6  
5  
4  
3  
2  
1  
R02 1015  
5521  
15'EW

VACATED PORTION OF  
WHITE OAK PARK ADD.  
D.R. 286, P. 385  
LOTS 1-50 & 139-190

CSO POND 3  
HOLDING POND AREA  
DEEDED TO CITY OF FT. WAYNE  
FROM DIOCESE OF FT. WAYNE-SOUTH BEND, INC.  
100 YEARS EXPIRATION DATE  
INST. 75-03362 2-26-75

20

MAUMEE RIVER

CITY OF FORT WAYNE

NORFOLK SOUTHERN

NORFOLK SOUTHERN (FORMERLY)

VACATED OLD LINCOLN HWY.  
OR MAUMEE RD.  
BD. OF COMM. DOCKET 694-FEB. 1949

AIR RELEASE  
STRUCTURE  
PER Y-20219

12" HP LIME SLUDGE FM CONT. 1834-2006 Y-20219 (2007)

12" HP LIME SLUDGE FM  
CONT. 1834-2006 Y-20219 (2007)  
AIR RELEASE  
STRUCTURE  
PER Y-20219

10" LIME SLUDGE

10" LIME SLUDGE

THIS AREA OWNED BY CATHOLIC CEMETERY

SLUDGE BEDS

SLUDGE BED SITE

REDUCER  
C.O.  
PLUG VALVES