



PRODUCED BY  
CITY OF FORT WAYNE  
G.I.S. DEPARTMENT

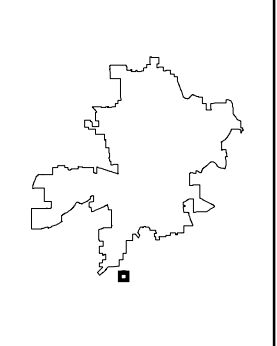
**LEGEND**

- FIRE HYDRANT
- MAIN LINE VALVE
- BUTTERFLY VALVE
- BLOWOFF VALVE
- CHECK VALVE
- VALVE PIT
- WATER JUNCTION
- REDUCER
- CUT PLUG
- WATER TANK
- WATER MAIN
- PRIVATE MAIN
- ABANDONED MAIN
- EASEMENTS
- R22 1765 HYDRANT ID
- R22 0026 VALVE ID
- R22 0026 JUNCTION ID
- R22 0026 REDUCER ID

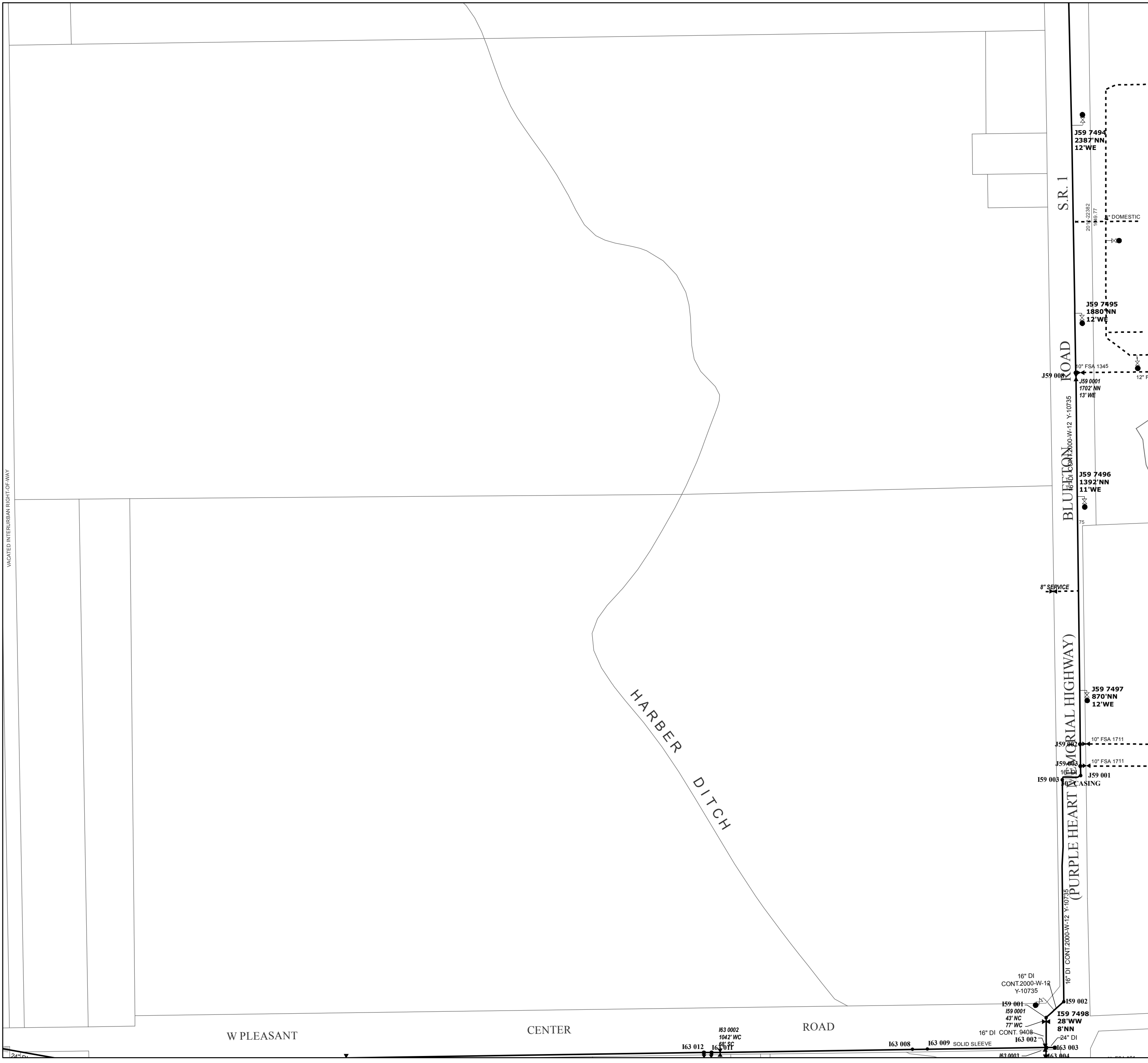
NOTICE: THE INFORMATION DEPICTED ON THIS MAP CONCERNING LOCATION, TYPE, SIZE AND MATERIAL OF UNDERGROUND UTILITIES IS NOT GUARANTEED TO BE ACCURATE OR ALL INCLUSIVE. INFORMATION SHOWN WAS OBTAINED FROM AVAILABLE RECORDS. FIELD INVESTIGATION SHOULD BE CONDUCTED TO DETERMINE ACCURACY.

**CITY OF FORT WAYNE**  
**CITY UTILITIES**  
CITIZENS SQUARE  
200 E. BERRY STREET  
FORT WAYNE, IN 46802

SE 1/4 SEC. 16  
TOWNSHIP 29 N, RANGE 12 E  
PLEASANT TWP, ALLEN CO.  
MAP SCALE : 1" = 200'



MAP NO.  
**I59**  
1/3/2019



VACATED INTERURBAN RIGHT-OF-WAY

W PLEASANT

CENTER

ROAD

163 002  
1042' WC  
88' SC

16" DI CONT. 2000-W-12 Y-10735

159 001  
159 0001  
43' NC  
77' WC

16" DI CONT. 9408

159 002  
159 7498  
28' WW  
8' NN

24" DI

163 003  
163 004

163 008  
163 009 SOLID SLEEVE

163 003

163 004