



PRODUCED BY
CITY OF FORT WAYNE
G.I.S. DEPARTMENT

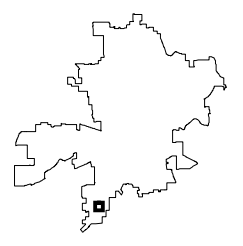
LEGEND

- FIRE HYDRANT
 - MAIN LINE VALVE
 - BUTTERFLY VALVE
 - BLOWOFF VALVE
 - CHECK VALVE
 - VALVE PIT
 - WATER JUNCTION
 - REDUCER
 - CUT PLUG
 - WATER TANK
 - WATER MAIN
 - PRIVATE MAIN
 - ABANDONED MAIN
 - EASEMENTS
- R22 1765 HYDRANT ID
R22 0026 VALVE ID
R22 0026 JUNCTION ID
R22 0026 REDUCER ID

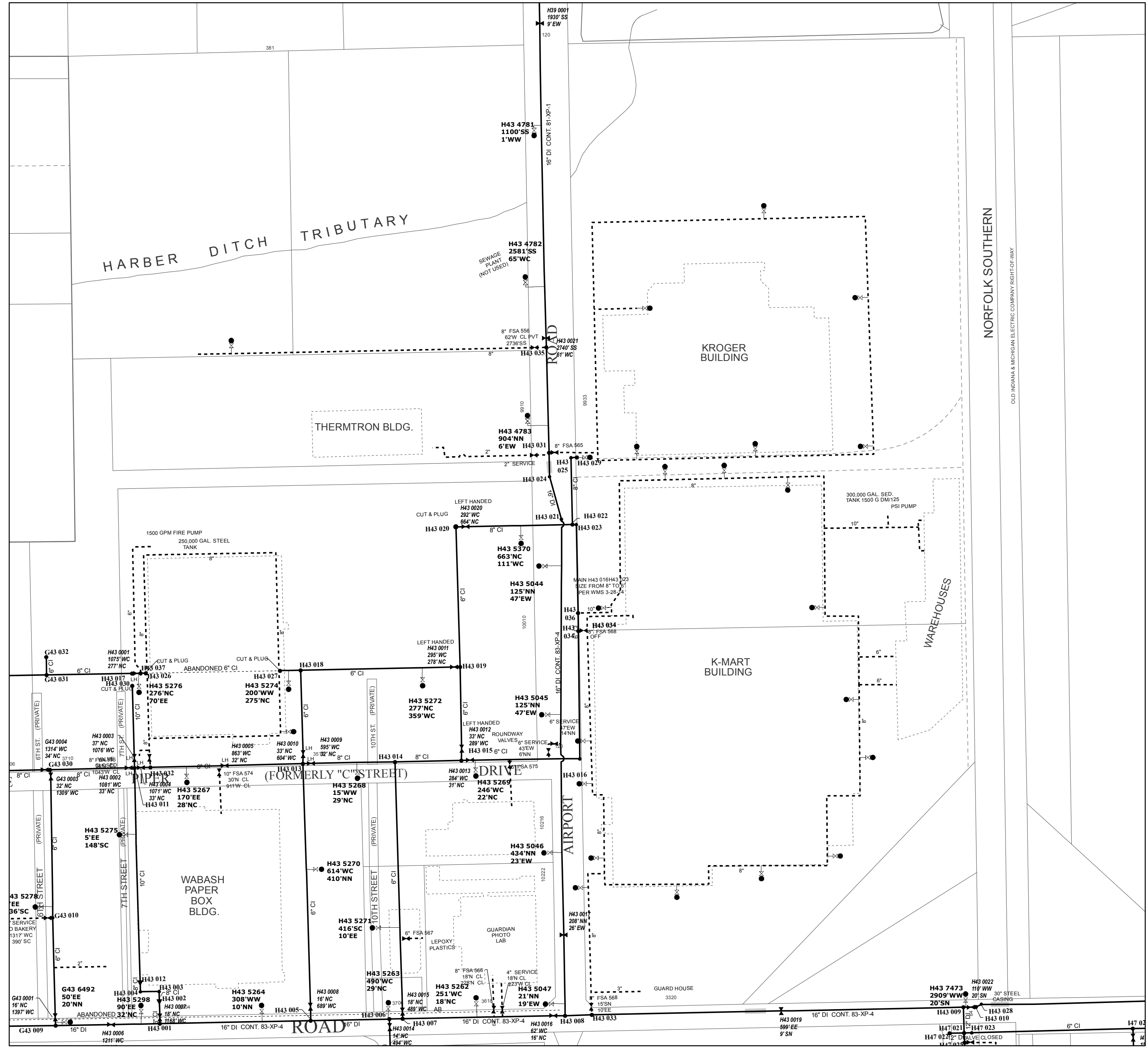
NOTICE: THE INFORMATION DEPICTED ON THIS MAP CONCERNING LOCATION, TYPE, SIZE AND MATERIAL OF UNDERGROUND UTILITIES IS NOT GUARANTEED TO BE ACCURATE OR ALL INCLUSIVE. INFORMATION SHOWN WAS OBTAINED FROM AVAILABLE RECORDS. FIELD INVESTIGATION SHOULD BE CONDUCTED TO DETERMINE ACCURACY.

CITY OF FORT WAYNE
CITY UTILITIES
CITIZENS SQUARE
200 E. BERRY STREET
FORT WAYNE, IN 46802

SW 1/4 SEC. 4
TOWNSHIP 29 N, RANGE 12 E
PLEASANT TWP, ALLEN CO.
MAP SCALE : 1" = 200'



MAP NO.
H43
1/3/2019



NORFOLK SOUTHERN

OLD INDIANA & MICHIGAN ELECTRIC COMPANY RIGHT-OF-WAY