



PRODUCED BY  
CITY OF FORT WAYNE  
G.I.S. DEPARTMENT

**LEGEND**

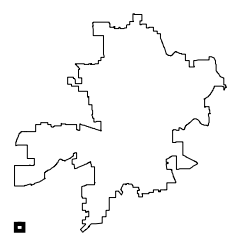
- FIRE HYDRANT
- MAIN LINE VALVE
- BUTTERFLY VALVE
- BLOWOFF VALVE
- CHECK VALVE
- VALVE PIT
- WATER JUNCTION
- REDUCER
- CUT PLUG
- WATER TANK
- WATER MAIN
- PRIVATE MAIN
- ABANDONED MAIN
- EASEMENTS

- R22 1765 HYDRANT ID
- R22 0026 VALVE ID
- R22 0026 JUNCTION ID
- R22 0026 REDUCER ID

NOTICE: THE INFORMATION DEPICTED ON THIS MAP CONCERNING LOCATION, TYPE, SIZE AND MATERIAL OF UNDERGROUND UTILITIES IS NOT GUARANTEED TO BE ACCURATE OR ALL INCLUSIVE. INFORMATION SHOWN WAS OBTAINED FROM AVAILABLE RECORDS. FIELD INVESTIGATION SHOULD BE CONDUCTED TO DETERMINE ACCURACY.

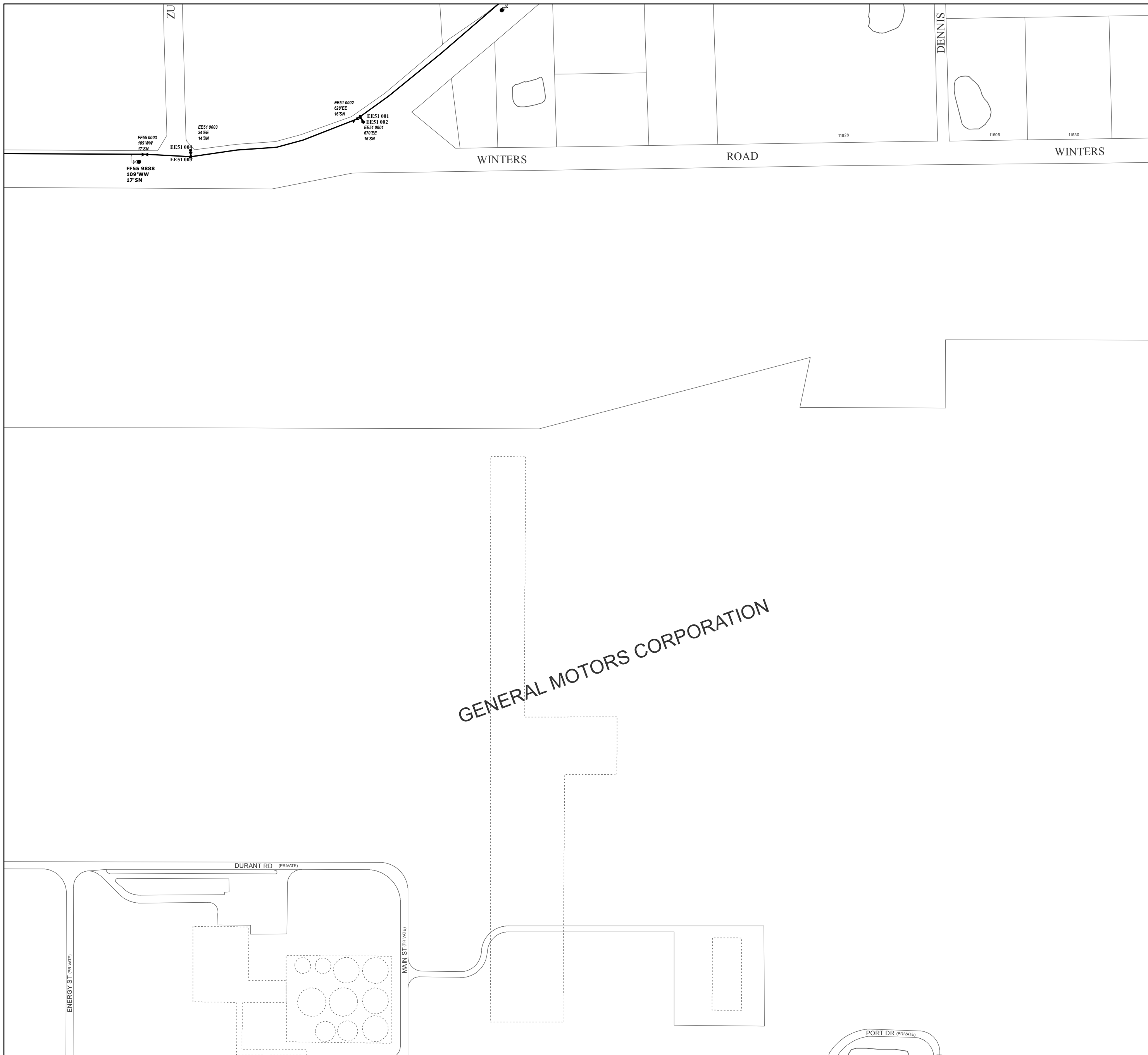
**CITY OF FORT WAYNE**  
**CITY UTILITIES**  
CITIZENS SQUARE  
200 E. BERRY STREET  
FORT WAYNE, IN 46802

NW 1/4 SEC. 16  
TOWNSHIP 29 N, RANGE 11 E  
LAFAYETTE TWP, ALLEN CO.  
MAP SCALE : 1" = 200'



MAP NO.  
**EE55**

12/5/2017



GENERAL MOTORS CORPORATION

WINTERS ROAD WINTERS

FF55 0003  
109'WW  
17'SN

FF55 9888  
109'WW  
17'SN

EE51 0003  
34'EE  
14'SN

EE51 0003  
34'EE  
14'SN

EE51 0002  
60'EE  
16'SN

EE51 0001  
67'EE  
16'SN

EE51 0002  
67'EE  
16'SN

11628

11605

11530

ENERGY ST (PRIVATE)

DURANT RD (PRIVATE)

MAIN ST (PRIVATE)

PORT DR (PRIVATE)