



PRODUCED BY
CITY OF FORT WAYNE
G.I.S. DEPARTMENT

LEGEND

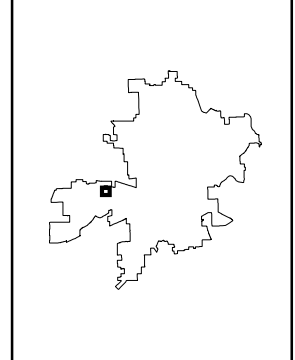
- FIRE HYDRANT
- MAIN LINE VALVE
- BUTTERFLY VALVE
- BLOWOFF VALVE
- CHECK VALVE
- VALVE PIT
- WATER JUNCTION
- REDUCER
- CUT PLUG
- WATER TANK
- WATER MAIN
- PRIVATE MAIN
- ABANDONED MAIN
- EASEMENTS

- R22 1765 HYDRANT ID
- R22 0026 VALVE ID
- R22 0026 JUNCTION ID
- R22 0026 REDUCER ID

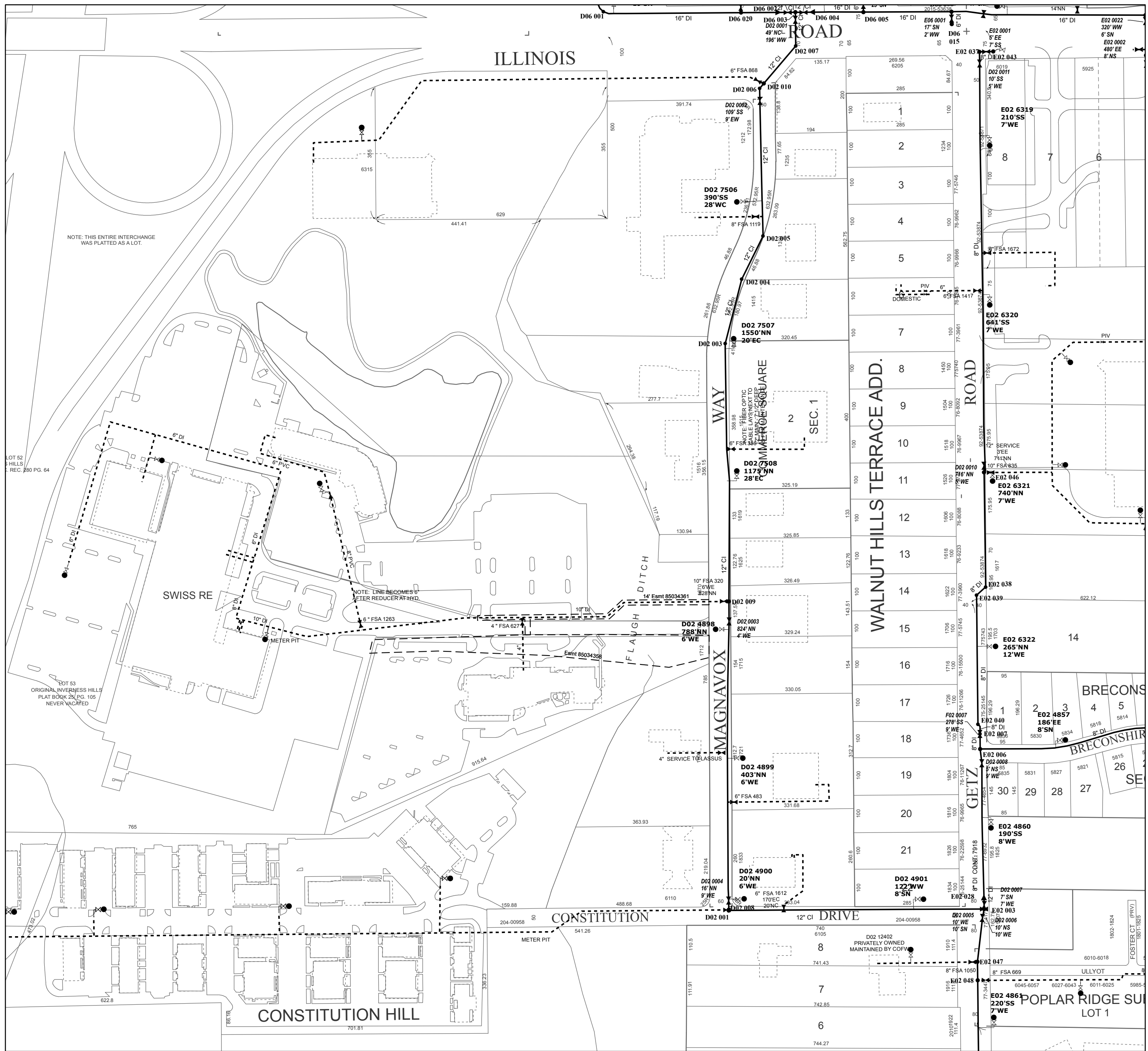
NOTICE: THE INFORMATION DEPICTED ON THIS MAP CONCERNING LOCATION, TYPE, SIZE AND MATERIAL OF UNDERGROUND UTILITIES IS NOT GUARANTEED TO BE ACCURATE OR ALL INCLUSIVE. INFORMATION SHOWN WAS OBTAINED FROM AVAILABLE RECORDS. FIELD INVESTIGATION SHOULD BE CONDUCTED TO DETERMINE ACCURACY.

CITY OF FORT WAYNE
CITY UTILITIES
 CITIZENS SQUARE
 200 E. BERRY STREET
 FORT WAYNE, IN 46802

NW 1/4 SEC. 7
 TOWNSHIP 30 N, RANGE 12 E
 WAYNE TWP, ALLEN CO.
 MAP SCALE : 1" = 200'



MAP NO.
D02
 10/15/2018



NOTE: THIS ENTIRE INTERCHANGE WAS PLATTED AS A LOT.

NOTE: LINE BECOMES 6" AFTER REDUCER AT HYD.

WALNUT HILLS TERRACE ADD.

MAGNAVOX WAY

GETZ ROAD

CONSTITUTION DRIVE

CONSTITUTION HILL

POPLAR RIDGE SUITE LOT 1

LOT 52 HILLS REC. 280 PG. 64

LOT 53 ORIGINAL INVERNESS HILLS PLAT BOOK 25 PG. 105 NEVER VACATED

D02 12402 PRIVATELY OWNED MAINTAINED BY COFW

ULLYOT

FOSTER CT (PRV) 1801-1825

6010-6018

5985-5995

6045-6057 6027-6043 6011-6025

77-5447

8" FSA 669

E02 047

E02 048

E02 049

E02 050

E02 051

E02 052

E02 053

E02 054

E02 055

E02 056

E02 057

E02 058

E02 059

E02 060

E02 061

E02 062

E02 063

E02 064

E02 065

E02 066

E02 067

E02 068

E02 069

E02 070

E02 071

E02 072

E02 073

E02 074

E02 075

E02 076

E02 077

E02 078

E02 079

E02 080

E02 081

E02 082

E02 083

E02 084

E02 085

E02 086

E02 087

E02 088

E02 089

E02 090

E02 091

E02 092

E02 093

E02 094

E02 095

E02 096

E02 097

E02 098

E02 099

E02 100

E02 101

E02 102

E02 103

E02 104

E02 105

E02 106

E02 107

E02 108

E02 109

E02 110

E02 111

E02 112

E02 113

E02 114

E02 115

E02 116

E02 117

E02 118

E02 119

E02 120

E02 121

E02 122

E02 123

E02 124

E02 125

E02 126

E02 127

E02 128

E02 129

E02 130

E02 131

E02 132

E02 133

E02 134

E02 135

E02 136

E02 137

E02 138

E02 139

E02 140

E02 141

E02 142

E02 143

E02 144

E02 145

E02 146

E02 147

E02 148

E02 149

E02 150

E02 151

E02 152

E02 153

E02 154

E02 155

E02 156

E02 157

E02 158

E02 159

E02 160

E02 161

E02 162

E02 163

E02 164

E02 165

E02 166

E02 167

E02 168

E02 169

E02 170

E02 171

E02 172

E02 173

E02 174

E02 175

E02 176

E02 177

E02 178

E02 179

E02 180

E02 181

E02 182

E02 183

E02 184

E02 185

E02 186

E02 187

E02 188

E02 189

E02 190

E02 191

E02 192

E02 193

E02 194

E02 195

E02 196

E02 197

E02 198

E02 199

E02 200

E02 201

E02 202

E02 203

E02 204

E02 205

E02 206

E02 207

E02 208

E02 209

E02 210

E02 211

E02 212

E02 213

E02 214

E02 215

E02 216

E02 217

E02 218

E02 219

E02 220

E02 221

E02 222

E02 223

E02 224

E02 225

E02 226

E02 227

E02 228

E02 229

E02 230

E02 231

E02 232

E02 233

E02 234

E02 235

E02 236

E02 237

E02 238

E02 239

E02 240

E02 241

E02 242

E02 243

E02 244

E02 245

E02 246

E02 247

E02 248

E02 249

E02 250

E02 251

E02 252

E02 253

E02 254

E02 255

E02 256

E02 257

E02 258

E02 259

E02 260

E02 261

E02 262

E02 263

E02 264

E02 265

E02 266

E02 267

E02 268

E02 269

E02 270

E02 271

E02 272

E02 273

E02 274

E02 275

E02 276

E02 277

E02 278

E02 279

E02 280

E02 281

E02 282

E02 283

E02 284

E02 285

E02 286

E02 287

E02 288

E02 289

E02 290

E02 291

E02 292

E02 293

E02 294

E02 295

E02 296