



PRODUCED BY  
CITY OF FORT WAYNE  
G.I.S. DEPARTMENT

**LEGEND**

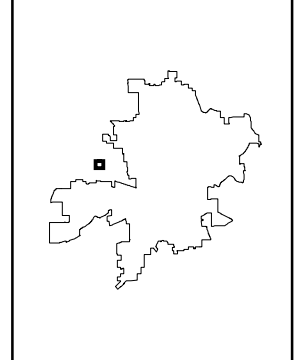
- FIRE HYDRANT
- MAIN LINE VALVE
- BUTTERFLY VALVE
- BLOWOFF VALVE
- CHECK VALVE
- VALVE PIT
- WATER JUNCTION
- REDUCER
- CUT PLUG
- WATER TANK
- WATER MAIN
- PRIVATE MAIN
- ABANDONED MAIN
- EASEMENTS

- R22 1765 HYDRANT ID
- R22 0026 VALVE ID
- R22 0026 JUNCTION ID
- R22 0026 REDUCER ID

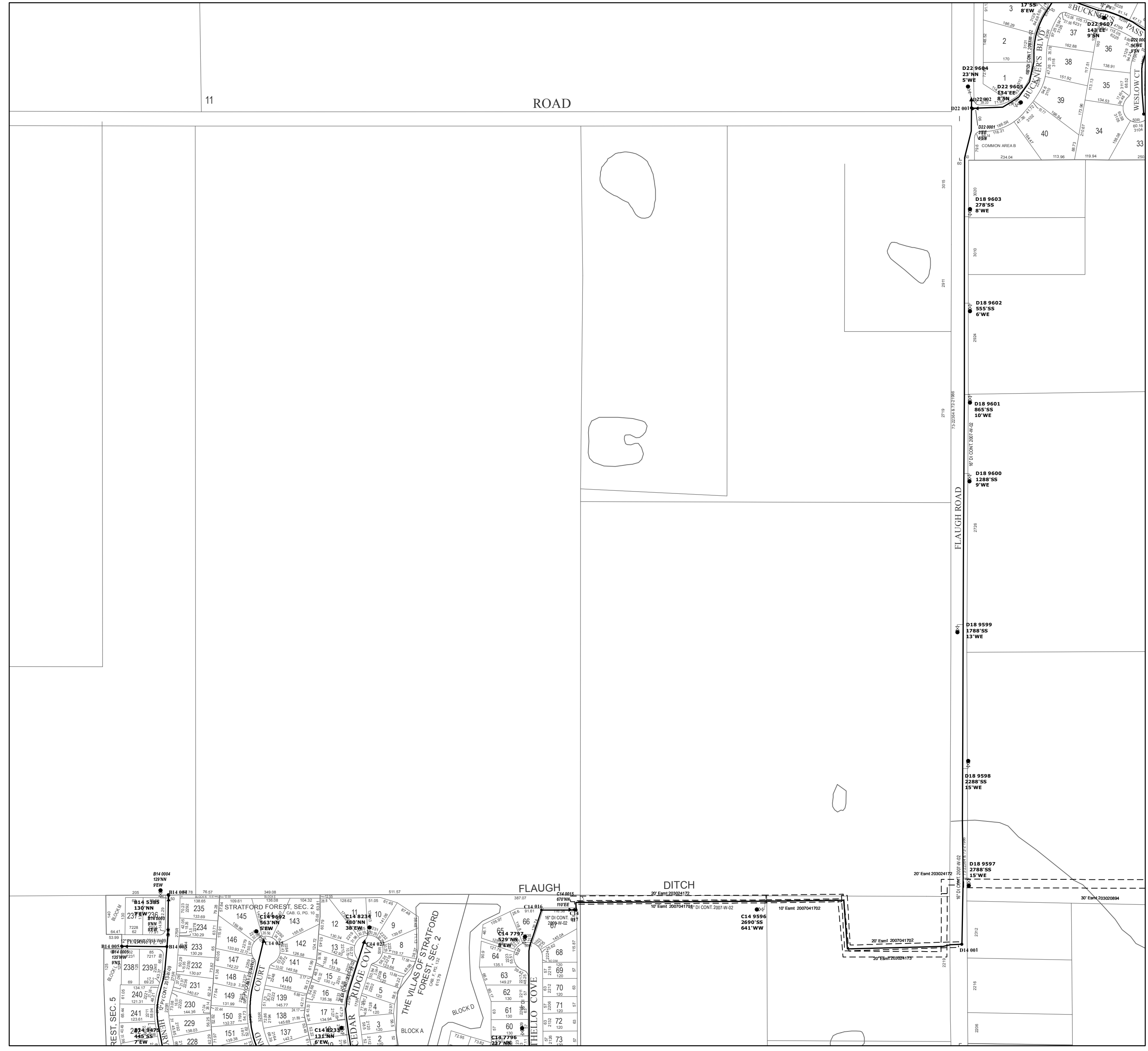
NOTICE: THE INFORMATION DEPICTED ON THIS MAP CONCERNING LOCATION, TYPE, SIZE AND MATERIAL OF UNDERGROUND UTILITIES IS NOT GUARANTEED TO BE ACCURATE OR ALL INCLUSIVE. INFORMATION SHOWN WAS OBTAINED FROM AVAILABLE RECORDS. FIELD INVESTIGATION SHOULD BE CONDUCTED TO DETERMINE ACCURACY.

**CITY OF FORT WAYNE**  
**CITY UTILITIES**  
CITIZENS SQUARE  
200 E. BERRY STREET  
FORT WAYNE, IN 46802

NE 1/4 SEC. 36  
TOWNSHIP 31 N, RANGE 11 E  
LAKE TWP, ALLEN CO.  
MAP SCALE : 1" = 200'



MAP NO.  
**C18**  
12/5/2017



11

ROAD

FLAUGH

DITCH

FLAUGH ROAD

20' Easmt 2003024172

18' DI CONT. 2007-W-02

30' Easmt 2003020894

