



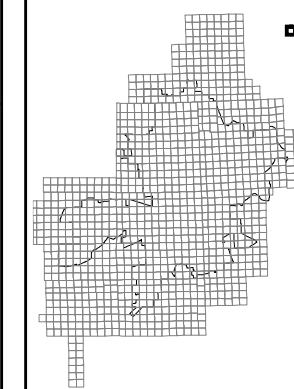
PRODUCED BY
CITY OF FORT WAYNE
G.I.S. DEPARTMENT

NOTICE: THE INFORMATION
DEPICTED ON THIS MAP
CONCERNING LOCATION,
TYPE, AND SIZE OF STREET
INFRASTRUCTURE IS NOT
GUARANTEED TO BE
ACCURATE OR ALL
INCLUSIVE. INFORMATION
SHOWN WAS OBTAINED
FROM AVAILABLE RECORDS.
FIELD INVESTIGATION
SHOULD BE CONDUCTED TO
DETERMINE ACCURACY.

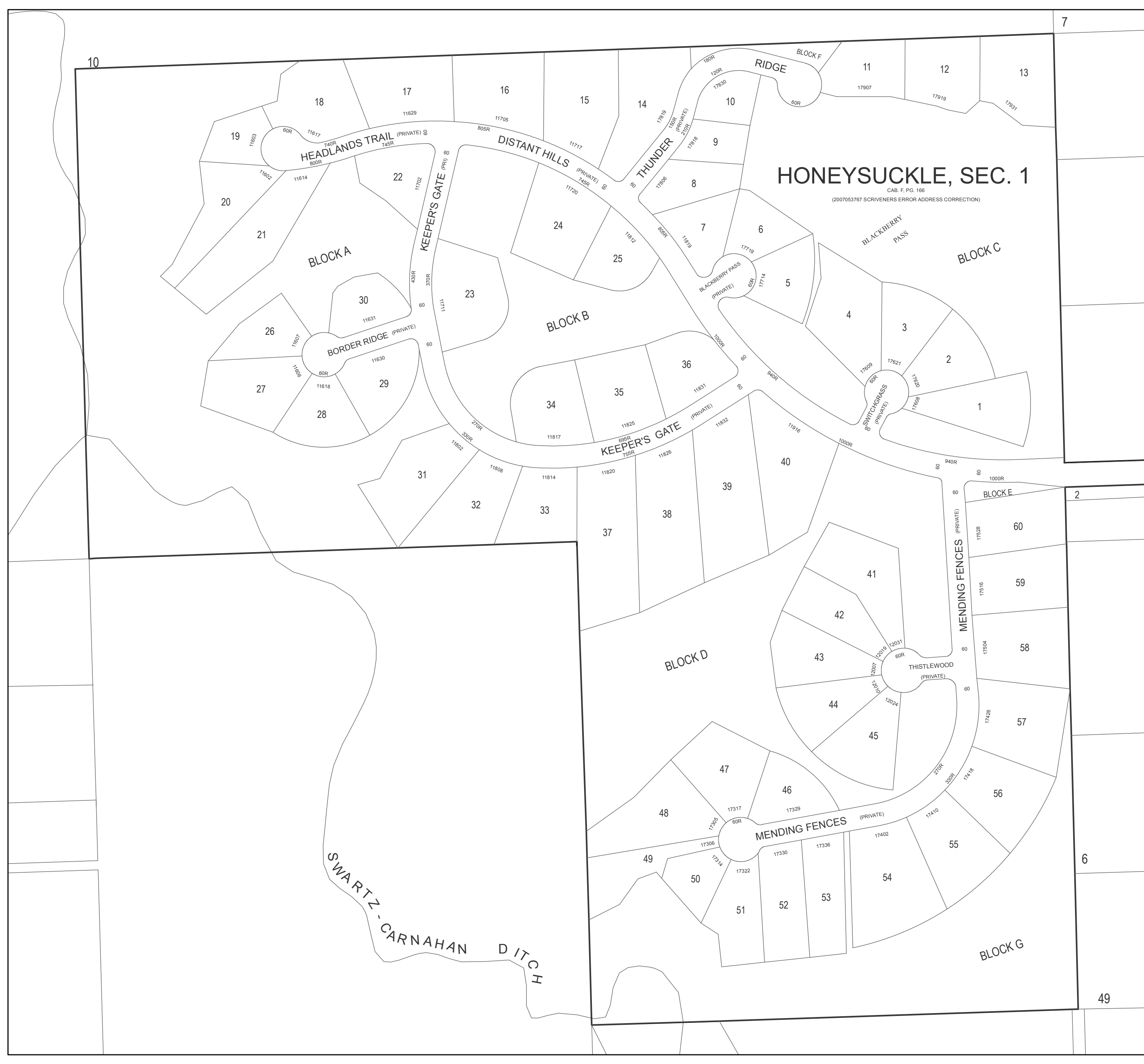
CITY OF FORT WAYNE
STREET ENGINEERING
CITIZENS SQUARE
200 EAST BERRY STREET
FORT WAYNE, IN 46802



NW 1/4 SEC. 11
TOWNSHIP 32 N, RANGE 13 E
CEDAR CR. TWP, ALLEN CO.



MAP NO.
XX98
12/8/2015



HONEYSUCKLE, SEC. 1

CAB. F. PG. 166
(2007053767 SCRIVENERS ERROR ADDRESS CORRECTION)

HEADLANDS TRAIL (PRIVATE) 745R
KEEPER'S GATE (PRI) 80R

DISTANT HILLS (PRIVATE) 745R

THUNDER (PRIVATE) 200R

BLACKBERRY PASS (PRIVATE) 60R

BLACKBERRY PASS

SWITCHGRASS (PRIVATE) 60R

KEEPER'S GATE (PRIVATE) 755R

MENDING FENCES (PRIVATE) 60

THISTLEWOOD (PRIVATE) 60R

MENDING FENCES (PRIVATE) 60

SWARTZ-CARNAHAN DITCH

BLOCK A

BLOCK B

BLOCK C

BLOCK D

BLOCK G

BLOCK F

10

7

6

49

11

12

13

19

18

17

16

15

14

10

9

8

7

6

20

21

22

23

24

25

5

4

3

2

1

26

27

28

29

31

32

34

35

36

37

38

39

40

41

42

43

44

45

47

48

49

50

51

52

53

54

55

56

57

58

59

60

2