



PRODUCED BY
CITY OF FORT WAYNE
G.I.S. DEPARTMENT

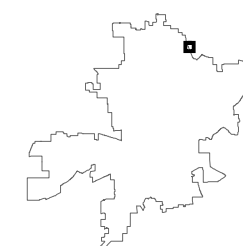
NOTICE: THE INFORMATION
DEPICTED ON THIS MAP
CONCERNING LOCATION,
TYPE, AND SIZE OF STREET
INFRASTRUCTURE IS NOT
GUARANTEED TO BE
ACCURATE OR ALL
INCLUSIVE. INFORMATION
SHOWN WAS OBTAINED
FROM AVAILABLE RECORDS.
FIELD INVESTIGATION
SHOULD BE CONDUCTED TO
DETERMINE ACCURACY.

CITY OF FORT WAYNE
STREET ENGINEERING
CITIZENS SQUARE
200 EAST BERRY STREET
FORT WAYNE, IN 46802

MAP SCALE : 1" = 200'
(PRINT AT 15" X 18" PAGE SIZE)
0 100 200 300 400

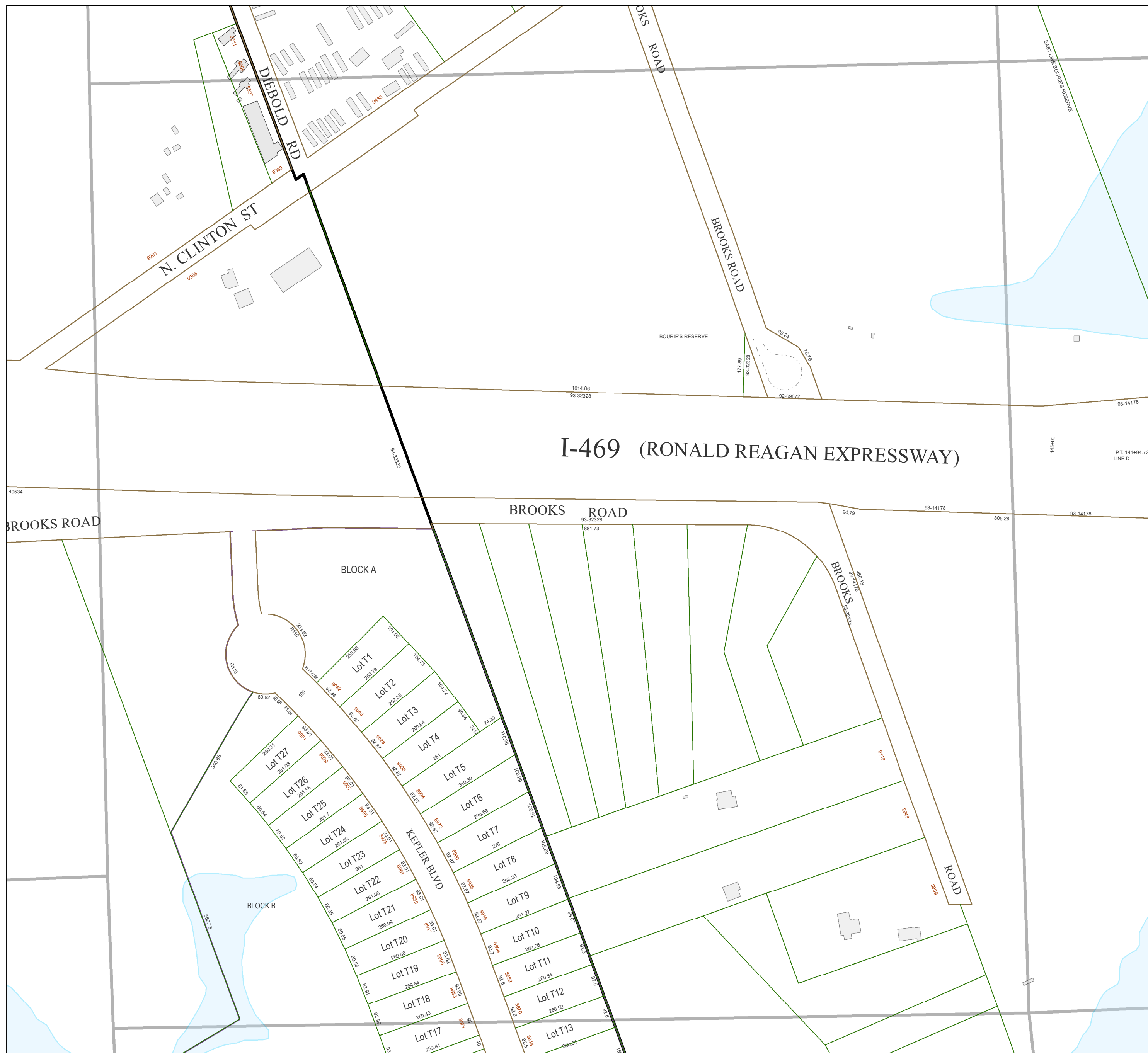
Feet

SE 1/4 SEC. 5
TOWNSHIP 31 N, RANGE 13 E
ST JOSEPH TWP, ALLEN CO.



MAP NO.
S54

11/22/2023



I-469 (RONALD REAGAN EXPRESSWAY)