



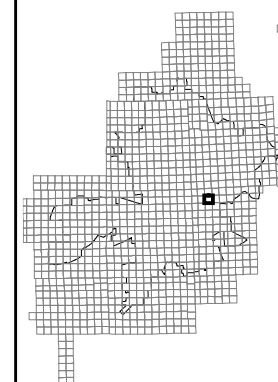
PRODUCED BY
CITY OF FORT WAYNE
G.I.S. DEPARTMENT

NOTICE: THE INFORMATION
DEPICTED ON THIS MAP
CONCERNING LOCATION,
TYPE, AND SIZE OF STREET
INFRASTRUCTURE IS NOT
GUARANTEED TO BE
ACCURATE OR ALL
INCLUSIVE. INFORMATION
SHOWN WAS OBTAINED
FROM AVAILABLE RECORDS.
FIELD INVESTIGATION
SHOULD BE CONDUCTED TO
DETERMINE ACCURACY.

CITY OF FORT WAYNE
STREET ENGINEERING
CITIZENS SQUARE
200 EAST BERRY STREET
FORT WAYNE, IN 46802

MAP SCALE : 1" = 200'
(PRINT AT 15" X 18" PAGE SIZE)
0 100 200 300 400
Feet

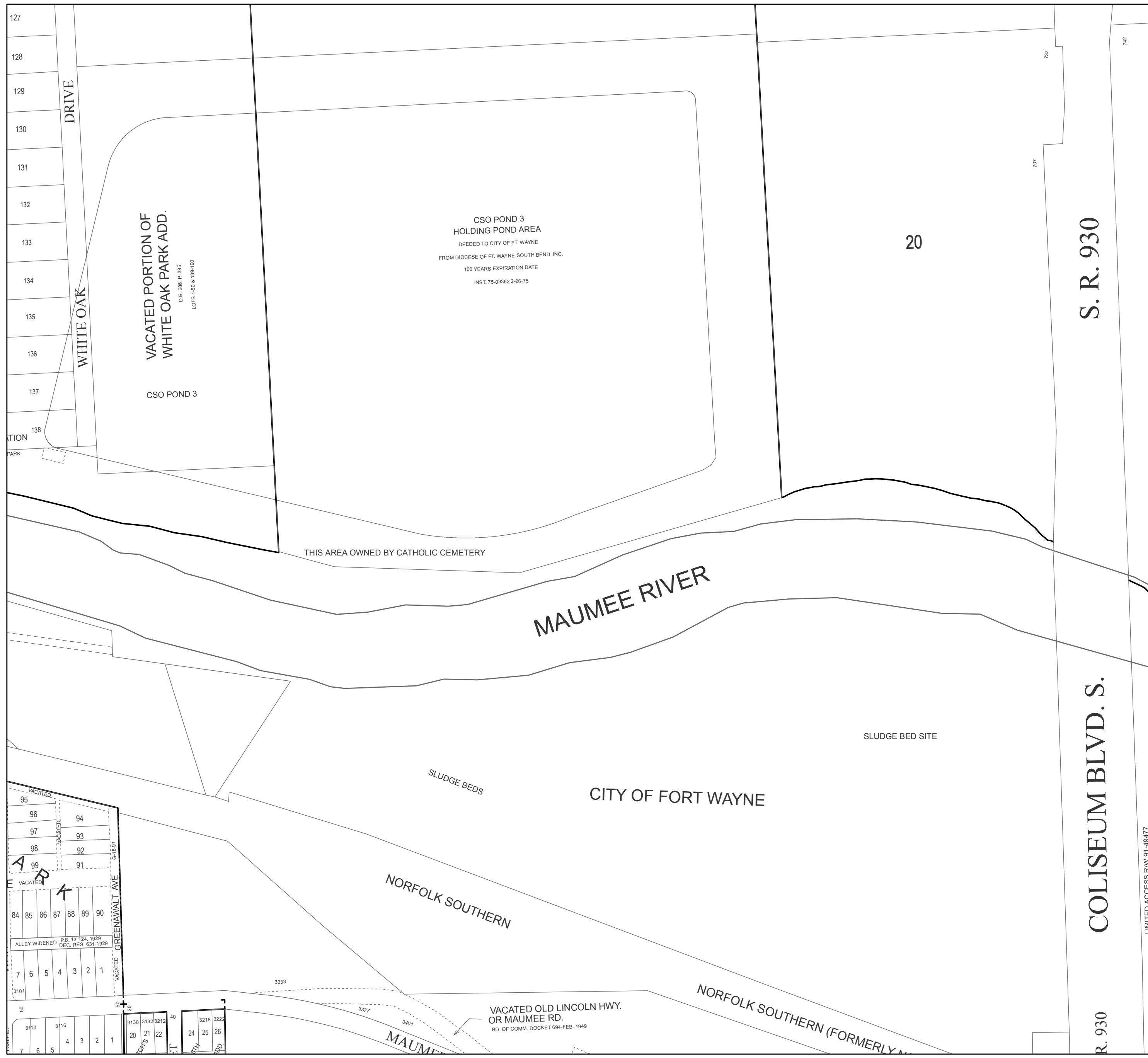
SW 1/4 SEC. 5
TOWNSHIP 30 N, RANGE 13 E
ADAMS TWP, ALLEN CO.



MAP NO.

R06

12/8/2015



VACATED PORTION OF
WHITE OAK PARK ADD.
D.R. 286, P. 385
LOTS 1-50 & 135-190

CSO POND 3
HOLDING POND AREA
DEEDED TO CITY OF FT. WAYNE
FROM DIOCESE OF FT. WAYNE-SOUTH BEND, INC.
100 YEARS EXPIRATION DATE
INST. 75-03362 2-26-75

THIS AREA OWNED BY CATHOLIC CEMETERY

MAUMEE RIVER

SLUDGE BED SITE

SLUDGE BEDS

CITY OF FORT WAYNE

NORFOLK SOUTHERN

NORFOLK SOUTHERN (FORMERLY N...)

VACATED OLD LINCOLN HWY.
OR MAUMEE RD.
BD. OF COMM. DOCKET 694-FEB. 1949

S. R. 930

COLISEUM BLVD. S.

R. 930

LIMITED ACCESS R/W 91-49477

DRIVE

WHITE OAK

CSO POND 3

20

127
128
129
130
131
132
133
134
135
136
137
138
TION
PARK

95
96
97
98
99
84
85
86
87
88
89
90
7
6
5
4
3
2
1
3101
310
316
3132
3212
40
3130
20
21
22
24
25
26
7
6
5
4
3
2
1
310
316
3132
3212
40
3130
20
21
22
24
25
26
7
6
5
4
3
2
1