



PRODUCED BY
CITY OF FORT WAYNE
G.I.S. DEPARTMENT

NOTICE: THE INFORMATION
DEPICTED ON THIS MAP
CONCERNING LOCATION,
TYPE, AND SIZE OF STREET
INFRASTRUCTURE IS NOT
GUARANTEED TO BE
ACCURATE OR ALL
INCLUSIVE. INFORMATION
SHOWN WAS OBTAINED
FROM AVAILABLE RECORDS.
FIELD INVESTIGATION
SHOULD BE CONDUCTED TO
DETERMINE ACCURACY.

CITY OF FORT WAYNE
STREET ENGINEERING
CITIZENS SQUARE
200 EAST BERRY STREET
FORT WAYNE, IN 46802

MAP SCALE : 1" = 200'
(PRINT AT 15" X 18" PAGE SIZE)

0 100 200 300 400

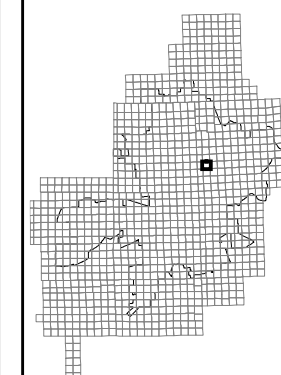


Feet

NE 1/4 SEC. 30

TOWNSHIP 31 N, RANGE 13 E

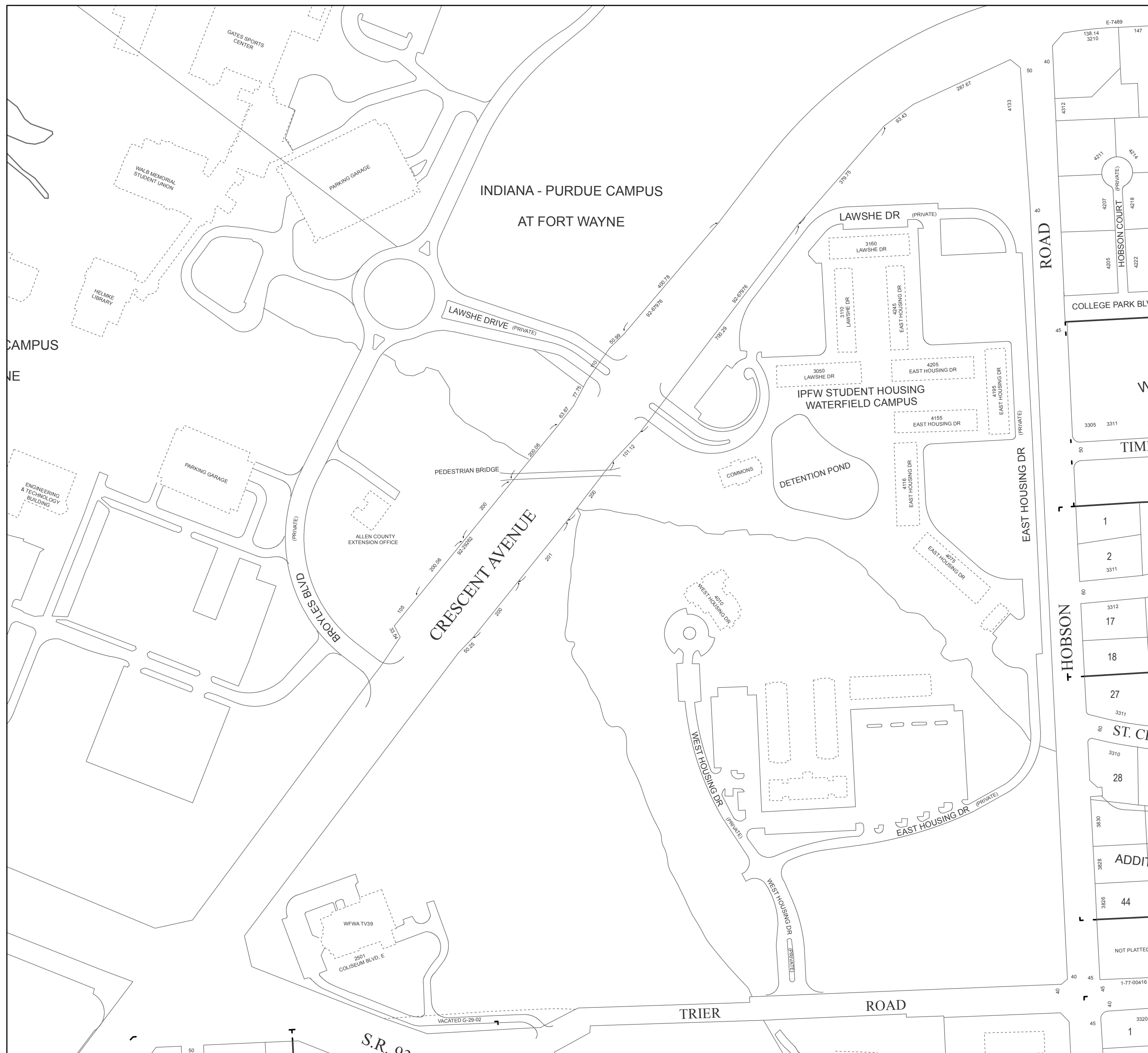
ST JOSEPH TWP, ALLEN CO.



MAP NO.

Q26

12/8/2015



INDIANA - PURDUE CAMPUS
AT FORT WAYNE

IPFW STUDENT HOUSING
WATERFIELD CAMPUS

CRESCENT AVENUE

LAWSHE DR (PRIVATE)

EAST HOUSING DR

WEST HOUSING DR (PRIVATE)

TRIER ROAD

ROAD

HOBSON

ST. CR

ADDITIONAL

NOT PLATTED

1-77-00416

3320

1

E-7489

138,14

3210

147

4312

42-11

42-14

(PRIVATE)

4207

4205

HOBSON COURT

(PRIVATE)

4218

4222

COLLEGE PARK BLVD

45

3305

3311

33

33

TIMBER

33

1

2

3311

3312

17

18

27

3311

28

3310

3830

3828

3826

44

NOT PLATTED

1-77-00416

45

45

45

45

45

45

45

45

45

45

S.R. 92

VACATED G-29-02

PROYLES BLD (PRIVATE)

ALLEN COUNTY
EXTENSION OFFICE

WFVA TV39

2501
COLISEUM BLVD. E

GATES SPORTS
CENTER

WALB MEMORIAL
STUDENT UNION

PARKING GARAGE

HELMKE
LIBRARY

PARKING GARAGE

ENGINEERING
& TECHNOLOGY
BUILDING

PEDESTRIAN BRIDGE

COMMONS

DETENTION POND

WEST HOUSING DR

EAST HOUSING DR (PRIVATE)

WEST HOUSING DR (PRIVATE)

EAST HOUSING DR (PRIVATE)

EAST HOUSING DR (PRIVATE)

EAST HOUSING DR

EAST HOUSING DR

EAST HOUSING DR

EAST HOUSING DR

(PRIVATE)

(PRIVATE)

(PRIVATE)

(PRIVATE)

(PRIVATE)

(PRIVATE)

(PRIVATE)

(PRIVATE)

(PRIVATE)

(PRIVATE)

(PRIVATE)

(PRIVATE)

(PRIVATE)

(PRIVATE)

(PRIVATE)

(PRIVATE)

(PRIVATE)

(PRIVATE)

(PRIVATE)

(PRIVATE)

(PRIVATE)

(PRIVATE)

(PRIVATE)

(PRIVATE)

(PRIVATE)

(PRIVATE)

(PRIVATE)

(PRIVATE)

(PRIVATE)

(PRIVATE)

(PRIVATE)

(PRIVATE)

(PRIVATE)

(PRIVATE)

(PRIVATE)

(PRIVATE)

(PRIVATE)

(PRIVATE)

(PRIVATE)

(PRIVATE)

(PRIVATE)

(PRIVATE)

(PRIVATE)

(PRIVATE)

(PRIVATE)

(PRIVATE)

(PRIVATE)

(PRIVATE)

(PRIVATE)

(PRIVATE)

(PRIVATE)

(PRIVATE)

(PRIVATE)

(PRIVATE)

(PRIVATE)

(PRIVATE)

(PRIVATE)

(PRIVATE)

(PRIVATE)

(PRIVATE)

(PRIVATE)

(PRIVATE)

(PRIVATE)

(PRIVATE)

(PRIVATE)

(PRIVATE)

(PRIVATE)

(PRIVATE)

(PRIVATE)

(PRIVATE)

(PRIVATE)

(PRIVATE)

(PRIVATE)

(PRIVATE)

(PRIVATE)

(PRIVATE)

(PRIVATE)

(PRIVATE)

(PRIVATE)

(PRIVATE)

(PRIVATE)

(PRIVATE)

(PRIVATE)

(PRIVATE)

(PRIVATE)

(PRIVATE)

(PRIVATE)

(PRIVATE)

(PRIVATE)

(PRIVATE)

(PRIVATE)

(PRIVATE)

(PRIVATE)

(PRIVATE)

(PRIVATE)

(PRIVATE)

(PRIVATE)

(PRIVATE)

(PRIVATE)

(PRIVATE)

(PRIVATE)

(PRIVATE)

(PRIVATE)

(PRIVATE)

(PRIVATE)

(PRIVATE)

(PRIVATE)

(PRIVATE)

(PRIVATE)

(PRIVATE)

(PRIVATE)

(PRIVATE)

(PRIVATE)

(PRIVATE)

(PRIVATE)

(PRIVATE)

(PRIVATE)

(PRIVATE)

(PRIVATE)

(PRIVATE)

(PRIVATE)

(PRIVATE)

(PRIVATE)

(PRIVATE)

(PRIVATE)

(PRIVATE)

(PRIVATE)

(PRIVATE)

(PRIVATE)

(PRIVATE)

(PRIVATE)

(PRIVATE)

(PRIVATE)

(PRIVATE)

(PRIVATE)

(PRIVATE)

(PRIVATE)

(PRIVATE)

(PRIVATE)

(PRIVATE)

(PRIVATE)

(PRIVATE)

(PRIVATE)

(PRIVATE)

(PRIVATE)

(PRIVATE)

(PRIVATE)

(PRIVATE)

(PRIVATE)

(PRIVATE)

(PRIVATE)

(PRIVATE)

(PRIVATE)

(PRIVATE)

(PRIVATE)

(PRIVATE)

(PRIVATE)

(PRIVATE)

(PRIVATE)

(PRIVATE)

(PRIVATE)

(PRIVATE)

(PRIVATE)

(PRIVATE)

(PRIVATE)

(PRIVATE)

(PRIVATE)

(PRIVATE)

(PRIVATE)

(PRIVATE)

(PRIVATE)

(PRIVATE)

(PRIVATE)

(PRIVATE)

(PRIVATE)

(PRIVATE)

(PRIVATE)

(PRIVATE)

(PRIVATE)

(PRIVATE)

(PRIVATE)

(PRIVATE)

(PRIVATE)

(PRIVATE)

(PRIVATE)

(PRIVATE)

(PRIVATE)

(PRIVATE)

(PRIVATE)

(PRIVATE)

(PRIVATE)

(PRIVATE)

(PRIVATE)

(PRIVATE)

(PRIVATE)

(PRIVATE)

(PRIVATE)

(PRIVATE)

(PRIVATE)

(PRIVATE)

(PRIVATE)

(PRIVATE)

(PRIVATE)

(PRIVATE)

(PRIVATE)

(PRIVATE)

(PRIVATE)

(PRIVATE)

(PRIVATE)

(PRIVATE)

(PRIVATE)

(PRIVATE)

(PRIVATE)

(PRIVATE)

(PRIVATE)

(PRIVATE)

(PRIVATE)

(PRIVATE)

(PRIVATE)

(PRIVATE)

(PRIVATE)

(PRIVATE)

(PRIVATE)

(PRIVATE)

(PRIVATE)

(PRIVATE)

(PRIVATE)

(PRIVATE)

(PRIVATE)

(PRIVATE)

(PRIVATE)

(PRIVATE)

(PRIVATE)