



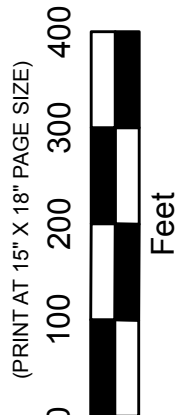
PRODUCED BY  
CITY OF FORT WAYNE  
G.I.S. DEPARTMENT

NOTICE: THE INFORMATION  
DEPICTED ON THIS MAP  
CONCERNING LOCATION,  
TYPE, AND SIZE OF STREET  
INFRASTRUCTURE IS NOT  
GUARANTEED TO BE  
ACCURATE OR ALL  
INCLUSIVE. INFORMATION  
SHOWN WAS OBTAINED  
FROM AVAILABLE RECORDS.  
FIELD INVESTIGATION  
SHOULD BE CONDUCTED TO  
DETERMINE ACCURACY.

# CITY OF FORT WAYNE STREET ENGINEERING

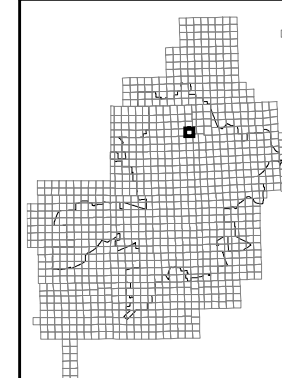
CITIZENS SQUARE  
200 EAST BERRY STREET  
FORT WAYNE, IN 46802

MAP SCALE : 1" = 200'  
(PRINT AT 15" X 18" PAGE SIZE)



SE 1/4 SEC. 12

TOWNSHIP 31 N, RANGE 12 E  
WASHINGTON TWP, ALLEN CO.



MAP NO.

# 046

12/8/2015



EMERALD POINTE  
NOTE: PLAT NOT RECORDED, BASED OFF SURVEY.

169