



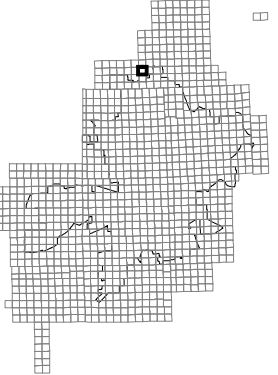
PRODUCED BY  
CITY OF FORT WAYNE  
G.I.S. DEPARTMENT

NOTICE: THE INFORMATION  
DEPICTED ON THIS MAP  
CONCERNING LOCATION,  
TYPE, AND SIZE OF STREET  
INFRASTRUCTURE IS NOT  
GUARANTEED TO BE  
ACCURATE OR ALL  
INCLUSIVE. INFORMATION  
SHOWN WAS OBTAINED  
FROM AVAILABLE RECORDS.  
FIELD INVESTIGATION  
SHOULD BE CONDUCTED TO  
DETERMINE ACCURACY.

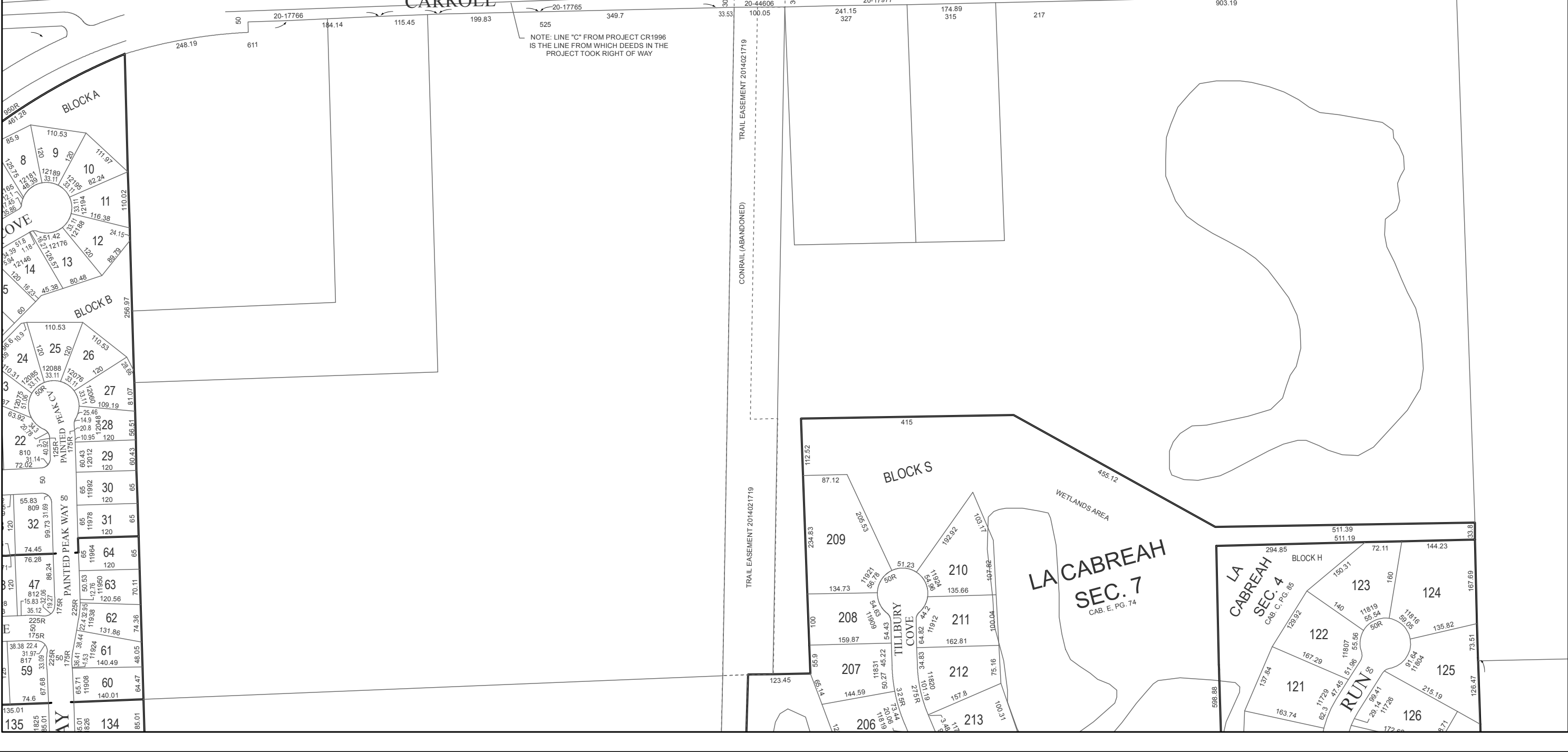
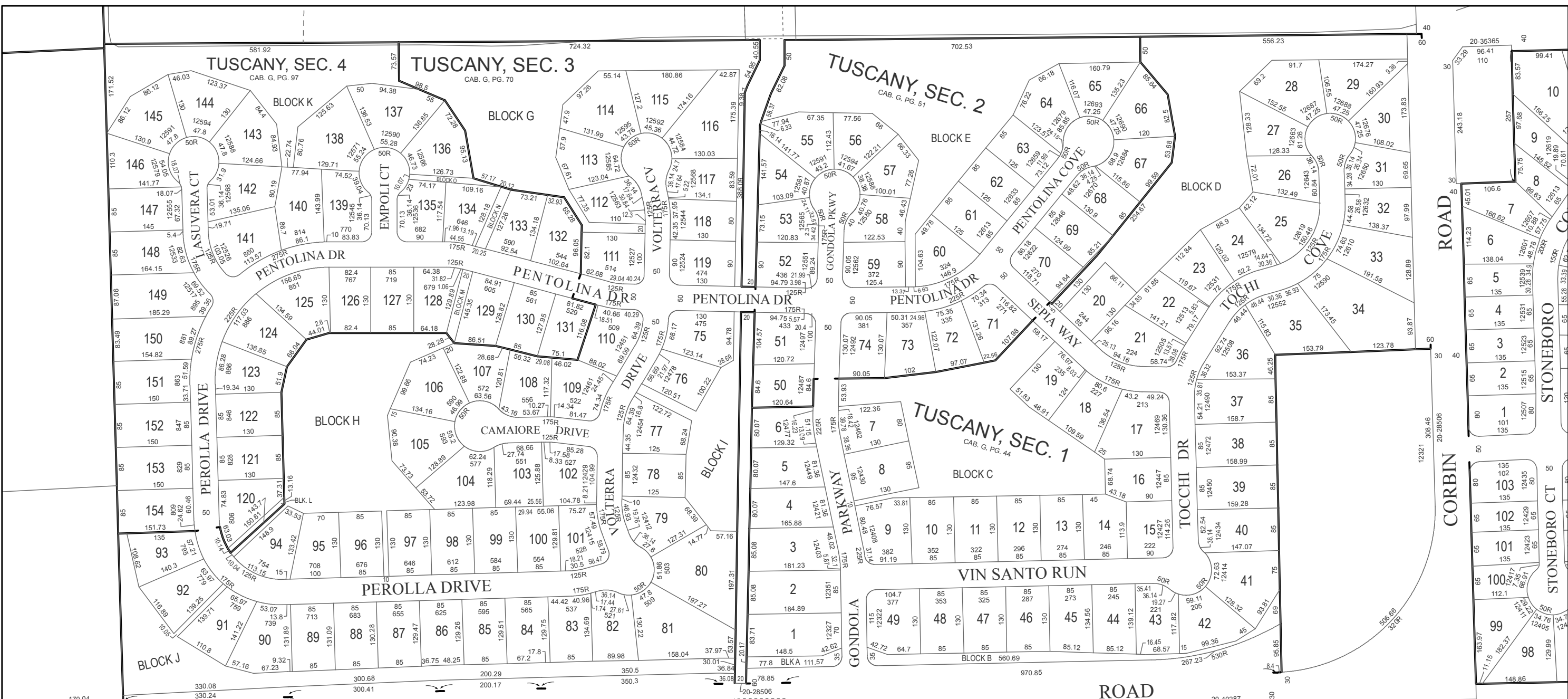
**CITY OF FORT WAYNE**  
**STREET ENGINEERING**  
CITIZENS SQUARE  
200 EAST BERRY STREET  
FORT WAYNE, IN 46802

**MAP SCALE : 1" = 200'**  
(PRINT AT 15" X 18" PAGE SIZE)  
0 100 200 300 400  
  
Feet

SW 1/4 SEC. 28  
TOWNSHIP 32 N, RANGE 12 E  
PERRY TWP, ALLEN CO.



MAP NO.  
**M70**  
12/8/2015



NOTE: LINE "C" FROM PROJECT CR1996  
IS THE LINE FROM WHICH DEEDS IN THE  
PROJECT TOOK RIGHT OF WAY

TRAIL EASEMENT 2014021719  
CONRAIL (ABANDONED)

TRAIL EASEMENT 2014021719

**LACABREAH  
SEC. 7**  
CAB. G. PG. 74

**LACABREAH  
SEC. 4**  
CAB. G. PG. 85