

ST. 72-22272

G-4174 40

1823

DUNKLEBERG RD

RD



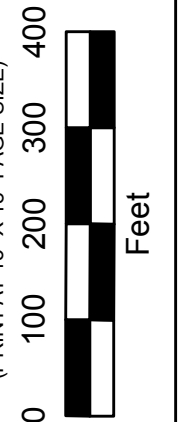
PRODUCED BY
CITY OF FORT WAYNE
G.I.S. DEPARTMENT

NOTICE: THE INFORMATION
DEPICTED ON THIS MAP
CONCERNING LOCATION,
TYPE, AND SIZE OF STREET
INFRASTRUCTURE IS NOT
GUARANTEED TO BE
ACCURATE OR ALL
INCLUSIVE. INFORMATION
SHOWN WAS OBTAINED
FROM AVAILABLE RECORDS.
FIELD INVESTIGATION
SHOULD BE CONDUCTED TO
DETERMINE ACCURACY.

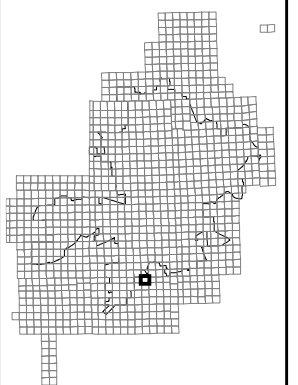
**CITY OF FORT WAYNE
STREET ENGINEERING**

CITIZENS SQUARE
200 EAST BERRY STREET
FORT WAYNE, IN 46802

MAP SCALE : 1" = 200'
(PRINT AT 15" X 18" PAGE SIZE)



NE 1/4 SEC. 3
TOWNSHIP 29 N, RANGE 12 E
PLEASANT TWP, ALLEN CO.



MAP NO.
K39

12/8/2015