

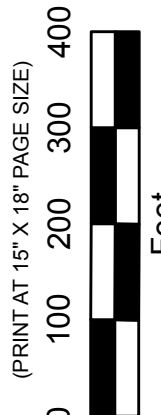


PRODUCED BY  
CITY OF FORT WAYNE  
G.I.S. DEPARTMENT

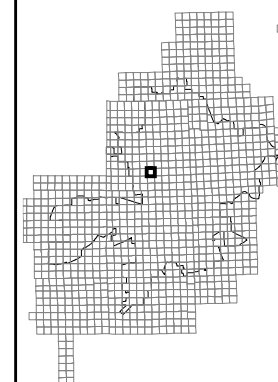
NOTICE: THE INFORMATION  
DEPICTED ON THIS MAP  
CONCERNING LOCATION,  
TYPE, AND SIZE OF STREET  
INFRASTRUCTURE IS NOT  
GUARANTEED TO BE  
ACCURATE OR ALL  
INCLUSIVE. INFORMATION  
SHOWN WAS OBTAINED  
FROM AVAILABLE RECORDS.  
FIELD INVESTIGATION  
SHOULD BE CONDUCTED TO  
DETERMINE ACCURACY.

**CITY OF FORT WAYNE**  
**STREET ENGINEERING**  
CITIZENS SQUARE  
200 EAST BERRY STREET  
FORT WAYNE, IN 46802

**MAP SCALE : 1" = 200'**  
(PRINT AT 15" X 18" PAGE SIZE)



SW 1/4 SEC. 27  
TOWNSHIP 31 N, RANGE 12 E  
WASHINGTON TWP, ALLEN CO.



MAP NO.  
**J22**

12/8/2015



OLYMPIA HEIGHTS							
1	2	3	4	5	6	7	8
2028	2020	2012	2006	1928	1918	1906	1826
LOT 1 PART OF LOT 1 PART OF OLYMPIA HEIGHTS ADD. NOT VACATED							
OLYMPIA COURT							
16	15	14	13	12	11	10	9
2029 2027	2021 2019	2015 2011	2007 2005	1929 1927	1921 1919	1911 1909	1827 1823
AMENDED CAB. A, PG. 2							