

PRODUCED BY  
CITY OF FORT WAYNE  
G.I.S. DEPARTMENT

NOTICE: THE INFORMATION DEPICTED ON THIS MAP CONCERNING LOCATION, TYPE, AND SIZE OF STREET INFRASTRUCTURE IS NOT GUARANTEED TO BE ACCURATE OR ALL INCLUSIVE. INFORMATION SHOWN WAS OBTAINED FROM AVAILABLE RECORDS. FIELD INVESTIGATION SHOULD BE CONDUCTED TO DETERMINE ACCURACY.

**CITY OF FORT WAYNE**  
**STREET ENGINEERING**  
CITIZENS SQUARE  
200 EAST BERRY STREET  
FORT WAYNE, IN 46802

ELSINOR

11507	1
11531	2
11531	3
11531	4
11605	5
2325	6
11721	22

**BROOKFIELD**

GLAMI

S. R. 1

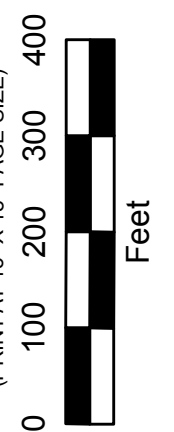
ROAD

BLUFFTON

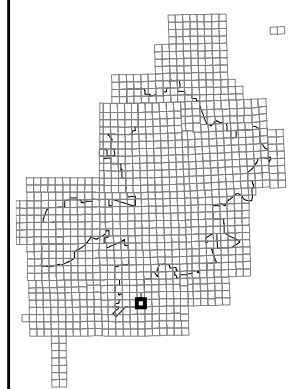
WINTERS

ROAD

MAP SCALE : 1" = 200'  
(PRINT AT 15" X 18" PAGE SIZE)



SE 1/4 SEC. 9  
TOWNSHIP 29 N, RANGE 12 E  
PLEASANT TWP, ALLEN CO.



MAP NO.

**I51**

12/8/2015