



PRODUCED BY
CITY OF FORT WAYNE
G.I.S. DEPARTMENT

NOTICE: THE INFORMATION
DEPICTED ON THIS MAP
CONCERNING LOCATION,
TYPE, AND SIZE OF STREET
INFRASTRUCTURE IS NOT
GUARANTEED TO BE
ACCURATE OR ALL
INCLUSIVE. INFORMATION
SHOWN WAS OBTAINED
FROM AVAILABLE RECORDS.
FIELD INVESTIGATION
SHOULD BE CONDUCTED TO
DETERMINE ACCURACY.

CITY OF FORT WAYNE
STREET ENGINEERING

CITIZENS SQUARE
200 EAST BERRY STREET
FORT WAYNE, IN 46802

MAP SCALE : 1" = 200'
(PRINT AT 15" X 18" PAGE SIZE)

0 100 200 300 400

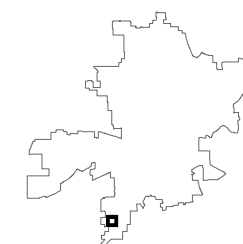


Feet

SE 1/4 SEC. 5

TOWNSHIP 29 N, RANGE 12 E

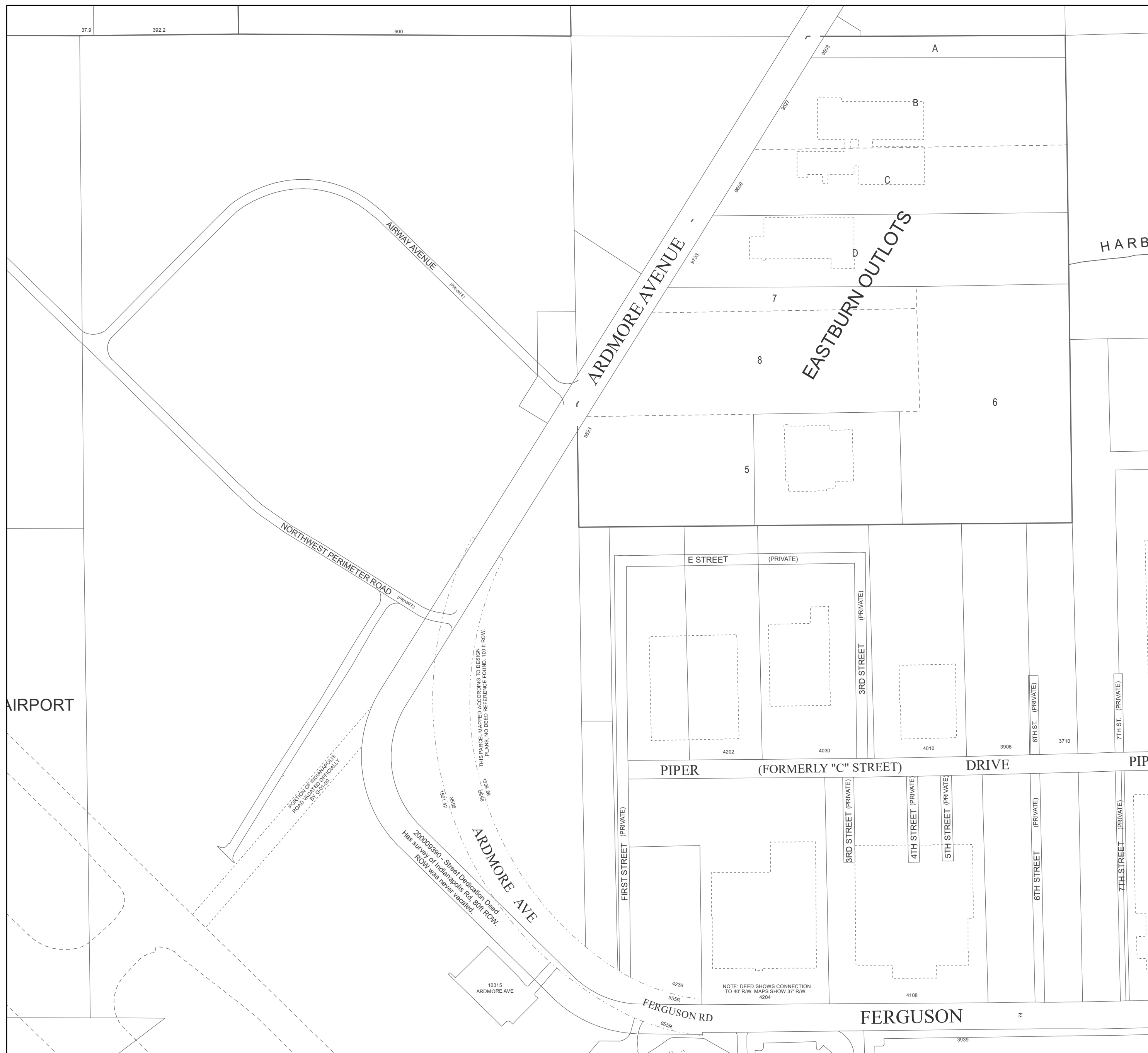
PLEASANT TWP, ALLEN CO.



MAP NO.

G43

7/31/2017



AIRPORT

HARBOR

EASTBURN OUTLOTS

PIPER (FORMERLY "C" STREET) DRIVE

FERGUSON

AIRWAY AVENUE (PRIVATE)

ARDMORE AVENUE

NORTHWEST PERIMETER ROAD (PRIVATE)

ARDMORE AVE

FERGUSON RD

E STREET (PRIVATE)

3RD STREET (PRIVATE)

3RD STREET (PRIVATE)

4TH STREET (PRIVATE)

5TH STREET (PRIVATE)

6TH ST. (PRIVATE)

6TH STREET (PRIVATE)

7TH ST. (PRIVATE)

7TH STREET (PRIVATE)

10315 ARDMORE AVE

4236

555R

4204

4108

74

3939

THIS PARCEL MAPPED ACCORDING TO DESIGN PLANS. NO DEED REFERENCE FOUND. 100' R/W.

PORTION OF INDIANAPOLIS ROAD VACATED, OFFICIALLY BY C.C. 1-58

200009380 - Street Dedication Deed
Has survey of Indianapolis Rd. 80ft R/W.
R/W was never vacated.

NOTE: DEED SHOWS CONNECTION TO 40' R/W. MAPS SHOW 37' R/W.

37.9

392.2

900

9803

A

B

C

7

8

6

5

9823

4202

4030

4010

3906

3710

FIRST STREET (PRIVATE)

655R