



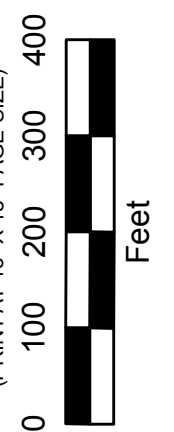
PRODUCED BY
CITY OF FORT WAYNE
G.I.S. DEPARTMENT

NOTICE: THE INFORMATION
DEPICTED ON THIS MAP
CONCERNING LOCATION,
TYPE, AND SIZE OF STREET
INFRASTRUCTURE IS NOT
GUARANTEED TO BE
ACCURATE OR ALL
INCLUSIVE. INFORMATION
SHOWN WAS OBTAINED
FROM AVAILABLE RECORDS.
FIELD INVESTIGATION
SHOULD BE CONDUCTED TO
DETERMINE ACCURACY.

CITY OF FORT WAYNE
STREET ENGINEERING

CITIZENS SQUARE
200 EAST BERRY STREET
FORT WAYNE, IN 46802

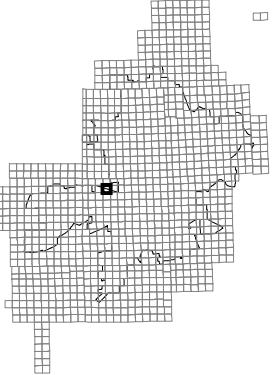
MAP SCALE : 1" = 200'
(PRINT AT 15" X 18" PAGE SIZE)



SE 1/4 SEC. 5

TOWNSHIP 30 N, RANGE 12 E

WAYNE TWP, ALLEN CO.



MAP NO.

G06

12/8/2015



PAVEMENT EDGES FROM PLANS R-23629