



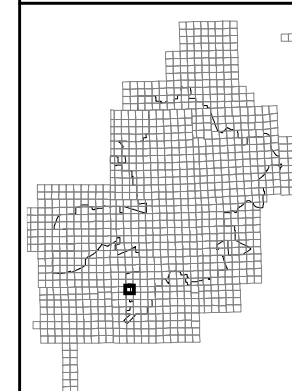
PRODUCED BY
CITY OF FORT WAYNE
G.I.S. DEPARTMENT

NOTICE: THE INFORMATION
DEPICTED ON THIS MAP
CONCERNING LOCATION,
TYPE, AND SIZE OF STREET
INFRASTRUCTURE IS NOT
GUARANTEED TO BE
ACCURATE OR ALL
INCLUSIVE. INFORMATION
SHOWN WAS OBTAINED
FROM AVAILABLE RECORDS.
FIELD INVESTIGATION
SHOULD BE CONDUCTED TO
DETERMINE ACCURACY.

CITY OF FORT WAYNE
STREET ENGINEERING
CITIZENS SQUARE
200 EAST BERRY STREET
FORT WAYNE, IN 46802

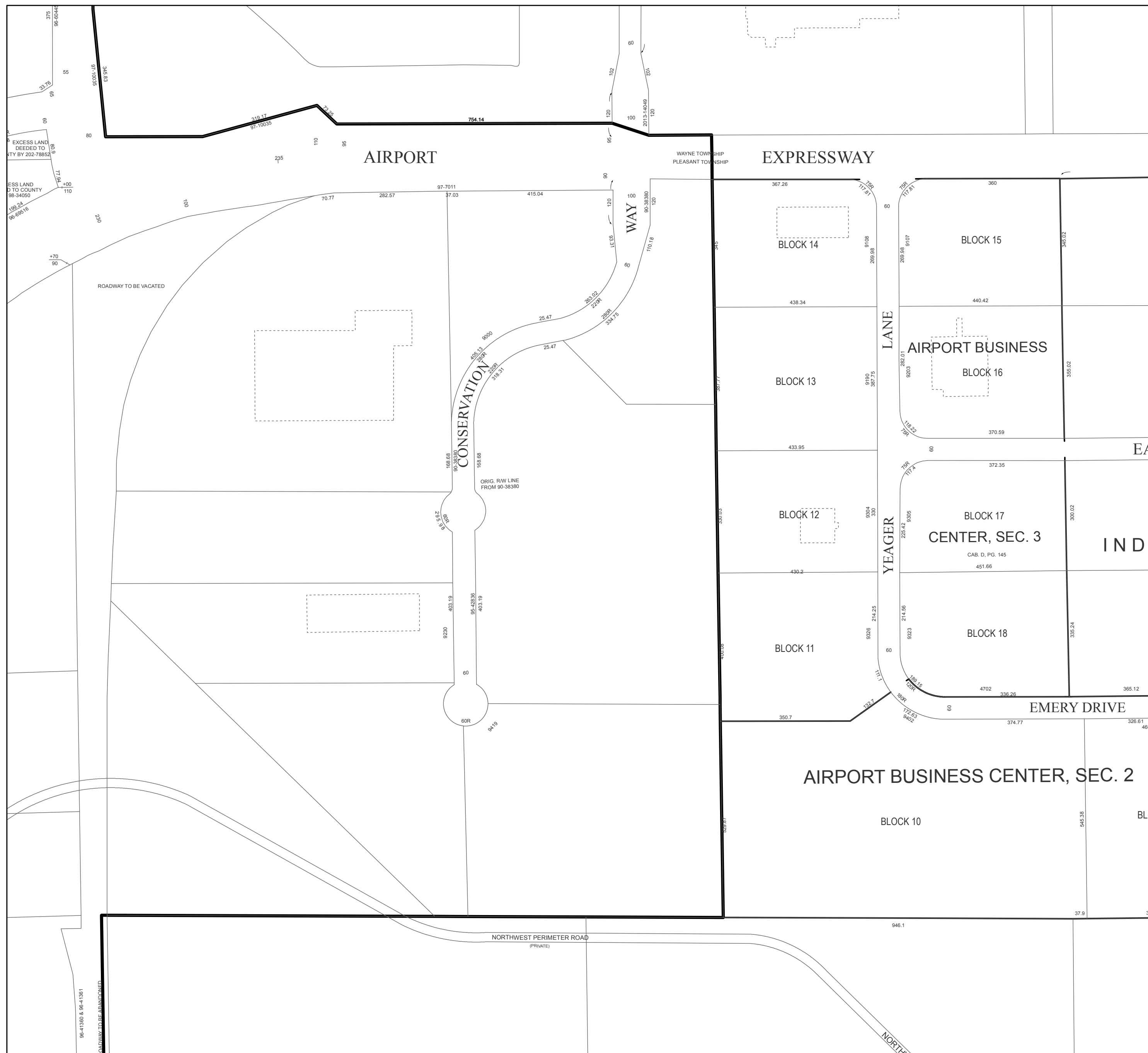


NW 1/4 SEC. 5
TOWNSHIP 29 N, RANGE 12 E
PLEASANT TWP, ALLEN CO.



MAP NO.
F39

12/8/2015



EXCESS LAND
DEDICATED TO
CITY BY 202-78852

EXCESS LAND
DEDICATED TO
COUNTY
98-34050
199-24
96-69516

ROADWAY TO BE VACATED

CONSERVATION
WAY

ORIG. R/W LINE
FROM 90-38380

WAYNE TOWNSHIP
PLEASANT TOWNSHIP

EXPRESSWAY

LANE

YEAGER

EMERY DRIVE

NORTHWEST PERIMETER ROAD
(PRIVATE)

NORTH

AIRPORT

BLOCK 14

BLOCK 15

BLOCK 13

AIRPORT BUSINESS
BLOCK 16

BLOCK 12

BLOCK 17
CENTER, SEC. 3
CAB. D. PG. 145

BLOCK 11

BLOCK 18

AIRPORT BUSINESS CENTER, SEC. 2
BLOCK 10

96-41360 & 96-41361
ROADWAY TO BE ABANDONED