



PRODUCED BY
CITY OF FORT WAYNE
G.I.S. DEPARTMENT

LEGEND

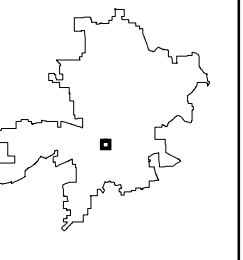
- SEWER / COMBO MANHOLE
- STORM MANHOLE
- ⊙ RETIRED MANHOLE
- CATCH BASIN
- △ INLET
- CLEANOUT
- ⊕ DISCHARGE
- ⊗ GATE VALVE
- ⊘ HEADWALL
- ⊙ HEADWALL w/FLAPGATE
- ⊖ BULKHEAD / PLUG
- ⊞ PUMP STATION
- ⊠ REGULATOR
- ⊙ VALVE PIT
- ⊕ AIR RELEASE VALVE
- ⊖ DUCKBILL FLAPGATE

- SANITARY PIPE
- STORM PIPE
- COMBINED PIPE
- PRESSURIZED MAIN
- PRIVATE MAIN
- RETIRED MAIN
- R22 176 STRUCTURE ID
- 12345 PROJECT ID

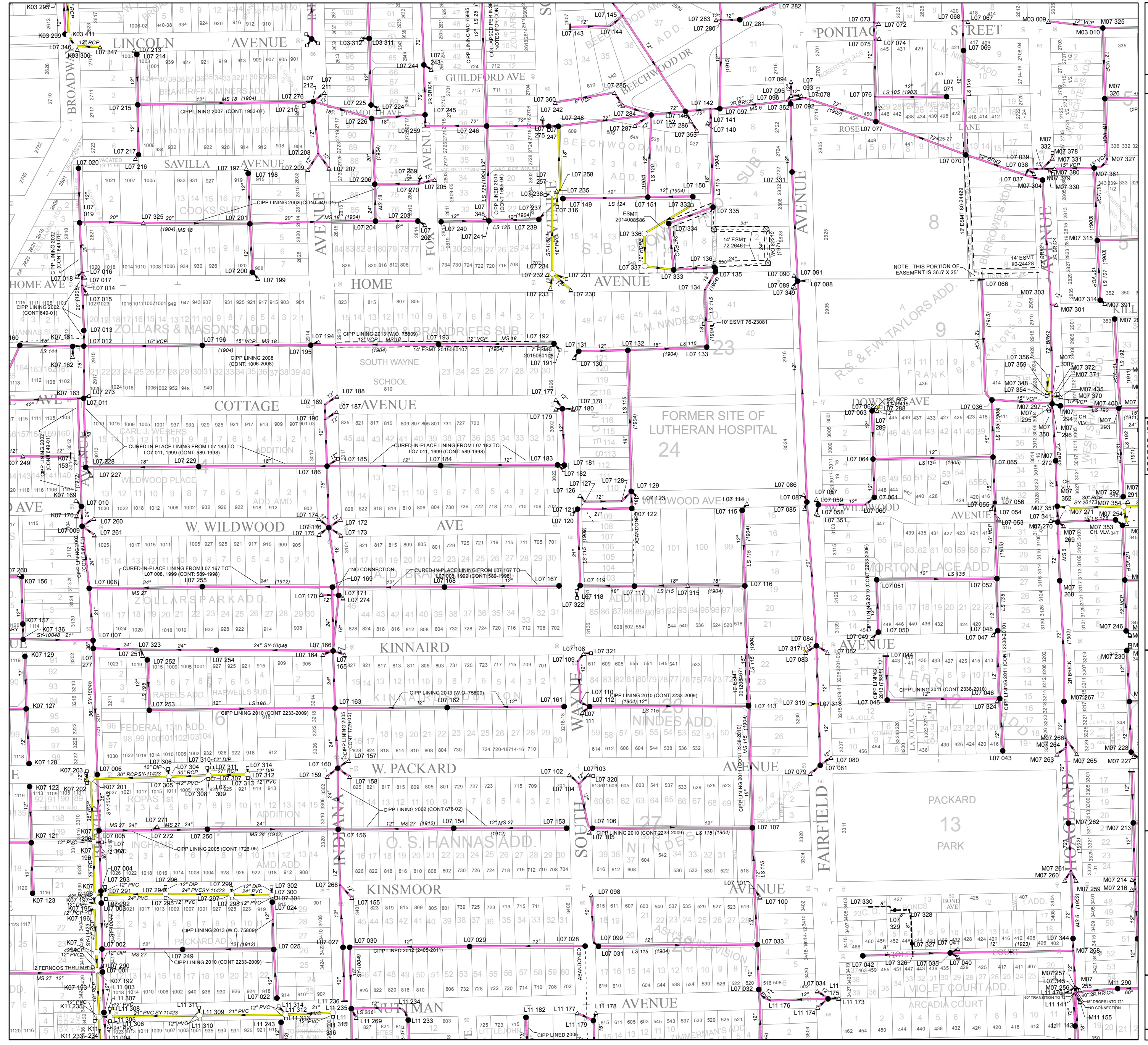
NOTE: THE INFORMATION DEPICTED ON THIS MAP CONCERNING LOCATION, TYPE, SIZE AND MATERIAL OF UNDERGROUND UTILITIES IS NOT GUARANTEED TO BE ACCURATE OR ALL INCLUSIVE. INFORMATION SHOWN WAS OBTAINED FROM AVAILABLE RECORDS. FIELD INVESTIGATION SHOULD BE CONDUCTED TO DETERMINE ACCURACY.

CITY OF FORT WAYNE
CITY UTILITIES
CITIZENS SQUARE
200 E. BERRY STREET
FORT WAYNE, IN 46802

NW 1/4 SEC. 14
TOWNSHIP 30 N, RANGE 12 E
WAYNE TWP, ALLEN CO.
MAP SCALE : 1" = 200'



MAP NO.
L07
1/3/2019



NOTE: THIS PORTION OF EASEMENT IS 36.5' X 25'

CURED-IN-PLACE LINING FROM L07 183 TO L07 011, 1999 (CONT. 589-1998)

CURED-IN-PLACE LINING FROM L07 167 TO L07 008, 1999 (CONT. 589-1998)

CURED-IN-PLACE LINING FROM L07 167 TO L07 008, 1999 (CONT. 589-1998)

CURED-IN-PLACE LINING FROM L07 167 TO L07 008, 1999 (CONT. 589-1998)

CURED-IN-PLACE LINING FROM L07 167 TO L07 008, 1999 (CONT. 589-1998)

CURED-IN-PLACE LINING FROM L07 167 TO L07 008, 1999 (CONT. 589-1998)