



PRODUCED BY
CITY OF FORT WAYNE
G.I.S. DEPARTMENT

LEGEND

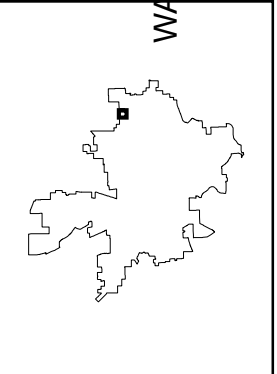
- SEWER / COMBO MANHOLE
- STORM MANHOLE
- ⊗ RETIRED MANHOLE
- CATCH BASIN
- △ INLET
- CLEANOUT
- ⊕ DISCHARGE
- ⊠ GATE VALVE
- ⌒ HEADWALL
- ⌒ HEADWALL w/FLAPGATE
- ⊥ BULKHEAD / PLUG
- ⊠ PUMP STATION
- ⊠ REGULATOR
- ⊕ VALVE PIT
- ⊕ AIR RELEASE VALVE
- ▼ DUCKBILL FLAPGATE

- SANITARY PIPE
- STORM PIPE
- COMBINED PIPE
- PRESSURIZED MAIN
- - - PRIVATE MAIN
- - - RETIRED MAIN
- R22 176 STRUCTURE ID
- 12345 PROJECT ID

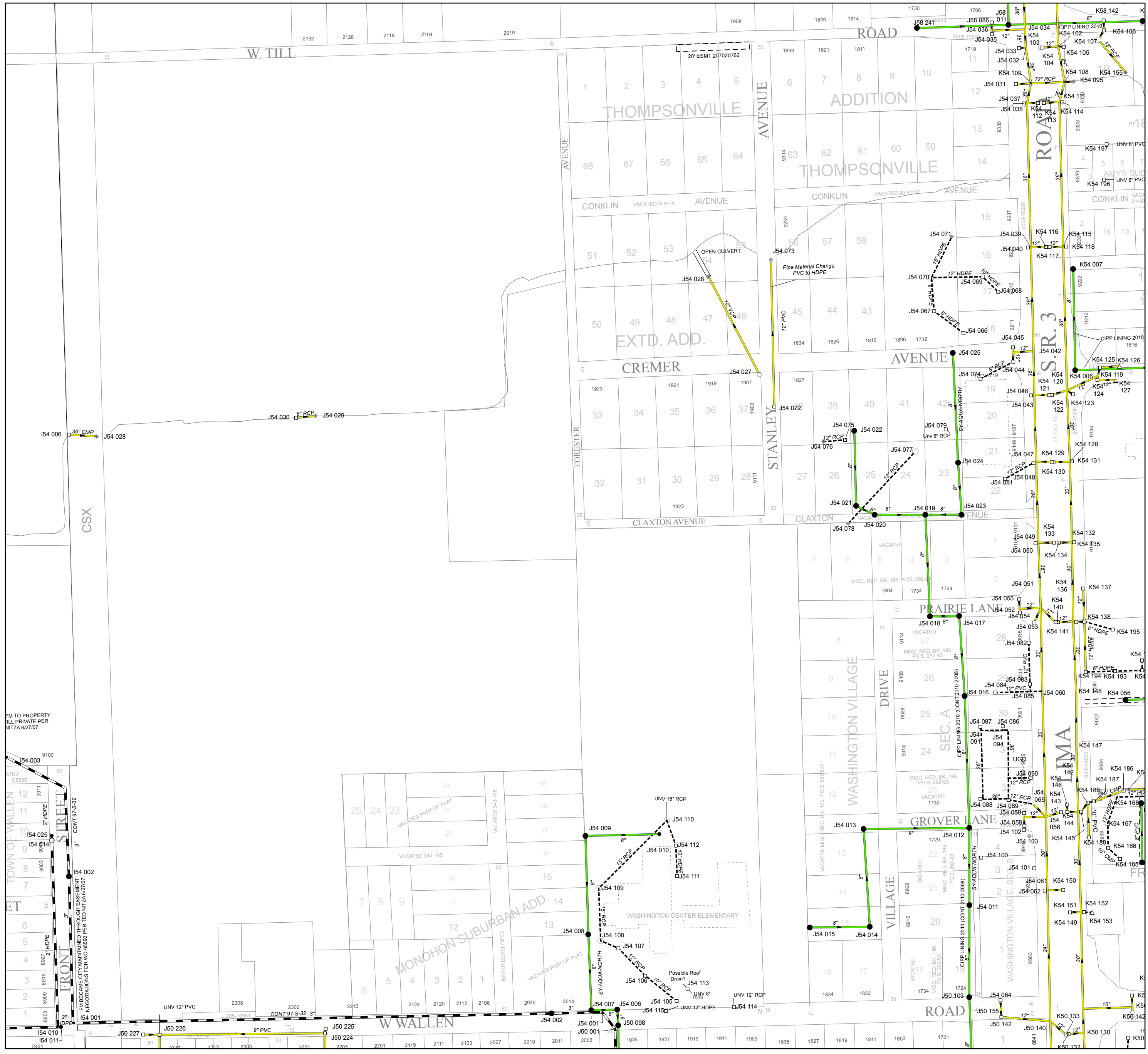
NOTICE: THE INFORMATION DEPICTED ON THIS MAP CONCERNING LOCATION, TYPE, SIZE AND MATERIAL OF UNDERGROUND UTILITIES IS NOT GUARANTEED TO BE ACCURATE OR ALL INCLUSIVE. INFORMATION SHOWN WAS OBTAINED FROM AVAILABLE RECORDS. FIELD INVESTIGATION SHOULD BE CONDUCTED TO DETERMINE ACCURACY.

CITY OF FORT WAYNE
CITY UTILITIES
 CITIZENS SQUARE
 200 E. BERRY STREET
 FORT WAYNE, IN 46802

SW 1/4 SEC. 3
TOWNSHIP 31 N, RANGE 12 E
WASHINGTON TWP, ALLEN CO.
MAP SCALE : 1" = 200'



MAP NO.
J54
 10/12/2018



TO PROPERTY
TILL PRIVATE PER
NITZA 6/27/07.

EM BECAME CITY MAINTAINED THROUGH EASEMENT
NEGOTIATIONS FOR WO 85590 PER TED NITZA 6/27/07

MONOHON SUBURBAN ADD. 14

W WALLEN