

WASHINGTON CENTER

ROAD

WASH



PRODUCED BY
CITY OF FORT WAYNE
G.I.S. DEPARTMENT

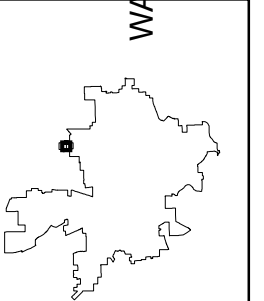
LEGEND

- SEWER / COMBO MANHOLE
- STORM MANHOLE
- ⊗ RETIRED MANHOLE
- △ CATCH BASIN
- INLET
- CLEANOUT
- ⊕ DISCHARGE
- ⊠ GATE VALVE
- ⌒ HEADWALL
- ⌒ HEADWALL w/FLAPGATE
- ⊥ BULKHEAD / PLUG
- ⊠ PUMP STATION
- ⊠ REGULATOR
- ⊕ VALVE PIT
- ⊕ AIR RELEASE VALVE
- ▼ DUCKBILL FLAPGATE
- SANITARY PIPE
- STORM PIPE
- COMBINED PIPE
- PRESSURIZED MAIN
- PRIVATE MAIN
- RETIRED MAIN
- R22 176 STRUCTURE ID
- 12345 PROJECT ID

NOTICE: THE INFORMATION DEPICTED ON THIS MAP CONCERNING LOCATION, TYPE, SIZE AND MATERIAL OF UNDERGROUND UTILITIES IS NOT GUARANTEED TO BE ACCURATE OR ALL INCLUSIVE. INFORMATION SHOWN WAS OBTAINED FROM AVAILABLE RECORDS. FIELD INVESTIGATION SHOULD BE CONDUCTED TO DETERMINE ACCURACY.

CITY OF FORT WAYNE
CITY UTILITIES
CITIZENS SQUARE
200 E. BERRY STREET
FORT WAYNE, IN 46802

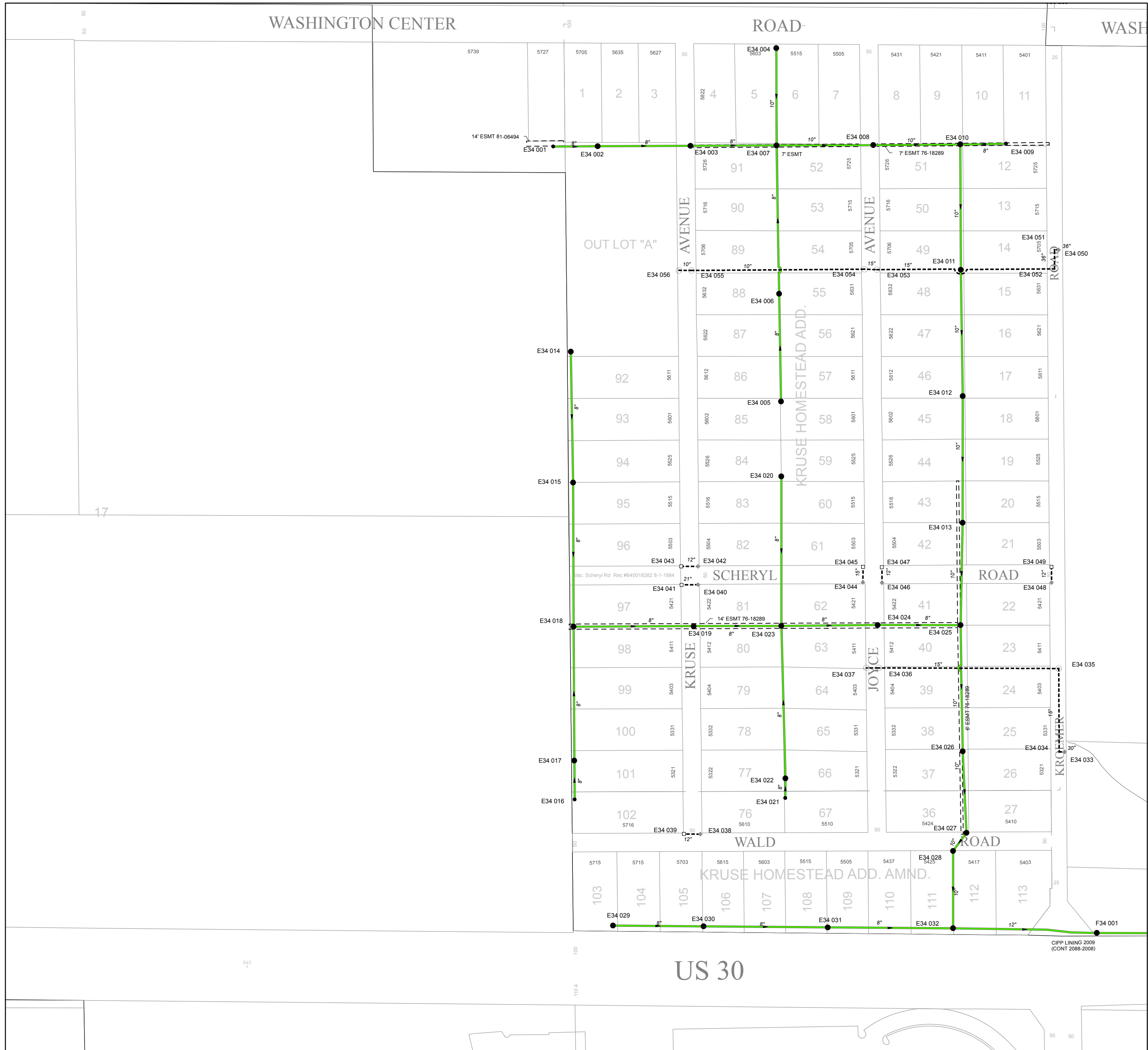
NE 1/4 SEC. 19
TOWNSHIP 31 N, RANGE 12 E
WASHINGTON TWP, ALLEN CO.
MAP SCALE : 1" = 200'



MAP NO.

E34

10/12/2018



CIPP LINING 2009
(CONT 2088-2008)

US 30